

Instrument #: 2022-1877  
 10/14/2022 03:34:21 PM Total Pages: 2  
 SCC SECTION CORNER CERTIFICATES  
 Recording Fee: \$ 12.00  
 Shirley Treyna, Recorder, Chickasaw County Iowa

Prepared by: Kyle A. Johnson Address: 1900 MEDICAL ARTS AVE S. SUITE 100 SARTELL, MN Phone: 1-888-937-5150

UNITED STATES PUBLIC LAND SURVEY CORNER CERTIFICATE FOR

Land survey monuments situated in Section 21, Township 96 NORTH  
12 WEST, of the Fifth Principal Meridian, CHICKASAW County, Iowa.  
 Previously Recorded in \_\_\_\_\_ in County Recorder's Office.

(Show reason for preparing this certificate, the evidence and detailed procedures used in establishing the corner positions and monumentation found or placed.)

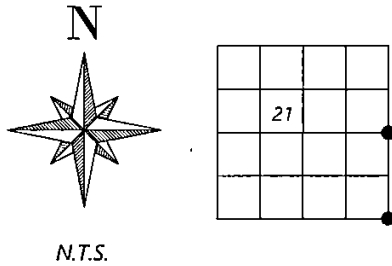
MONUMENT DESCRIPTION AND REMARKS:

**SOUTHEAST CORNER:** Westwood Professional Services found a 1/2" rebar flush. Distances agree with 1992 survey. Accepting corner location. Filing corner record as there is no certificate on file for this corner.

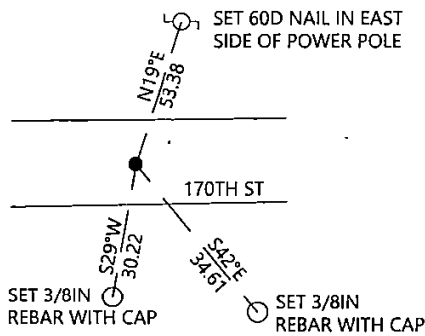
**EAST QUARTER:** Westwood Professional Services searched and found a 9x7x7 stone laying on top of the ground, on the south side of the existing N/E fence corner. Also found a smaller field stone north of the N/E fence line corner. The fence line to the East jog's south 33 feet then continues east, approximately a quarter mile east of N/E corner post. The EQ of Section 22 agrees with the southerly East fence. Existing fence line to the west meanders slightly, making a straight occupation line unreliable. Fence line to the North agrees within reason with a straight line between the SE and NE corners of Section 21. Set a 1/2" rebar with orange cap LS25725 at the intersection of fences extended from the North and the East fence line, approximately a quarter mile east. The extension of the best fit fence line from the west lands +/- 3 feet south of this position.

PLAN - VIEW

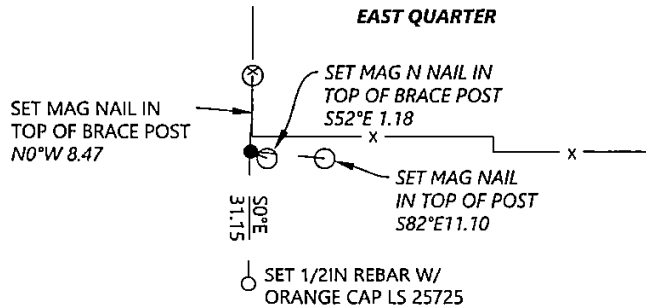
(Show a minimum of three reference ties to durable physical objects, relevant monuments and physical conditions that will enable recovery of the corner.)



SOUTHEAST CORNER



EAST QUARTER



Cor. B 21-96-12



I hereby certify that this land surveying document was prepared and the related survey work was performed by me or under my direct personal supervision and that I am a duly licensed Land Surveyor under the laws of the state of Iowa.

Kyle Johnson 10/4/2022  
 Signature Date

Typed/Printed Name: Kyle A. Johnson

License Number: 25725

My license renewal date is December 31, 2022

Pages or sheets covered by this seal: THIS SHEET

Corners to be Indexed

Corners	Section	Twp.	Range
SE	21	96	12
EQ	21	96	12

Prepared by: Kyle A. Johnson Address: 1900 MEDICAL ARTS AVE S, SUITE 100 SARTELL, MN Phone: 1-888-937-5150

UNITED STATES PUBLIC LAND SURVEY CORNER CERTIFICATE FOR

Land survey monuments situated in Section 21, Township 96 NORTH  
12 WEST, of the Fifth Principal Meridian, CHICKASAW County, Iowa.  
 Previously Recorded in \_\_\_\_\_ in County Recorder's Office.

(Show reason for preparing this certificate, the evidence and detailed procedures used in establishing the corner positions and monumentation found or placed.)

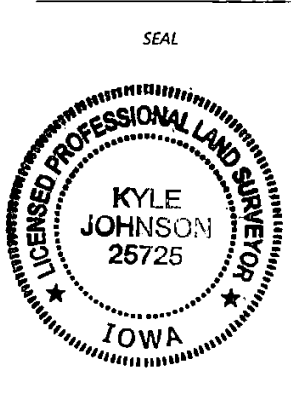
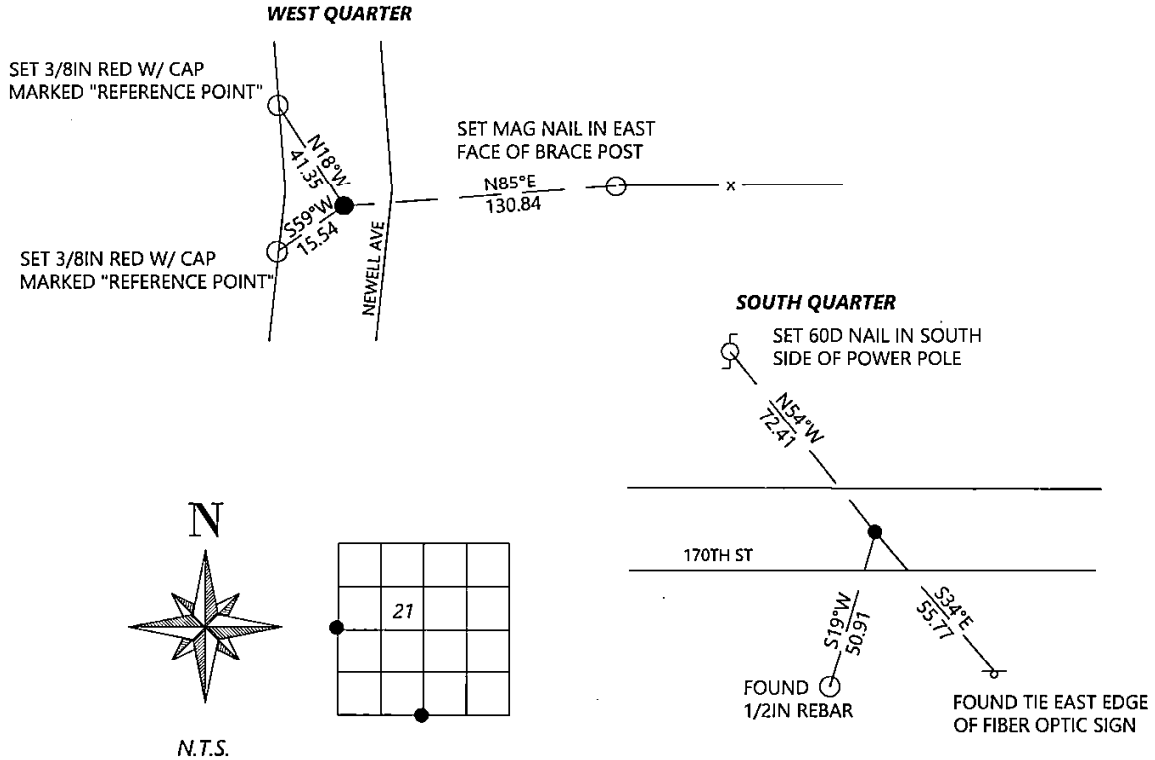
MONUMENT DESCRIPTION AND REMARKS:

**SOUTH QUARTER:** Westwood Professional Services found a 1/2" rebar with illegible cap 0.3' deep and 2 ties from 1992 record. Accepting corner location and set 1 tie. Filing corner record as there are no longer three valid ties of record.

**WEST QUARTER:** Westwood Professional Services searched the area and found nothing. Dug near Chickasaw County engineering record distance-distance intersection and at occupation intersection for possible stone, but did not recover anything. The N/S gravel road in this area has an extreme kink eastward from a starlight line from the NE and SE corners of Section 20. There are distances from the Chickasaw County engineering records that put the corner position in the general vicinity of this area, but are not consistent with each other. When locating a fence that runs E/W through Section 20 and a fence that runs E/W through Section 21, the extension of these two fences intersect each other on the gravel road centerline. These three lines of occupation were used as the best available evidence of the corner position and agree with record distance vicinity. Set a 1/2" rebar with orange LS 25725 cap at the corner location. Filing record due to no monument found.

PLAN - VIEW

(Show a minimum of three reference ties to durable physical objects, relevant monuments and physical conditions that will enable recovery of the corner.)



I hereby certify that this land surveying document was prepared and the related survey work was performed by me or under my direct personal supervision and that I am a duly licensed Land Surveyor under the laws of the state of Iowa.

Signature: Kyle A. Johnson Date: 10/14/2022  
 Typed/Printed Name: Kyle A. Johnson  
 License Number: 25725  
 My license renewal date is December 31, 2022  
 Pages or sheets covered by this seal: THIS SHEET

Corners to be Indexed

Corners	Section	Twp.	Range
WQ	21	96	12
SQ	21	96	12