

FILED 2001-1452
 RECORDER'S OFFICE
 CHICKASAW COUNTY, IOWA
fee \$6.00
 2001 JUL 16 AM 9 47

CINDY MESSERSMITH
 COUNTY RECORDER

TeKIPPE ENGINEERING, P.C., 128 South Vine Street, West Union, Iowa 52175 Phone (563) 422-5131

UNITED STATES PUBLIC LAND SURVEY CORNER CERTIFICATE

OF

Land Survey Monuments situated in Section 22, Township 96 North, Range 12 West of the Fifth Principal Meridian, CHICKASAW County, Iowa.
 Previously recorded in none in County Recorder's Office.
(book, page, document number, etc.)

(Show reason for preparing this certificate, the evidence and detailed procedures used in establishing the corner positions and monumentation found or placed.)

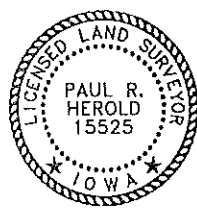
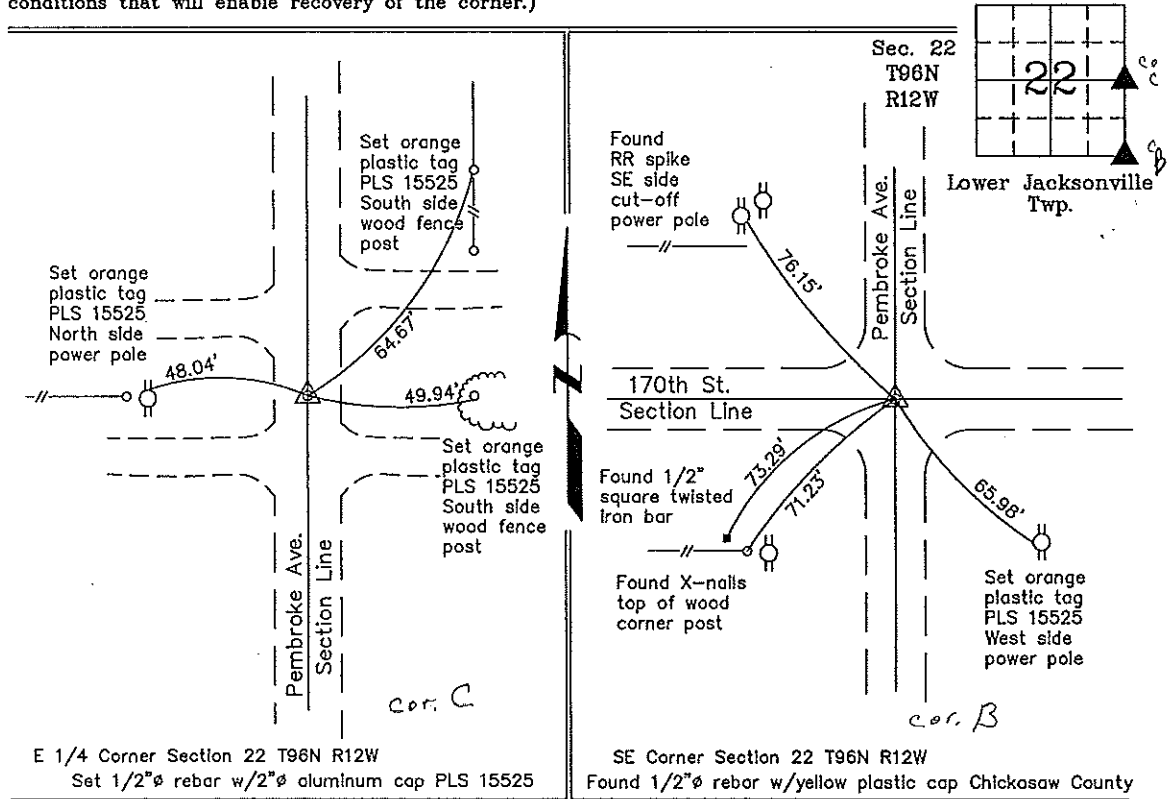
Monument Description and Remarks: E 1/4 Corner Section 22 T96N R12W: Set 1/2"Ø rebar w/2"Ø aluminum cap PLS 15525 on the split of the R.O.W. at the 1/4 Section Line fence as indicated in the Chickasaw County Engineer's Office in the Field Book for Lower Jacksonville Twp., Section 22, Corner C.

SE Corner Section 22 T96N R12W: Found 1/2"Ø rebar w/yellow plastic cap Chickasaw County with information obtained from the Chickasaw County Engineer's Office in the Field Book for Lower Jacksonville Twp., Section 22, Corner B.

PLAN - VIEW

Project Number 01111.15
 FR 46H PG. 65-66

(Show a minimum of three reference ties to durable physical objects, relevant monuments and physical conditions that will enable recovery of the corner.)



I hereby certify that this land surveying document was prepared and the related survey work was performed by me or under my direct personal supervision and that I am a duly licensed Land Surveyor under the laws of the State of Iowa.
Paul R. Herold 7-13-01
 Paul R. Herold Date
 License number 15525
 My license renewal date is December 31, 2002.
 Sheets covered by this seal: Individual

List Corners to be Indexed			
Corners	Section	Twp.	Range
E 1/4	22	96N	12W
SE	22	96N	12W

Entered 1-16-02

County Engineers Copy