

Chickasaw Co. Recorder
 Cindy Messersmith
Fee Book 2013-1965
 12/02/2013 @11:29AM
 SCC SEC COR CERT # Pages: 1
 Book: Page: Total Fees: \$7.00

Prepared by & Return to: Herold - Reicks Surveying, 10 East Main Street, New Hampton, IA 50659, Ph. 641-394-2725

UNITED STATES PUBLIC LAND SURVEY CORNER CERTIFICATE

Land Survey Monuments situated in Section ²²23, Township 96 North, Range 12 West of the Fifth Principal Meridian, Chickasaw County, Iowa. 1., 2.) Not previously recorded in the County Recorder's office.

This certificate is being prepared in compliance with Iowa Code Chapter 355.11 because:

- 1 & 2 There is no certificate on file for this corner.
- There are no longer three valid ties of record.
- There are changes to reference ties of record.
- There is change of monumentation of record.
- To clarify description of record monument (ties).

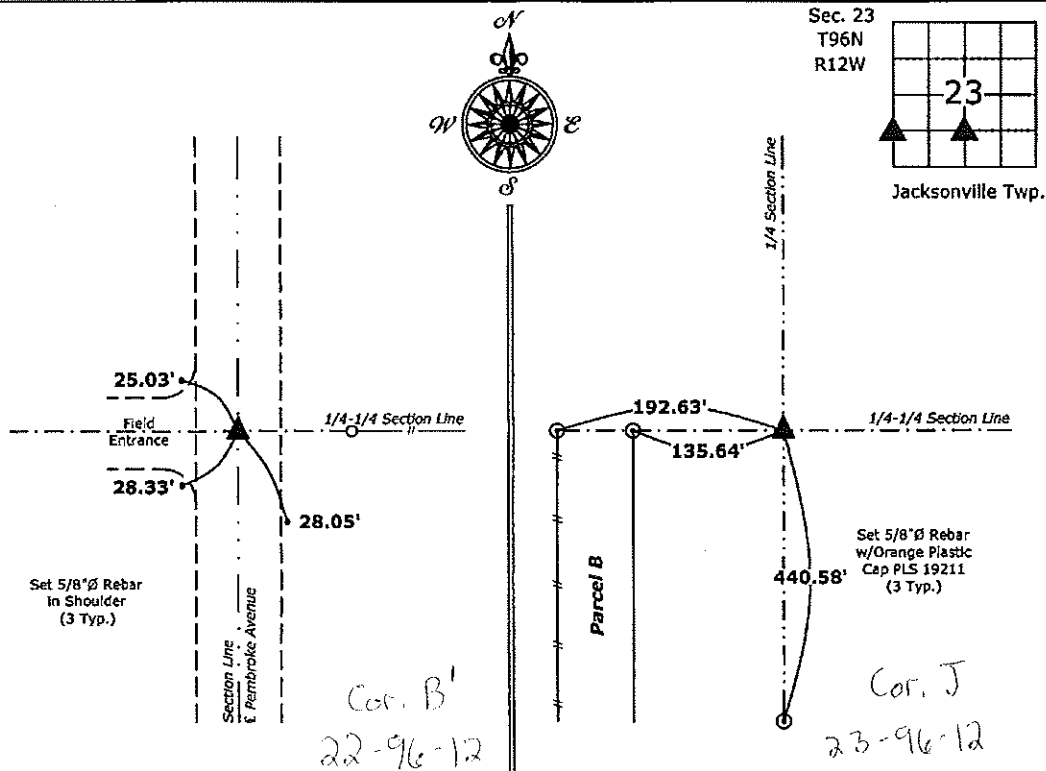
Monument Description and Remarks:

1.) Southwest Corner NW 1/4-SW 1/4: Set 5/8"Ø rebar with 2"Ø aluminum cap PLS 19211 equidistant and online between the West 1/4 and Southwest Corners of Section 23.

2.) Southeast Corner NE 1/4-SW 1/4: Set 5/8"Ø rebar with 2"Ø aluminum cap PLS 19211 at the intersection of a line between the South 1/4 Corner and Center of Section 23 and a line from the Southwest Corner of the NE 1/4-SW 1/4 through a possession line fence.

PLAN - VIEW

(Show a minimum of three reference ties to durable physical objects, relevant monuments and physical conditions that will enable recovery of the corner.)



1.) Southwest Corner NW 1/4-SW 1/4 Section 23-96-12
 Set 5/8"Ø rebar w/2"Ø aluminum cap PLS 19211

2.) Southeast Corner NE 1/4-SW 1/4 Section 23-96-12
 Set 5/8"Ø rebar w/2"Ø aluminum cap PLS 19211



I hereby certify that this land surveying document was prepared and the related survey work was performed by me or under my direct personal supervision and that I am a duly licensed Land Surveyor under the laws of the State of Iowa.
Kirk D. Reicks 11-27-13
 Kirk D. Reicks Date:
 License number 19211
 My license renewal date is December 31, 2014.
 Sheets covered by this seal: Individual sheet only

| List Corners to be Indexed | | | |
|----------------------------|---------|------|-------|
| Corners | Section | Twp. | Range |
| SW-NW-SW | 23 | 96 | 12 |
| SE-NE-SW | 23 | 96 | 12 |
| Project Number: 2013-170 | | | |
| FB: Chickasaw 6, Pgs. 2-4 | | | |

File: S:\CED Projects\2013-170-SCC.dwg, 11/27/2013 4:41:41 PM