

Prepared by & Return to: Herold - Reicks Surveying, 10 East Main Street, New Hampton, IA 50659, Ph. 641-394-2725

UNITED STATES PUBLIC LAND SURVEY CORNER CERTIFICATE

Land Survey Monuments situated in Section 22, Township 96 North, Range 12 West of the Fifth Principal Meridian, Chickasaw County, Iowa. 1.) Not previously recorded in the County Recorder's office. 2.) Previously recorded in Bk. 150, Pg. 238 in the County Recorder's office.

This certificate is being prepared in compliance with Iowa Code Chapter 355.11 because:

- 1 There is no certificate on file for this corner.
- 2 There are no longer three valid ties of record.
- There are changes to reference ties of record.
- There is change of monumentation of record.
- To clarify description of record monument (ties).

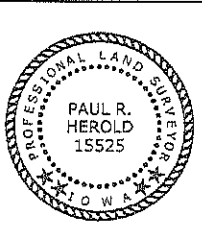
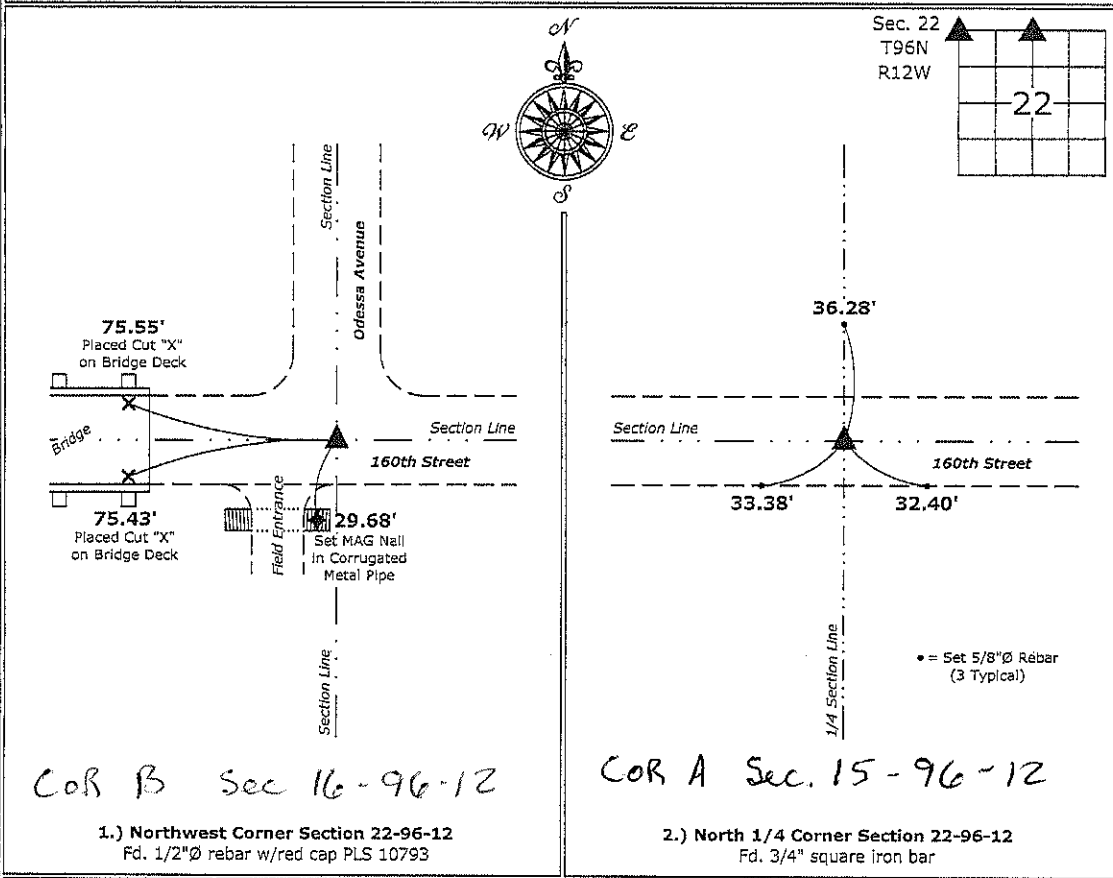
Monument Description and Remarks:

1.) **Northwest Corner:** Fd. 1/2"Ø rebar w/red cap PLS 10793 at the intersection of Odessa Avenue and 160th Street with information obtained in with information obtained from Chickasaw County Engineer's Field Book Jacksonville Twp. Ties to Corners, Section 16, Corner B.

2.) **North 1/4 Corner:** Fd. 3/4" square iron bar with information obtained from previous Section Corner Certificate. Set three new ties to aid in the future recovery of Corner. All previous ties were missing.

PLAN - VIEW

(Show a minimum of three reference ties to durable physical objects, relevant monuments and physical conditions that will enable recovery of the corner.)



I hereby certify that this land surveying document was prepared and the related survey work was performed by me or under my direct personal supervision and that I am a duly licensed Land Surveyor under the laws of the State of Iowa.

Paul R. Herold 8-29-16
 Paul R. Herold Date:
 License number 15525
 My license renewal date is December 31, 2016.
 Sheets covered by this seal: Individual sheet only

List Corners to be Indexed			
Corners	Section	Twp.	Range
NW	22	96	12
N 1/4	22	96	12

Project Number: 2016-109
 FB: Chickasaw County 8, Pgs. 4-5

File: S:_CSD Projects\County Control Systems\CHICKASAW\CHICK-22\CHICK-22.dwg, 8/26/2016 2:57:28 PM

UNITED STATES PUBLIC LAND SURVEY CORNER CERTIFICATE

OF
 Land Survey Monuments situated in Section 22, Township 96 NORTH, Range
12 WEST, of the Fifth Principal Meridian, CHICKASAW County, Iowa.
 Previously recorded in (NONE) in County Recorder's Office.
(book, page, document number, etc.)

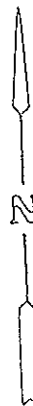
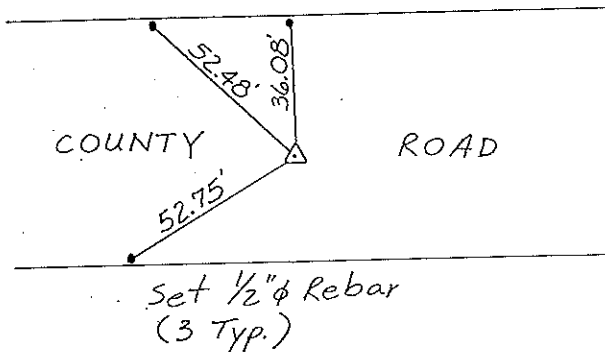
(Show reason for preparing this certificate, the evidence and detailed procedures used in establishing the corner positions and monumentation found or placed.)
 Monument Description and Remarks: N 1/4 CORNER, SECTION 22-T96N-R12W:
FOUND 3/4" ϕ SQUARE IRON PIN.

PLAN - VIEW

(Show a minimum of three reference ties to durable physical objects, relevant monuments and physical conditions that will enable recovery of the corner.)



Section 15-96-12
 As referred to in
 Engr. Title Book



Cor. A
 15-96-12

N 1/4 CORNER, SECTION 22-T96N-R12W

I hereby certify that the survey work was completed and this certificate was prepared by me or under my direct personal supervision and that I am a duly registered land surveyor under the laws of the state of Iowa.

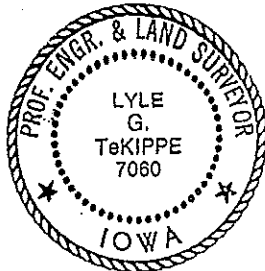
Signature: Lyle G. TeKippe
 Name typed or printed: Lyle G. TeKippe

Date: 8-25-92 Reg. No. 7060

Corners	List Corners to be Indexed		
	Section	Twp	Range
N 1/4	22	96N	12W

Cor. A 15-96-12
 Placed in Title Book
 9/2/92

SEAL



150-238

"County Engineer's Copy"