

# UNITED STATES PUBLIC LAND SURVEY CORNER CERTIFICATE

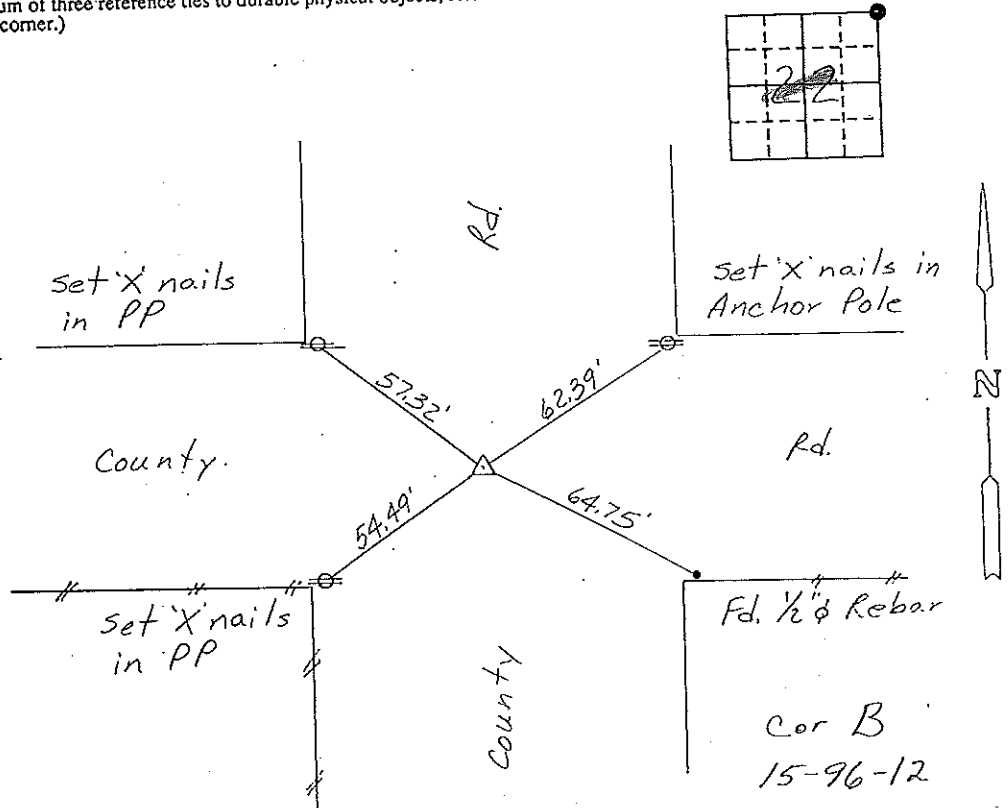
OF  
 Land Survey Monuments situated in Section 22, Township 96 NORTH, Range 12 WEST, of the Fifth Principal Meridian, CHICKASAW County, Iowa.  
 Previously recorded in (NONE) in County Recorder's Office.  
(book, page, document number, etc.)

(Show reason for preparing this certificate, the evidence and detailed procedures used in establishing the corner positions and monumentation found or placed.)  
 Monument Description and Remarks: NE CORNER, SECTION 22-T96N-R12W:  
FOUND 3/4" TWISTED IRON PIN WITH 1/2" TWISTED IRON PIN  
ON THE SE EDGE.

Section 15-96-12  
 As referred to  
 Engr. Tie Book

### PLAN - VIEW

(Show a minimum of three reference ties to durable physical objects, relevant monuments and physical conditions that will enable recovery of the corner.)

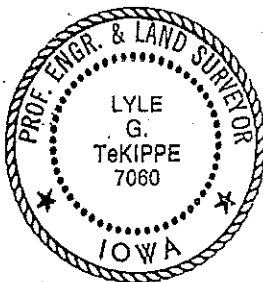


### NE CORNER, SECTION 22-T96N-R12W

I hereby certify that the survey work was completed and this certificate was prepared by me or under my direct personal supervision and that I am a duly registered land surveyor under the laws of the state of Iowa.

Signature: Lyle G. TeKippe  
 Name typed or printed: Lyle G. TeKippe  
 Date: 8-25-92 Reg. No. 7060

Corners	List Section	Twps	Range
NE	22	96N	12W



SEAL

Cor B 15-96-12  
 Placed in Tie Book