

Prepared by & Return to: Herold - Reicks Surveying, 10 East Main Street, New Hampton, IA 50659, Ph. 641-954-2725

UNITED STATES PUBLIC LAND SURVEY CORNER CERTIFICATE

Land Survey Monuments situated in Section ¹⁴23, Township 96 North, Range 12 West of the Fifth Principal Meridian, Chickasaw County, Iowa. 1., 2.) Not previously recorded in the County Recorder's office.

This certificate is being prepared in compliance with Iowa Code Chapter 355.11 because:

- 1 & 2 There is no certificate on file for this corner.
 There are no longer three valid ties of record.
 There are changes to reference ties of record.
 There is change of monumentation of record.
 To clarify description of record monument (ties).

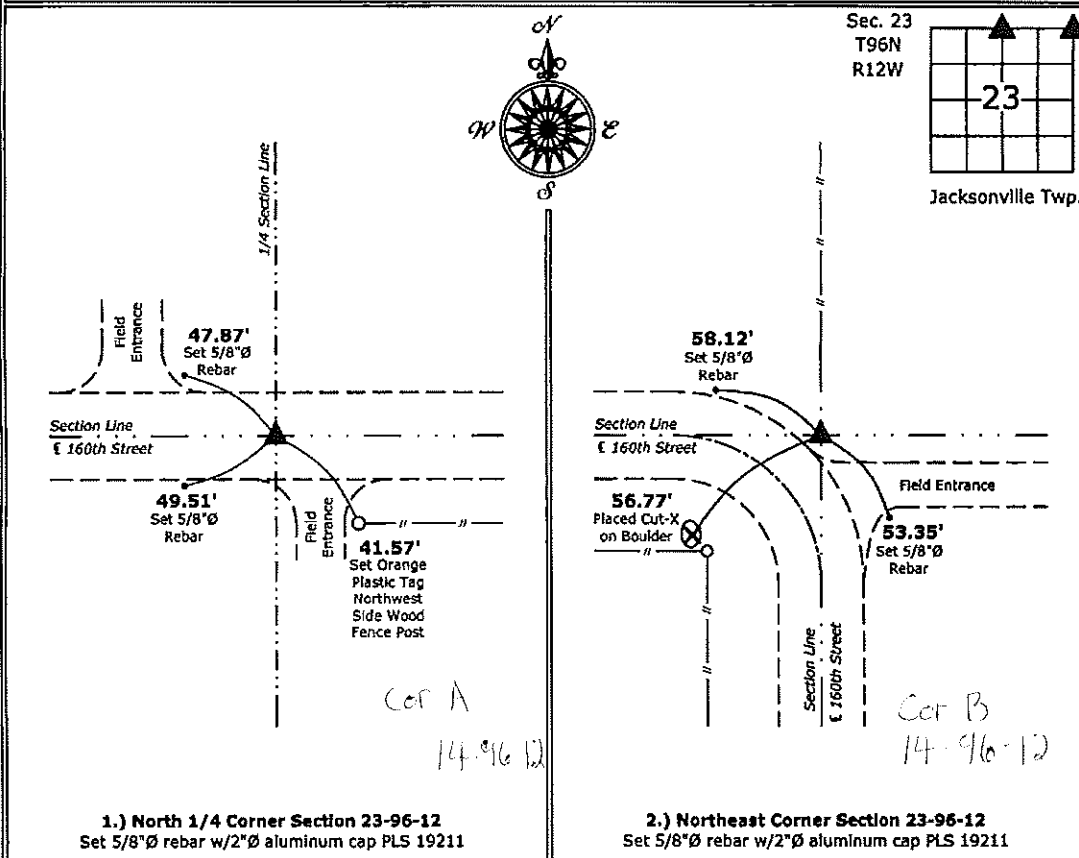
Monument Description and Remarks:

1.) **North 1/4 Corner:** Set 5/8"Ø rebar with 2"Ø aluminum cap PLS 19211 equidistant from the Northwest and Northeast Corners of Section 23 and at the Centerline of 160th Street.

2.) **Northeast Corner:** Set 5/8"Ø rebar w/2"Ø aluminum cap PLS 19211 at the intersection of the Centerlines of 160th Street and at the Southerly extension of a possession line fence from the North.

PLAN - VIEW

(Show a minimum of three reference ties to durable physical objects, relevant monuments and physical conditions that will enable recovery of the corner.)



1.) **North 1/4 Corner Section 23-96-12**
 Set 5/8"Ø rebar w/2"Ø aluminum cap PLS 19211

2.) **Northeast Corner Section 23-96-12**
 Set 5/8"Ø rebar w/2"Ø aluminum cap PLS 19211



I hereby certify that this land surveying document was prepared and the related survey work was performed by me or under my direct personal supervision and that I am a duly licensed Land Surveyor under the laws of the State of Iowa.

Kirk D. Reicks 11-27-13
 Kirk D. Reicks Date:
 License number 19211
 My license renewal date is December 31, 2014.
 Sheets covered by this seal: Individual sheet only

List Corners to be Indexed			
Corners	Section	Twp.	Range
N 1/4	23	96	12
NE	23	96	12

Project Number: 2013-170
 FB: Chickasaw 6, Pgs. 2-4