



Prepared by: Kyle A. Johnson Address: 1900 MEDICAL ARTS AVE S, SUITE 100 SARTELL, MN Phone: 1-888-937-5150

UNITED STATES PUBLIC LAND SURVEY CORNER CERTIFICATE FOR

Land survey monuments situated in Section 24, Township 96 NORTH

Range 12 WEST, of the Fifth Principal Meridian, CHICKASAW County, Iowa.

Previously Recorded in \_\_\_\_\_ in County Recorder's Office.

(Show reason for preparing this certificate, the evidence and detailed procedures used in establishing the corner positions and monumentation found or placed.)

MONUMENT DESCRIPTION AND REMARKS:

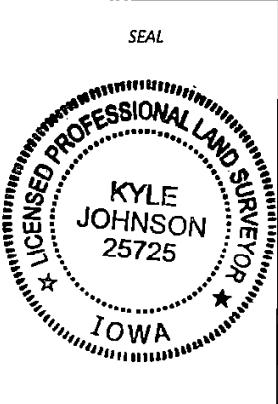
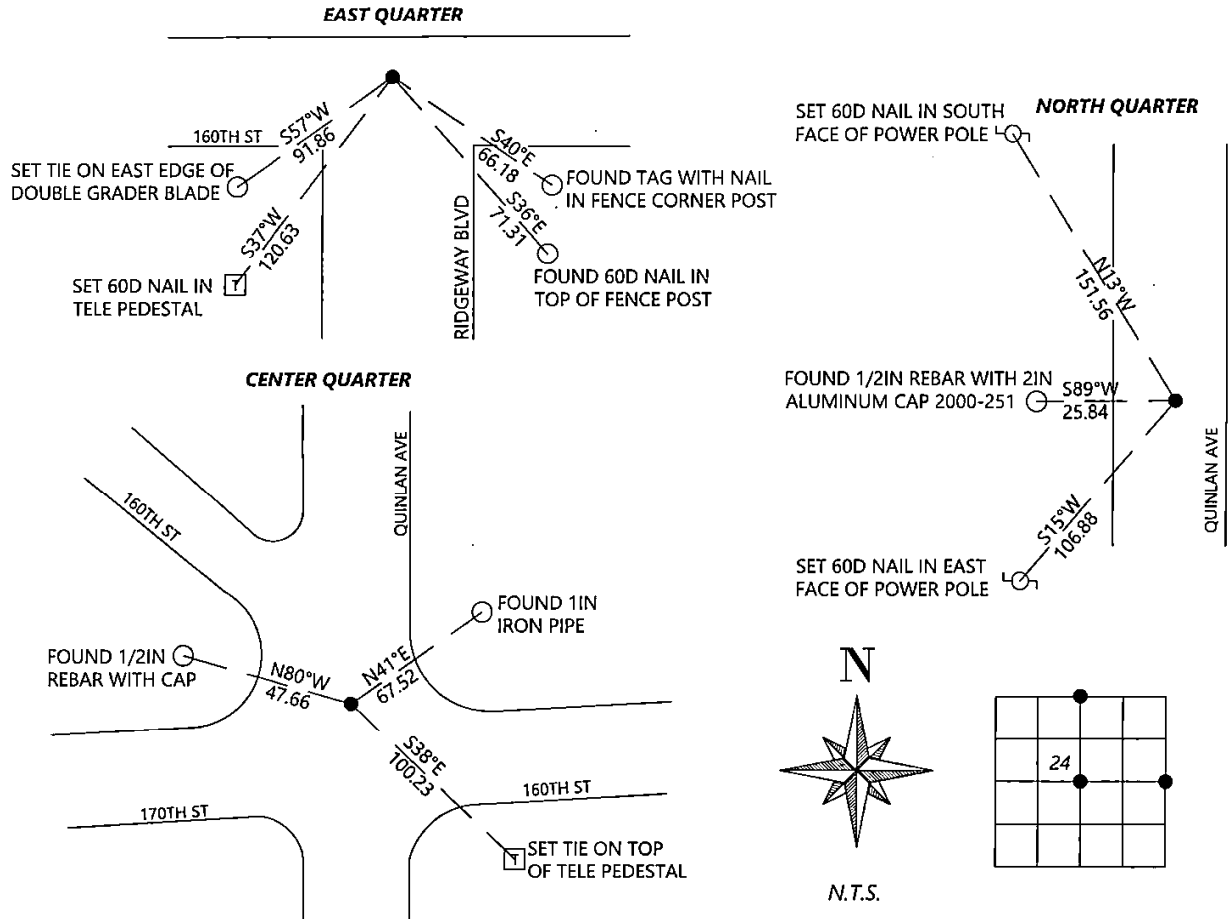
**NORTH QUARTER:** Westwood Professional Services found a 1/2" rebar 0.2' deep and 33.4' west of corner post which agrees with county engineer records. Found 1 tie of unknown origin and set 2. Accepting corner location as best available evidence. Filing corner record as there are no longer three valid ties of record.

**CENTER CORNER:** Westwood Professional Services found a 3/4" pipe 0.7' deep, 1 tie of previous record, 1 tie of unknown origin and set 1 tie. Corner agrees with north and south centerline and centerline extension of road from the east. Accepting corner location. Filing corner record as there is no certificate on file for this corner.

**EAST QUARTER:** Westwood Professional Services found a 1/2" square bar 0.3' deep and 2 ties per 1995 corner record. Accepting corner location and set 2 ties. Filing corner record as there are no longer three valid ties of record.

PLAN - VIEW

(Show a minimum of three reference ties to durable physical objects, relevant monuments and physical conditions that will enable recovery of the corner.)



I hereby certify that this land surveying document was prepared and the related survey work was performed by me or under my direct personal supervision and that I am a duly licensed Land Surveyor under the laws of the state of Iowa.

Kyle Johnson 10/14/2022  
 Signature Date

Typed/Printed Name: Kyle A. Johnson

License Number: 25725

My license renewal date is December 31, 2022

Pages or sheets covered by this seal: THIS SHEET

Corners to be Indexed

Corners	Section	Twp.	Range
NQ	24	96	12
CQ	24	96	12
EQ	24	96	12

Prepared by: Kyle A. Johnson Address: 1900 MEDICAL ARTS AVE S, SUITE 100 SARTELL, MN Phone: 1-888-937-5150

**UNITED STATES PUBLIC LAND SURVEY CORNER CERTIFICATE FOR**

Land survey monuments situated in Section 24, Township 96 NORTH  
12 WEST, of the Fifth Principal Meridian, CHICKASAW County, Iowa.

Previously Recorded in \_\_\_\_\_ in County Recorder's Office.

(Show reason for preparing this certificate, the evidence and detailed procedures used in establishing the corner positions and monumentation found or placed.)

**MONUMENT DESCRIPTION AND REMARKS:**

**NORTHEAST CORNER:** Westwood Professional Services searched the area and found no monument. A line between the NE of Section 13 and EQ of Section 24 T96N R12W fits the N/E/W fence line intersection for the E/W position. Single proportioned distance utilizing these same corners agrees with E/W fence lines N/S position. Holding the N/E/W fence intersection as the best available evidence of the corner location. Set 5/8" rebar with orange cap LS25725 on south side of corner post and set 3 ties. Filing corner record as there is no certificate on file for this corner.

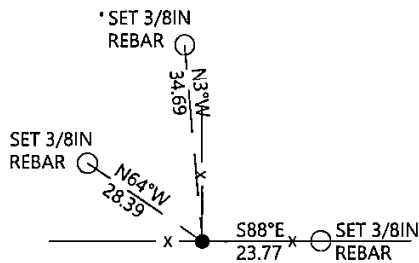
**SOUTHEAST CORNER:** Westwood Professional Services found a 4x4x15 granite stone, a 1/2" rebar with cap LS7060 on west side of stone and 2 ties per 1995 record. Accepting corner location and set 1 tie. Filing corner record as there are no longer 3 valid ties of record.

**PLAN - VIEW**

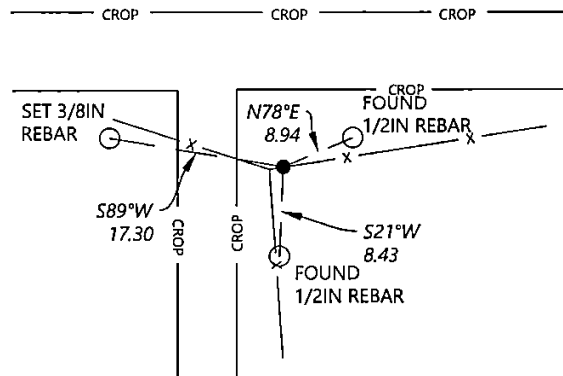
(Show a minimum of three reference ties to durable physical objects, relevant monuments and physical conditions that will enable recovery of the corner.)

**Cor. B 24-96-12**

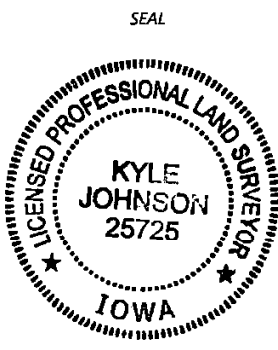
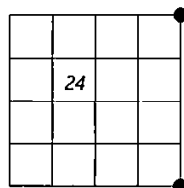
**NORTHEAST CORNER**



**SOUTHEAST CORNER**



N.T.S.



I hereby certify that this land surveying document was prepared and the related survey work was performed by me or under my direct personal supervision and that I am a duly licensed Land Surveyor under the laws of the state of Iowa.

Signature: Kyle Johnson Date: 10/4/2022

Typed/Printed Name: Kyle A. Johnson

License Number: 25725

My license renewal date is December 31, 2022

Pages or sheets covered by this seal: THIS SHEET

**Corners to be Indexed**

Corners	Section	Twp.	Range
NE	24	96	12
SE	24	96	12