

Prepared by & Return to: Herold - Reicks Surveying, 10 East Main Street, New Hampton, IA 50659, Ph. 641-354-2725

**UNITED STATES PUBLIC LAND SURVEY CORNER CERTIFICATE**

Land Survey Monuments situated in Section **25**, Township **96 North**, Range **12 West** of the Fifth Principal Meridian, **Chickasaw County, Iowa. 1., 2.)** Not previously recorded in the County Recorder's office.

This certificate is being prepared in compliance with Iowa Code Chapter 355.11 because:

1 & 2  There is no certificate on file for this corner.  
 There are no longer three valid ties of record.  
 There are changes to reference ties of record.  
 There is change of monumentation of record.  
 To clarify description of record monument (ties).

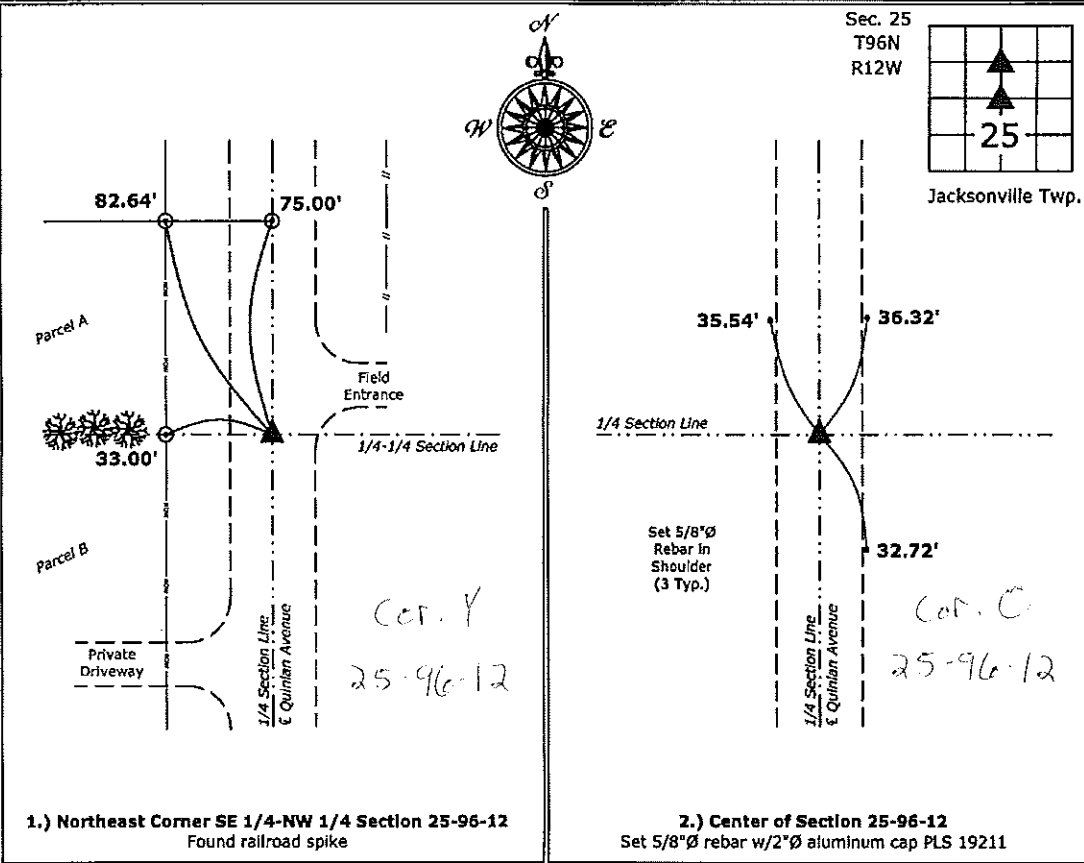
**Monument Description and Remarks:**

**1.) Northeast Corner SE 1/4-NW 1/4:** Found railroad spike with information obtained from a Survey and Plat made by Thomas V. Craft, recorded March 28, 1984 in Bk. 131, Pg. 144, on file in the Chickasaw County Recorders Office.

**2.) Center of Section:** Set 5/8"Ø rebar w/2"Ø aluminum cap PLS 19211 after doubling the distance from the North 1/4 Corner through and across the Northeast Corner of the SE 1/4-NW 1/4. Unable to locate stone as indicated in the County Engineers Section Corners Tie Book.

**PLAN - VIEW**

(Show a minimum of three reference ties to durable physical objects, relevant monuments and physical conditions that will enable recovery of the corner.)



**1.) Northeast Corner SE 1/4-NW 1/4 Section 25-96-12**  
 Found railroad spike

**2.) Center of Section 25-96-12**  
 Set 5/8"Ø rebar w/2"Ø aluminum cap PLS 19211



I hereby certify that this land surveying document was prepared and the related survey work was performed by me or under my direct personal supervision and that I am a duly licensed Land Surveyor under the laws of the State of Iowa.  
*Kirk D. Reicks 1-28-14*  
 Kirk D. Reicks Date:  
 License number 19211  
 My license renewal date is December 31, 2014.  
 Sheets covered by this seal: Individual sheet only

List Corners to be Indexed			
Corners	Section	Twp.	Range
NE-SE-NW	25	96	12
CTR	25	96	12

Project Number: 2014-010  
 FB: Chickasaw 6, Pgs. 23-24