

Chickasaw Co. Recorder
 Cindy Messersmith
Fee Book 2014-0119
 01/29/2014 @0945AM
 SCC SEC COR CERT Page: # Pages: 1
 Total Fees: \$7.00

Prepared by & Return to: Harold - Reicks Surveying, 10 East Main Street, New Hampton, IA 50659, Ph. 641-394-2725

UNITED STATES PUBLIC LAND SURVEY CORNER CERTIFICATE

Land Survey Monuments situated in Section ²⁶25, Township 96 North, Range 12 West of the Fifth Principal Meridian, Chickasaw County, Iowa. 1., 2.) Not previously recorded in the County Recorder's office.

This certificate is being prepared in compliance with Iowa Code Chapter 355.11 because:

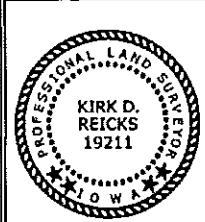
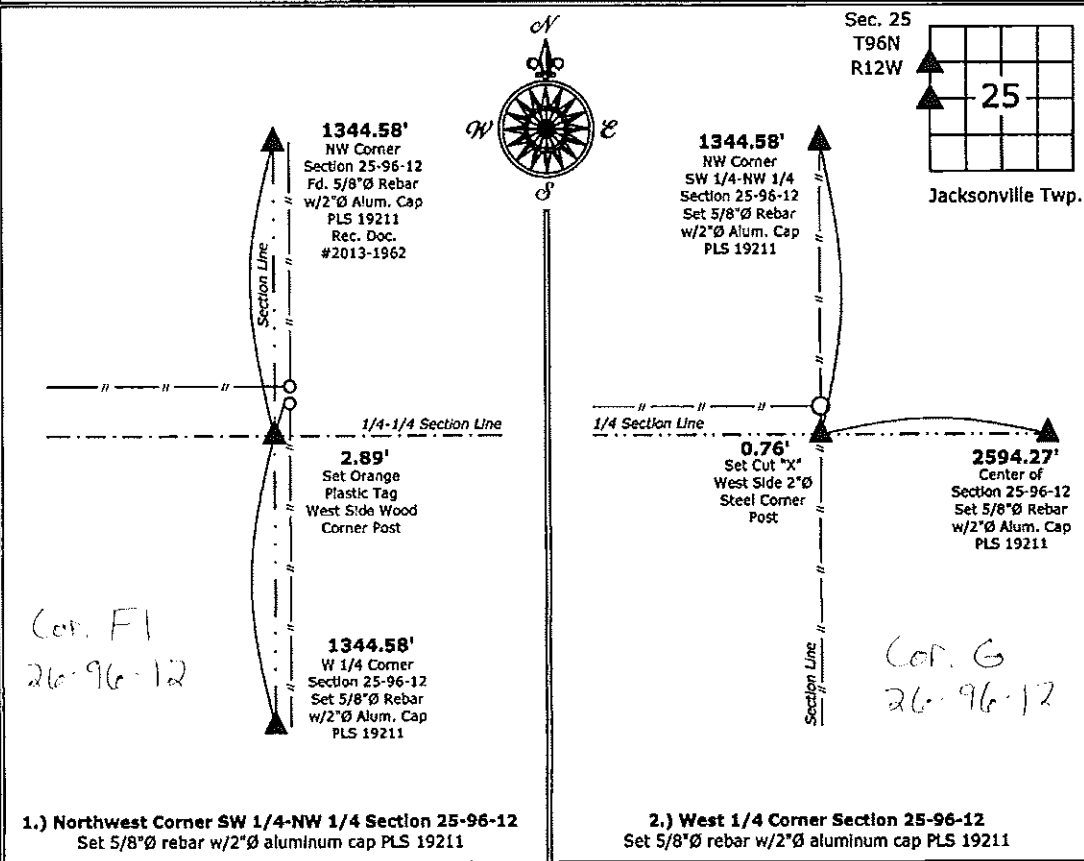
- 1 & 2 There is no certificate on file for this corner.
 There are no longer three valid ties of record.
 There are changes to reference ties of record.
 There is change of monumentation of record.
 To clarify description of record monument (ties).

Monument Description and Remarks:

- Northwest Corner SW 1/4-NW 1/4:** Set 5/8"Ø rebar w/2"Ø aluminum cap PLS 19211 equidistant and online between the Northwest and West 1/4 Corners of Section 25. Unable to locate stone as indicated in the County Engineers Section Corners Tie Book.
- West 1/4 Corner:** Set 5/8"Ø rebar with 2"Ø aluminum cap PLS 19211 at the intersection of possession line fences.

PLAN - VIEW

(Show a minimum of three reference ties to durable physical objects, relevant monuments and physical conditions that will enable recovery of the corner.)



I hereby certify that this land surveying document was prepared and the related survey work was performed by me or under my direct personal supervision and that I am a duly licensed Land Surveyor under the laws of the State of Iowa.
Kirk D. Reicks 1-28-14
 Kirk D. Reicks Date:
 License number 19211
 My license renewal date is December 31, 2014.
 Sheets covered by this seal: Individual sheet only

List Corners to be Indexed			
Corners	Section	Twp.	Range
NW-SW-NW	25	96	12
W 1/4	25	96	12

Project Number: 2014-010
 FB: Chickasaw 6, Pgs. 23-24

File: S:_C3D Projects\IURS County Control Systems\CHICKASAW\CHICK-22.dwg, 1/27/2014 4:13:50 PM