

UNITED STATES PUBLIC LAND SURVEY CORNER CERTIFICATE

OF

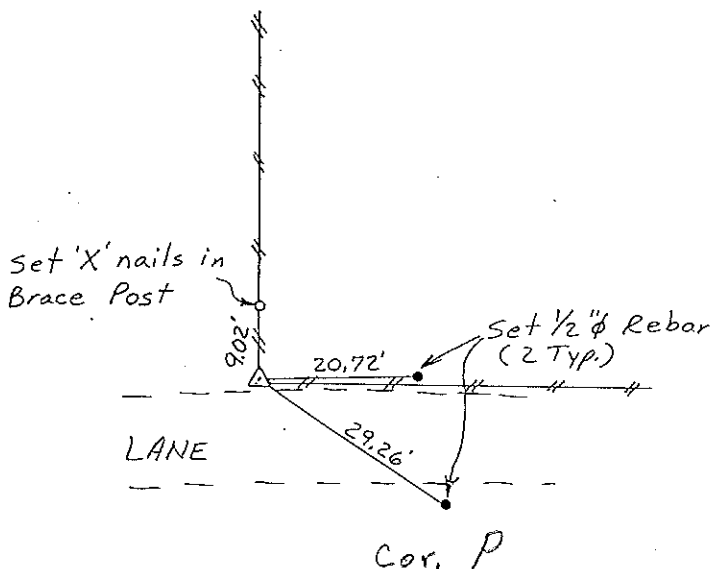
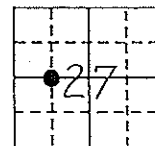
Land Survey Monuments situated in Section 27, Township 96 NORTH, Range 12 WEST, of the Fifth Principal Meridian, CHICKASAW County, Iowa. Previously recorded in (NONE) in County Recorder's Office.

(Show reason for preparing this certificate, the evidence and detailed procedures used in establishing the corner positions and monumentation found or placed.)

Monument Description and Remarks: SE CORNER, SW 1/4 - NW 1/4, SECTION 27-T96N-R12W:
FOUND STONE 12" DEEP, 1' NORTH OF FENCE CORNER POST,
RAISED WITH 1/2" Ø REBAR WITH CAP.

PLAN - VIEW

(Show a minimum of three reference ties to durable physical objects, relevant monuments and physical conditions that will enable recovery of the corner.)



SE CORNER, SW 1/4 - NW 1/4, SECTION 27-T96N-R12W

I hereby certify that the survey work was completed and this certificate was prepared by me or under my direct personal supervision and that I am a duly registered land surveyor under the laws of the state of Iowa.

Signature: Lyle G. TeKippe
Name typed or printed: Lyle G. TeKippe

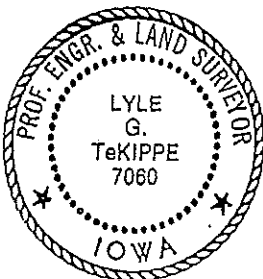
Date: 11-19-92 Reg. No. 7060

My Registration Expires December 31, 1992

Corners	Section	Twp	Range
SE Cor. SW 1/4-NW 1/4	27	96N	12W

*Corners 1 27-96-12
Placed in Te's Book
11/20/92*

SEAL



150-440

"County Engineer's Copy"