

Prepared by: Kyle A. Johnson Address: 1900 MEDICAL ARTS AVE S, SUITE 100 SARTELL, MN Phone: 1-888-937-5150

UNITED STATES PUBLIC LAND SURVEY CORNER CERTIFICATE FOR  
Land survey monuments situated in Section 29, Township 96 NORTH  
12 WEST, of the Fifth Principal Meridian, CHICKASAW County, Iowa.  
Previously Recorded in \_\_\_\_\_ in County Recorder's Office.  
(Show reason for preparing this certificate, the evidence and detailed procedures used in establishing the corner positions and monumentation found or placed.)

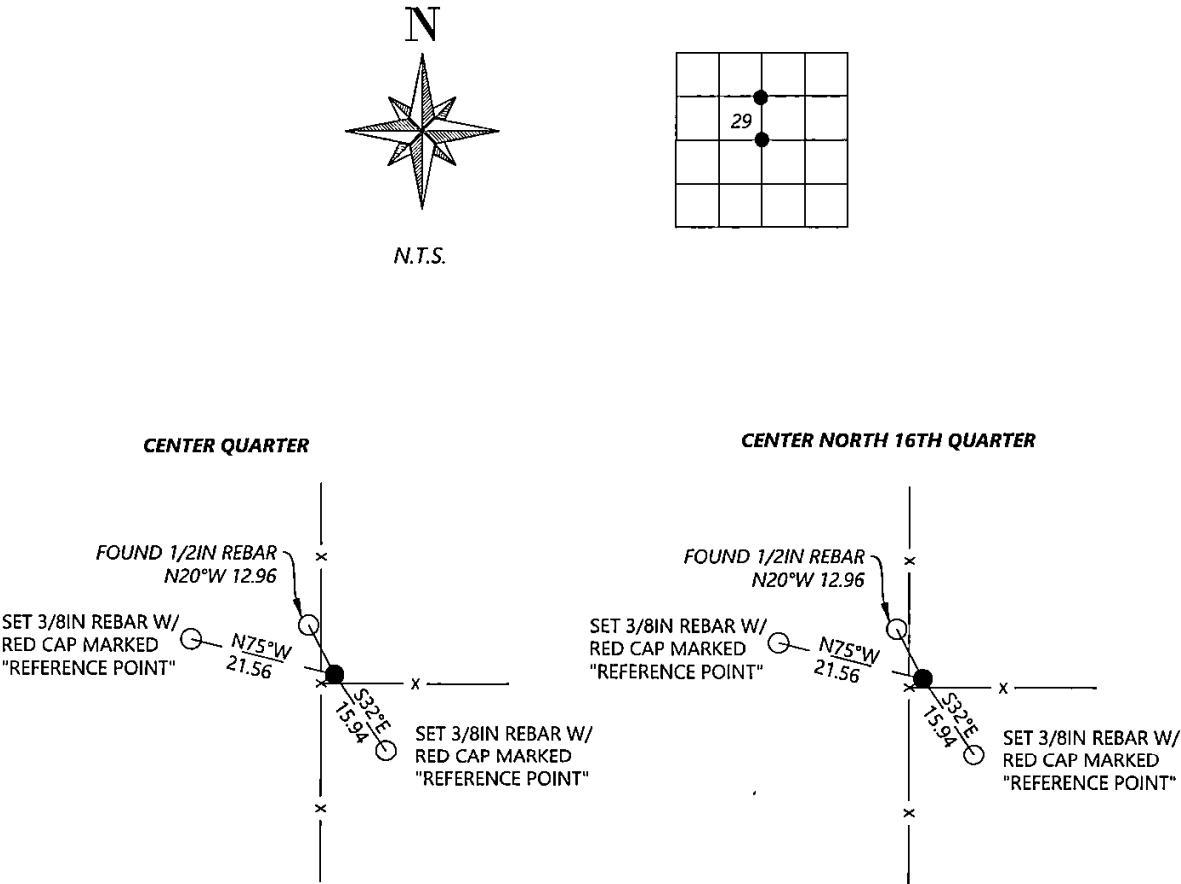
MONUMENT DESCRIPTION AND REMARKS:

**WEST QUARTER:** Westwood Professional Services found a 5/8" rebar with 2" aluminum cap LS19211 at fence line intersection. Accepting corner location and set 3 ties. Filing corner record as there are no longer 3 valid ties of record.

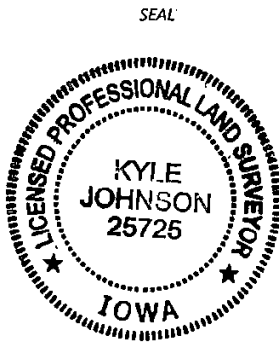
**CENTER NORTH 16TH:** Westwood Professional Services found a 8x8" blue granite stone and a 5/8" rebar with 2" aluminum cap on west side per 2020 Paul Herold corner record. Filing record due to missing ties.

PLAN - VIEW

(Show a minimum of three reference ties to durable physical objects, relevant monuments and physical conditions that will enable recovery of the corner.)



Cor. O 29-96-12



I hereby certify that this land surveying document was prepared and the related survey work was performed by me or under my direct personal supervision and that I am a duly licensed Land Surveyor under the laws of the state of Iowa.

Kyle A. Johnson 10/4/2022  
Signature Date  
Typed/Printed Name: Kyle A. Johnson  
License Number: 25725  
My license renewal date is December 31, 2022  
Pages or sheets covered by this seal: THIS SHEET

Corners to be Indexed			
Corners	Section	Twp.	Range
CQ	29	96	12
N16TH	29	96	12