

Prepared by & Return to: Herald - Reicks Surveying, 10 East Main Street, New Hampton, IA 50659, Ph. 641-394-2725

UNITED STATES PUBLIC LAND SURVEY CORNER CERTIFICATE

Land Survey Monuments situated in Section 28, Township 96 North, Range 12 West of the Fifth Principal Meridian, Chickasaw County, Iowa. 1.) Previously recorded in Bk. 163, Pg. 300 in the County Recorder's office. 2.) Not previously recorded in the County Recorder's office.

This certificate is being prepared in compliance with Iowa Code Chapter 355.11 because:



- 2 There is no certificate on file for this corner.
- There are no longer three valid ties of record.
- 1 There are changes to reference ties of record.
- There is change of monumentation of record.
- To clarify description of record monument (ties).

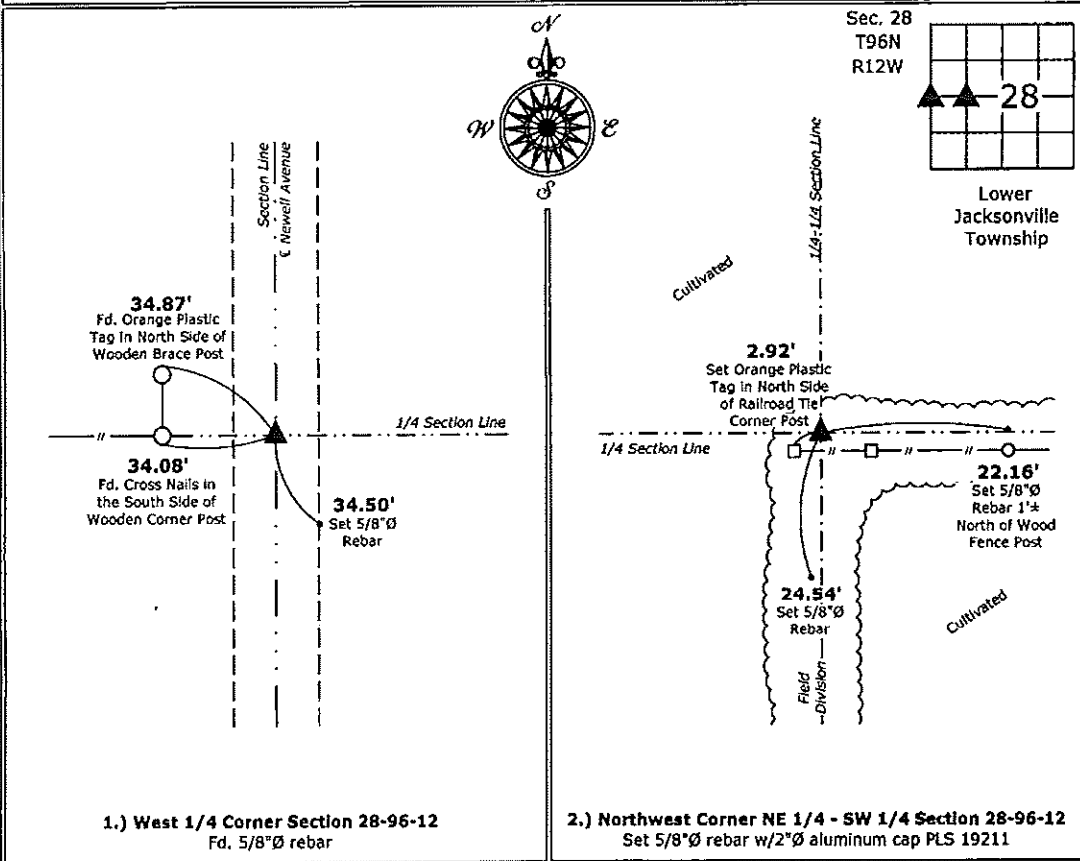
Monument Description and Remarks:

1.) **West 1/4 Corner:** Fd. 5/8"Ø rebar with information obtained from previous Section Corner Certificate, set one new tie to update corner.

2.) **Northwest Corner NE 1/4 - SW 1/4:** Set 5/8"Ø rebar w/2"Ø aluminum cap PLS 19211 equidistant and on line between the West 1/4 Corner and Center of Section 28.

PLAN - VIEW

(Show a minimum of three reference ties to durable physical objects, relevant monuments and physical conditions that will enable recovery of the corner.)



1.) West 1/4 Corner Section 28-96-12
Fd. 5/8"Ø rebar

2.) Northwest Corner NE 1/4 - SW 1/4 Section 28-96-12
Set 5/8"Ø rebar w/2"Ø aluminum cap PLS 19211



I hereby certify that this land surveying document was prepared and the related survey work was performed by me or under my direct personal supervision and that I am a duly licensed Land Surveyor under the laws of the State of Iowa.

Kirk D. Reicks 10-22-14
 Kirk D. Reicks Date:

License number 19211
 My license renewal date is December 31, 2014.
 Sheets covered by this seal: Individual sheet only

List Corners to be Indexed

Corners	Section	Twp.	Range
W 1/4	28	96	12
NW-NE-SW	28	96	12

Project Number: 2014-193

FB: Chickasaw County 6, Pg. 61

UNITED STATES PUBLIC LAND SURVEY CORNER CERTIFICATE

OF

Land Survey Monuments situated in Section 28 . Township 96 North, Range 12 West, of the Fifth Principal Meridian, CHICKASAW County, Iowa. Previously recorded in NONE in County Recorder's Office.

(book, page, document number, etc.)

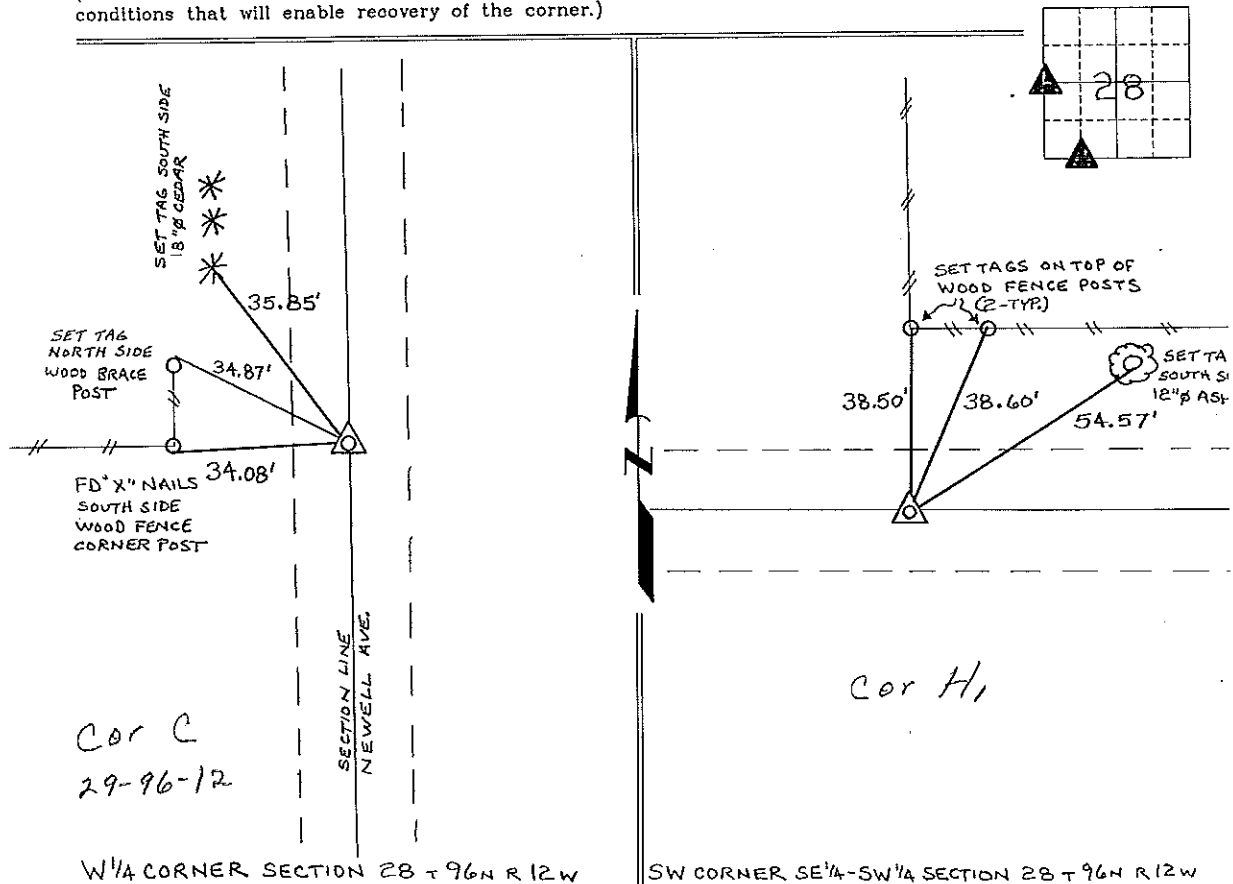
(Show reason for preparing this certificate, the evidence and detailed procedures used in establishing the corner positions and monumentation found or placed.)

Monument Description and Remarks: W 1/4 CORNER SECTION 28 T 96N R 12W: FOUND 5/8" ϕ REBAR w/CAP 7549, FROM INFORMATION ON A SURVEY AND PLAT MADE BY THOMAS V. CRAFT, RECORDED APRIL 28, 1980, DEEDS BOOK 122, PAGE 13.

SW CORNER SE 1/4 - SW 1/4 SECTION 28 T 96N R 12W: SET 1/2" ϕ REBAR w/CAP 7060, EQUADISTANT AND ON LINE BETWEEN THE SW CORNER & S 1/4 CORNER.

PLAN - VIEW

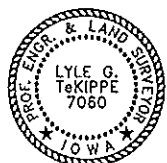
(Show a minimum of three reference ties to durable physical objects, relevant monuments and physical conditions that will enable recovery of the corner.)



W 1/4 CORNER SECTION 28 T 96N R 12W

SW CORNER SE 1/4 - SW 1/4 SECTION 28 T 96N R 12W

I hereby certify that this land surveying document was prepared and the related survey work was performed by me or under my direct personal supervision and that I am a duly licensed Land Surveyor under the laws of the State of Iowa.



Lyle G. TeKippe 2-3-97
 Lyle G. TeKippe Date
 License number 7060
 My license renewal date is December 31, 1998.
 Sheets covered by this seal: Individual

List Corners to be Indexed

Corners	Section	Twp.	Range
W 1/4	28	96N	12W
Corner C -	29-96-12		
SW-SE-SW	28	96N	12W
Corner Corner H ₁ -	28-96-12		

Placed in tie book