

2602 OCT 22 AM 9 18

CINDY MESSERSMITH
 COUNTY RECORDER

TeKIPPE ENGINEERING, P.C., 128 South Vine Street, West Union, Iowa 52175 Phone (563) 422-5131

UNITED STATES PUBLIC LAND SURVEY CORNER CERTIFICATE

OF

Land Survey Monuments situated in Section 29, Township 96 North, Range 12 West of the Fifth Principal Meridian, CHICKASAW County, Iowa.
 Previously recorded in none in County Recorder's Office.
 (book, page, document number, etc.)

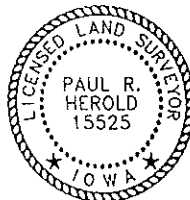
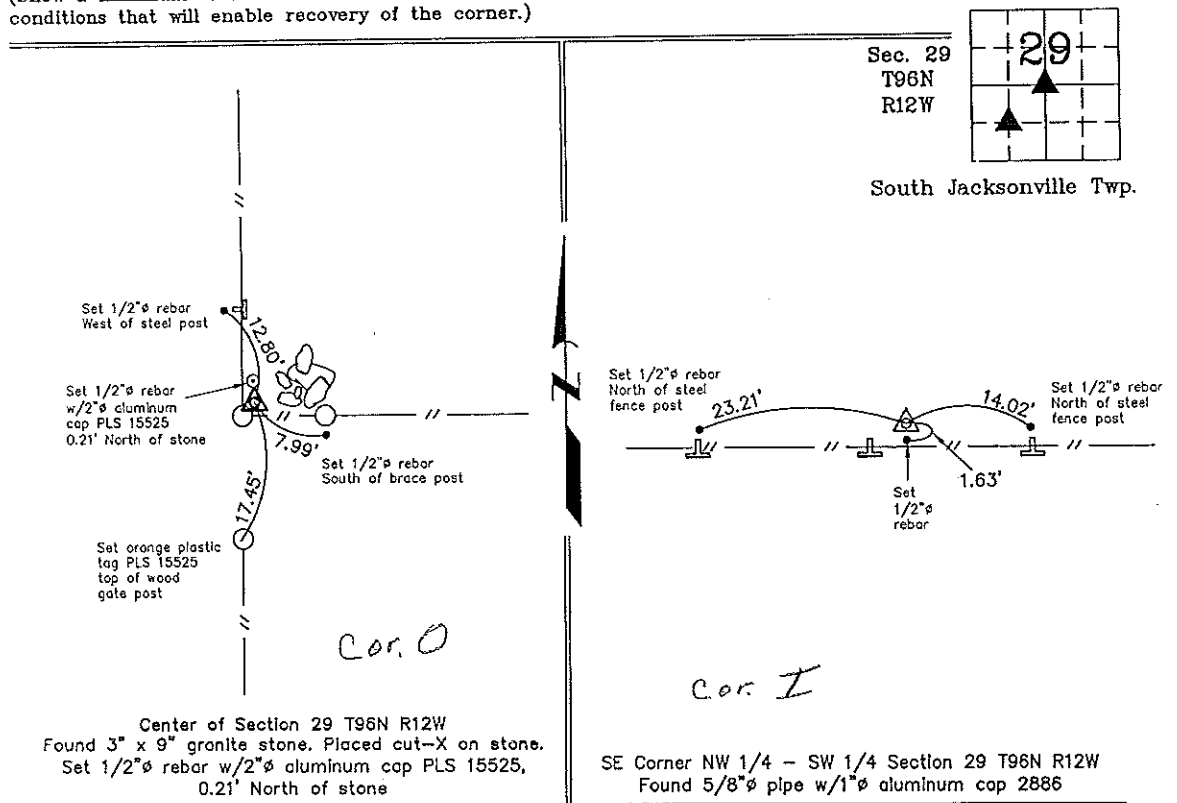
(Show reason for preparing this certificate, the evidence and detailed procedures used in establishing the corner positions and monumentation found or placed.)

Monument Description and Remarks: Center of Section 29 T96N R12W: Found 3" x 9" x 15" granite stone with information obtained from the Chickasaw County Engineer's Office in Field Book Corner Ties, Jacksonville South Twp. Placed cut-X on stone. Set 1/2"Ø rebar w/2"Ø aluminum cap PLS 15525, 0.21' North of stone.
SE Corner NW 1/4 - SW 1/4 Section 29 T96N R12W: Found 5/8"Ø pipe w/1"Ø aluminum cap 2886 with information obtained from a Survey and Plat made by L. P. Erdman recorded in the Chickasaw County Recorder's Office January 23, 1981 in Deeds Book 123, Page 274.

PLAN - VIEW

Project Number 02239.LS
 FB. 48J PG. 41-42

(Show a minimum of three reference ties to durable physical objects, relevant monuments and physical conditions that will enable recovery of the corner.)



I hereby certify that this land surveying document was prepared and the related survey work was performed by me or under my direct personal supervision and that I am a duly licensed Land Surveyor under the laws of the State of Iowa.

Paul R. Herold 10-18-02
 Paul R. Herold Date
 License number 15525
 My license renewal date is December 31, 2002.
 Sheets covered by this seal: Individual

List Corners to be Indexed

Corners	Section	Twp.	Range
Center	29	96N	12W
SE-NW-SW	29	96N	12W

Filed 11-5-02

X:\Section Corners\Sec. 29\29-96-12mq.dwg

"County Engineer's Copy"