

FILED 2002-0867
 RECORDER'S OFFICE
 CHICKASAW COUNTY, IOWA
 2002 APR 50 AM 8 49
 GINDY MESSERSMITH
 COUNTY RECORDER

TeKIPPE ENGINEERING, P.C., 128 South Vine Street, West Union, Iowa 52175 Phone (319) 422-5131

UNITED STATES PUBLIC LAND SURVEY CORNER CERTIFICATE

OF

Land Survey Monuments situated in Section 29, Township 96 North, Range 12 West of the Fifth Principal Meridian, CHICKASAW County, Iowa.

Previously recorded in none in County Recorder's Office.
(book, page, document number, etc.)

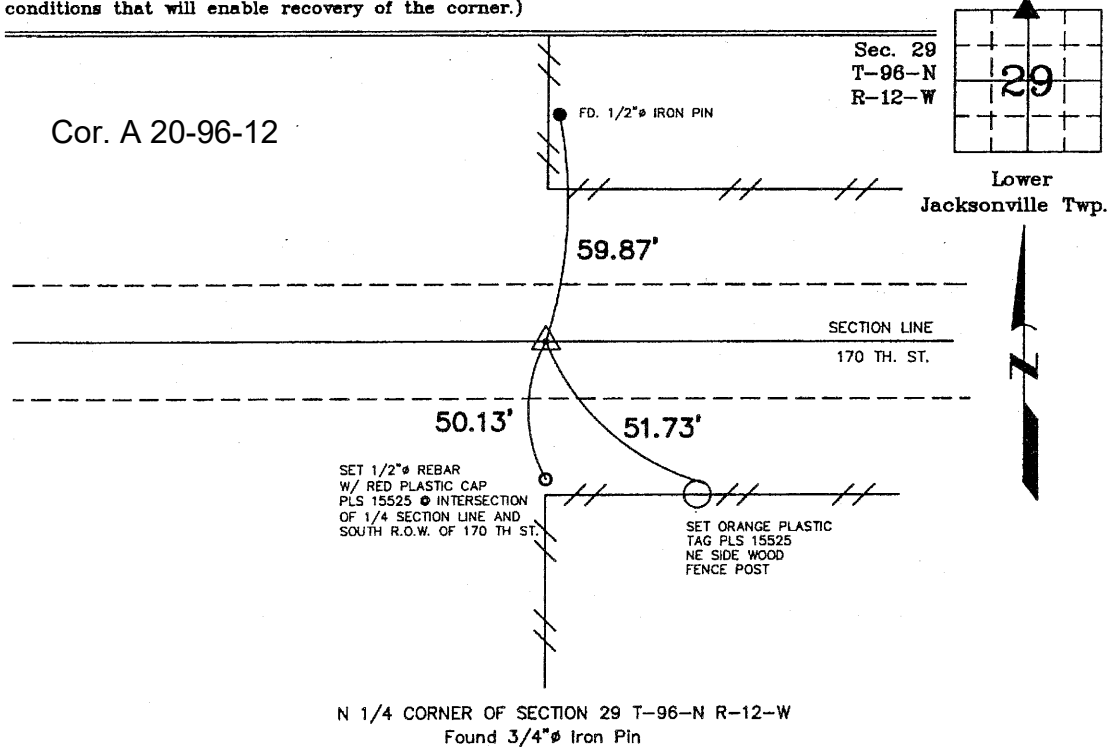
(Show reason for preparing this certificate, the evidence and detailed procedures used in establishing the corner positions and monumentation found or placed.)

Monument Description and Remarks: N 1/4 Corner of Section 29, T-96-N, R-12-W:
Found 3/4" Iron Pin with information obtained from the county engineers office in
Fieldbook Lwr. Jacksonville Twp. Corner Ties, section 20, corner A.

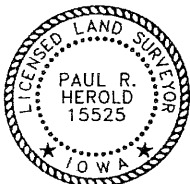
PLAN - VIEW

290612a.dwg Project Number 020611S
 FB. 46 J PGS. 4 - 5

(Show a minimum of three reference ties to durable physical objects, relevant monuments and physical conditions that will enable recovery of the corner.)



N 1/4 CORNER OF SECTION 29 T-96-N R-12-W
 Found 3/4" Iron Pin



I hereby certify that this land surveying document was prepared and the related survey work was performed by me or under my direct personal supervision and that I am a duly licensed Land Surveyor under the laws of the State of Iowa.

Paul R. Herold 4-4-02
 Paul R. Herold Date
 License number 15525
 My license renewal date is December 31, 2002.
 Sheets covered by this seal: Individual

List Corners to be Indexed

Corners	Section	Twp.	Range
N 1/4	29	T-96-N	R-12-W