

Section 20-96-12
As referred to in
Engr. Tie Book

FILED 2002-0868
RECORDER'S OFFICE
CHICKASAW COUNTY, IOWA
2002 APR 5 AM 8 50
CINDY MESSERSMITH
COUNTY RECORDER

TeKIPPE ENGINEERING, P.C., 128 South Vine Street, West Union, Iowa 52175 Phone (319) 422-5131

UNITED STATES PUBLIC LAND SURVEY CORNER CERTIFICATE

OF

Land Survey Monuments situated in Section 29, Township 96 North, Range 12 West of the Fifth Principal Meridian, CHICKASAW County, Iowa.
Previously recorded in none in County Recorder's Office.
(book, page, document number, etc.)

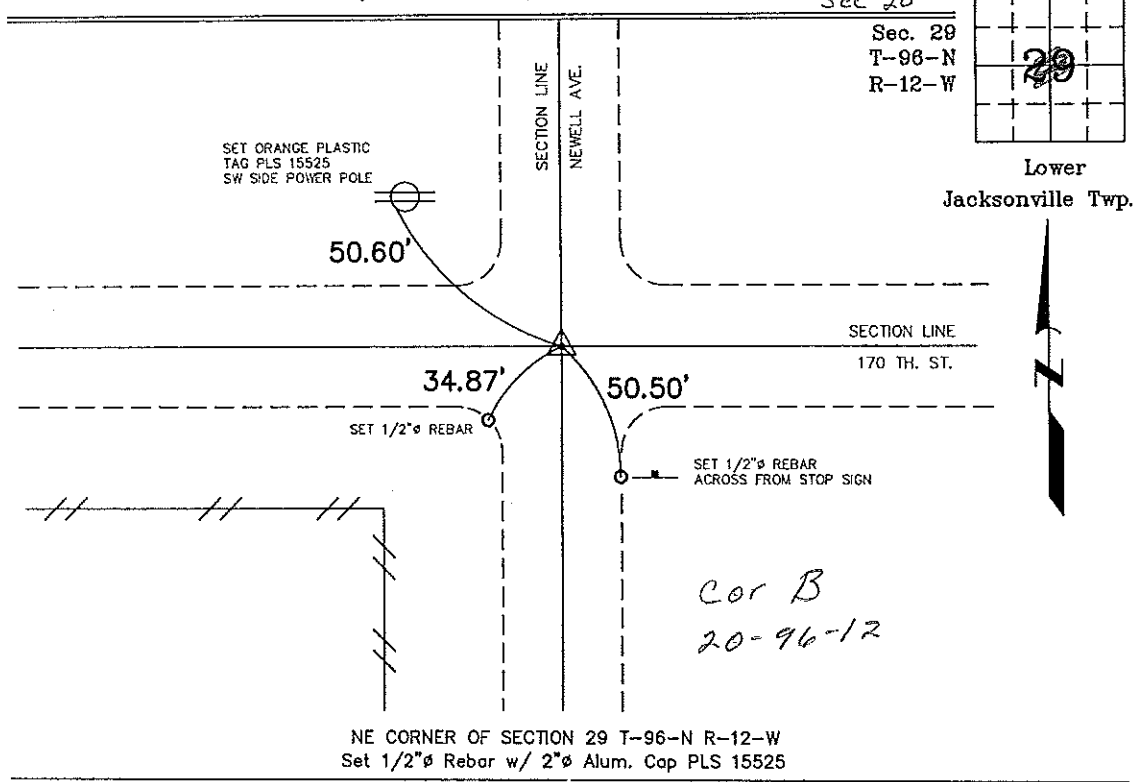
(Show reason for preparing this certificate, the evidence and detailed procedures used in establishing the corner positions and monumentation found or placed.)

Monument Description and Remarks: NE Corner of Section 29, T-96-N, R-12-W:
Found 1/2"Ø Rebar 20" deep, set 1/2"Ø Rebar w/ 2"Ø Alum. Cap PLS 15525 over.
Corner was found with information obtained from the county engineers office in Fieldbook Lwr. Jacksonville Twp. Corner Ties, Section 20, Corner B.

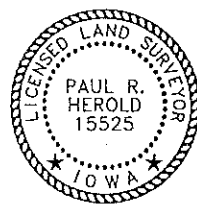
PLAN - VIEW

290612e.dwg Project Number 0208115
FB. 48 f PGS. 4 - 5

(Show a minimum of three reference ties to durable physical objects, relevant monuments and physical conditions that will enable recovery of the corner.)



NE CORNER OF SECTION 29 T-96-N R-12-W
Set 1/2"Ø Rebar w/ 2"Ø Alum. Cap PLS 15525



I hereby certify that this land surveying document was prepared and the related survey work was performed by me or under my direct personal supervision and that I am a duly licensed Land Surveyor under the laws of the State of Iowa.
Paul R. Herold 4-4-02
Paul R. Herold Date
License number 15525
My license renewal date is December 31, 2002.
Sheets covered by this seal Individual

List Corners to be Indexed			
Corners	Section	Twp.	Range
NE	29	T-96-N	R-12-W

Filed 4-8-02

County Engineers
P. D. S.