

Chickasaw Co. Recorder
Cindy Messersmith
Fee Book 2007-1488
07/20/2007 @0920AM
SCC SEC COR CERT
Book: Page: # Pages: 1
Total Fees: \$7.00

TEKIPPE ENGINEERING, P.C., 128 South Vine Street, West Union, Iowa 52175 Phone (563) 422-5131

UNITED STATES PUBLIC LAND SURVEY CORNER CERTIFICATE

OF

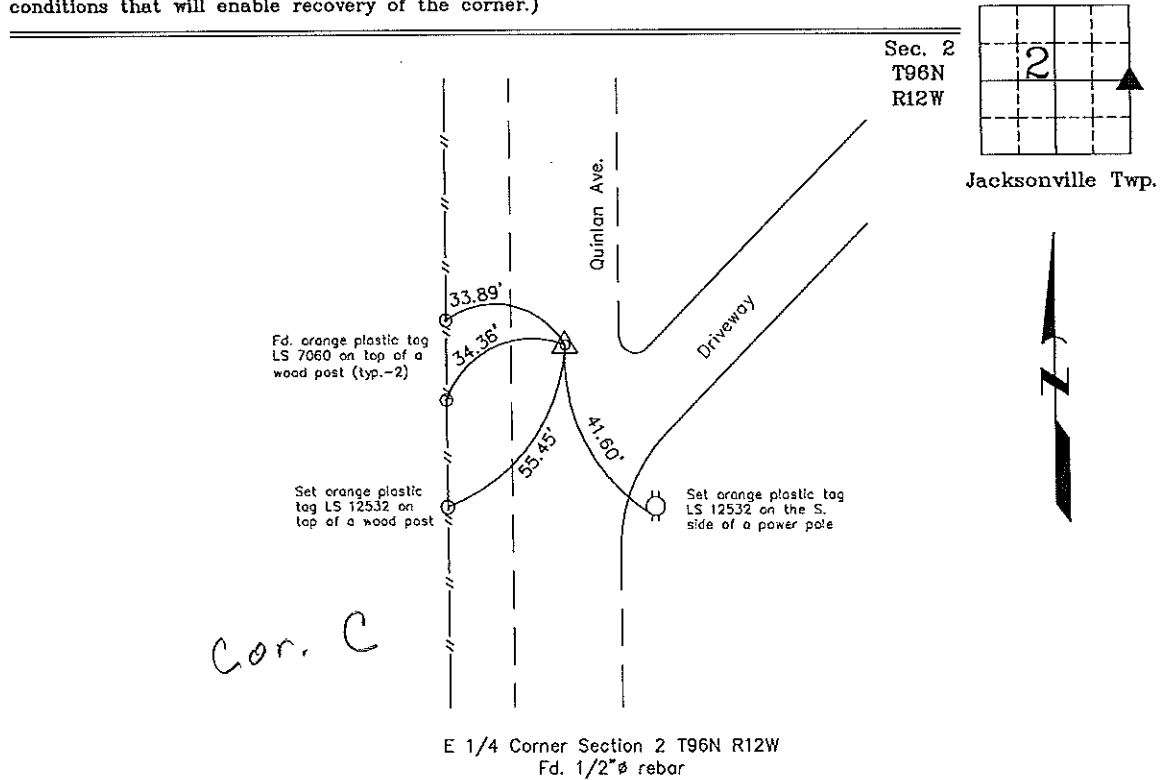
Land Survey Monuments situated in Section 2, Township 96 North, Range 12 West of the Fifth Principal Meridian, Chickasaw County, Iowa. Previously recorded in Bk. 161, Pg. 123 in County Recorder's Office.
(book, page, document number, etc.)

(Show reason for preparing this certificate, the evidence and detailed procedures used in establishing the corner positions and monumentation found or placed.)

Monument Description and Remarks: E 1/4 Corner Section 2 T96N R12W: Found 1/2"Ø rebar, two ties were missing, set two new reference ties.

PLAN - VIEW

(Show a minimum of three reference ties to durable physical objects, relevant monuments and physical conditions that will enable recovery of the corner.)



I hereby certify that this land surveying document was prepared and the related survey work was performed by me or under my direct personal supervision and that I am a duly licensed Land Surveyor under the laws of the State of Iowa.

Gary L. Casady 7-13-07
Gary L. Casady Date
License number 12532
My license renewal date is December 31, 2008.
Sheets covered by this seal: Individual

List Corners to be Indexed			
Corners	Section	Twp.	Range
E 1/4	2	96N	12W

Project Number 07177.LS
FB. 46M, PGS. 38-41
X:\Section Corners\Sec. 2-96-12a.dwg

UNITED STATES PUBLIC LAND SURVEY CORNER CERTIFICATE

OF

Land Survey Monuments situated in Section 2, Township 96 North, Range 12 West, of the Fifth Principal Meridian, CHICKASAW County, Iowa. Previously recorded in NONE in County Recorder's Office.

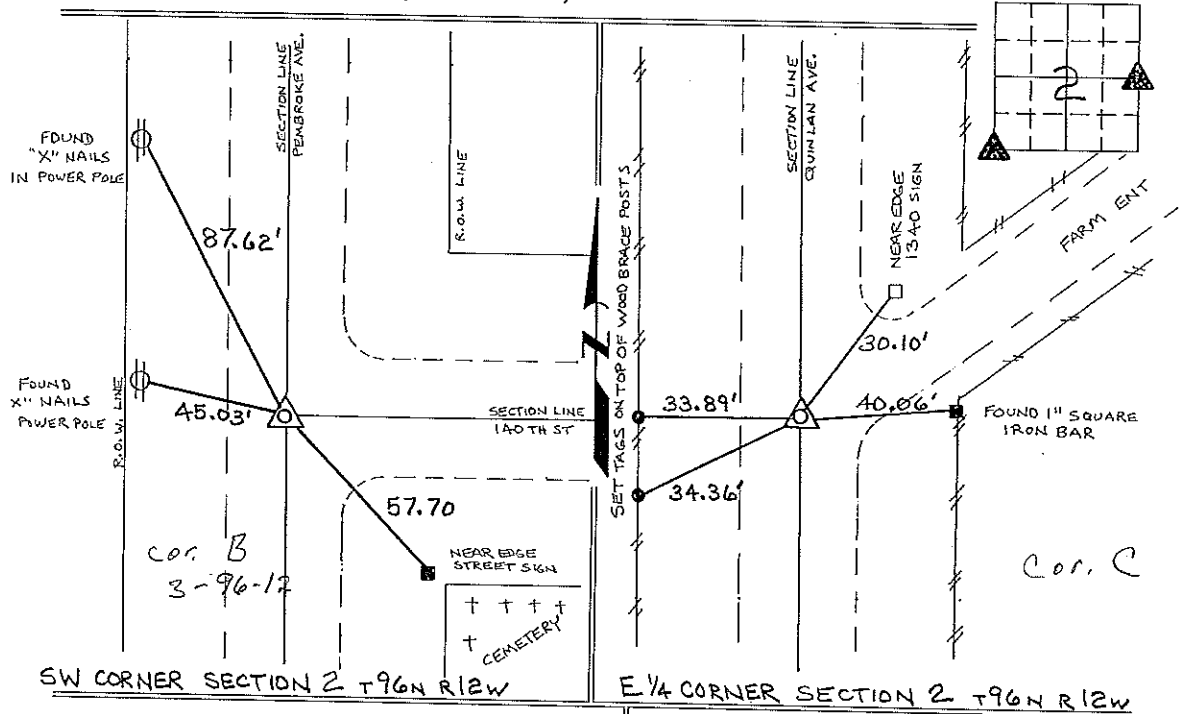
(Show reason for preparing this certificate, the evidence and detailed procedures used in establishing the corner positions and monumentation found or placed.)

Monument Description and Remarks: SW CORNER SECTION 2 T96N R12W: FOUND 3/4" SQUARE IRON BAR FROM INFORMATION OBTAINED FROM THE COUNTY ENGINEERS OFFICE, IN FIELD BOOK "JACKSONVILLE TWP. CORNER TIES".

E 1/4 CORNER SECTION 2 T96N R12W: FOUND 1/2" Ø REBAR FROM INFORMATION OBTAINED FROM THE COUNTY ENGINEERS OFFICE, IN FIELD BOOK "JACKSONVILLE TWP CORNER TIES".

PLAN - VIEW

(Show a minimum of three reference ties to durable physical objects, relevant monuments and physical conditions that will enable recovery of the corner.)



I hereby certify that the survey work was completed and this certificate was prepared by me or under my direct personal supervision and that I am a duly registered land surveyor under the laws of the state of Iowa.

Signature: Lyle G. TeKippe
Lyle G. TeKippe

Date: 5-24-96 Reg. No. 7080
My Registration Renewal Date is December 31, 1998

Seal



List Corners to be Indexed			
Corners	Section	Twp.	Range
SW	2	96N	12W
	Corner B	3-96-12	
E 1/4	2	96N	12W
	Corner C	2-96-12	

*Placed in file
B.P.C. 6/17/96*