

Chickasaw Co. Recorder  
Cindy Messersmith  
**Fee Book 2007-1486**  
07/20/2007 @0915AM  
SCC SEC COR CERT  
Book: Page: # Pages: 1  
Total Fees: \$7.00

TeKIPPE ENGINEERING, P.C., 128 South Vine Street, West Union, Iowa 52175 Phone (563) 422-5131

**UNITED STATES PUBLIC LAND SURVEY CORNER CERTIFICATE**

OF

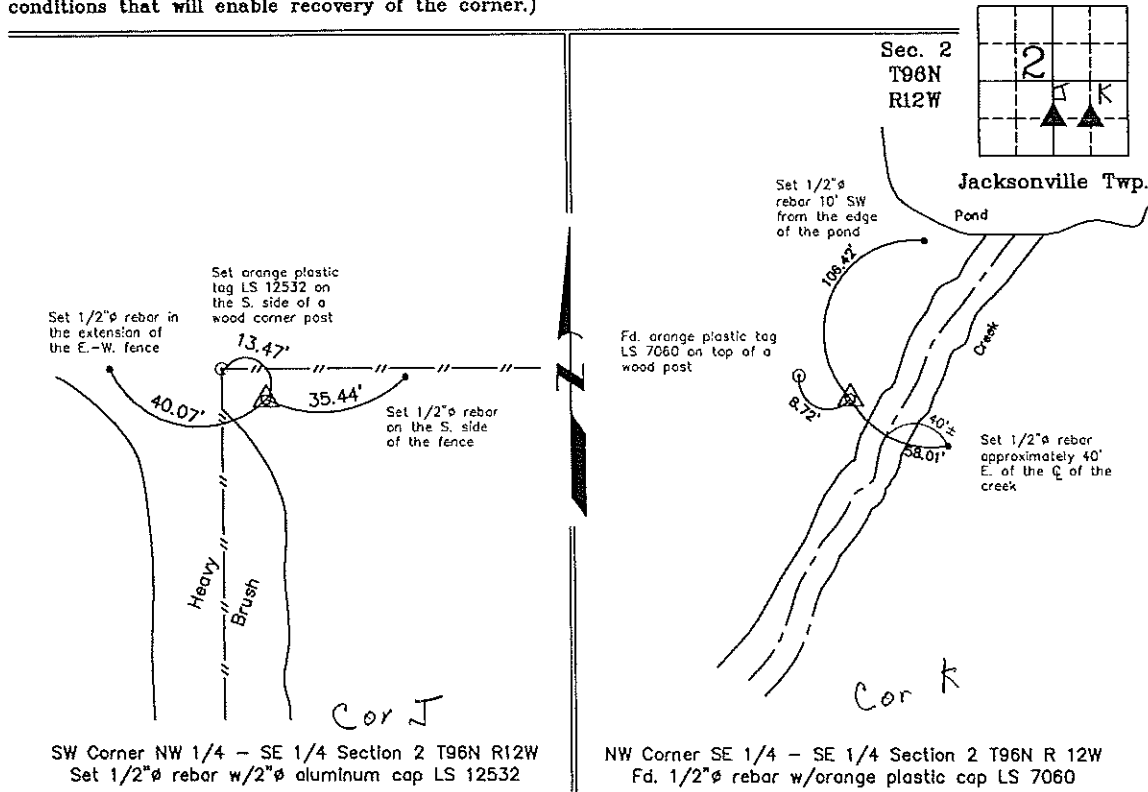
Land Survey Monuments situated in Section 2, Township 96 North, Range 12 West of the Fifth Principal Meridian, Chickasaw County, Iowa.  
Previously recorded in 1. none 2. Bk. 161, Pg. 124 in County Recorder's Office.  
(book, page, document number, etc.)

(Show reason for preparing this certificate, the evidence and detailed procedures used in establishing the corner positions and monumentation found or placed.)

**Monument Description and Remarks:** 1. SW Corner NW 1/4 - SE 1/4 Section 2 T96N R12W: Set 1/2"Ø rebar w/2"Ø aluminum cap LS 12532 on-line and equidistant between the center and the South 1/4 Corner of the Section.  
2. NW Corner SE 1/4 - SE 1/4 Section 2 T96N R12W: Found 1/2"Ø rebar w/ orange plastic cap LS 7060, previously recorded in Book 161, Page 124. Two ties were missing, two new ties were set.

**PLAN - VIEW**

(Show a minimum of three reference ties to durable physical objects, relevant monuments and physical conditions that will enable recovery of the corner.)



SW Corner NW 1/4 - SE 1/4 Section 2 T96N R12W  
Set 1/2"Ø rebar w/2"Ø aluminum cap LS 12532

NW Corner SE 1/4 - SE 1/4 Section 2 T96N R 12W  
Fd. 1/2"Ø rebar w/orange plastic cap LS 7060



I hereby certify that this land surveying document was prepared and the related survey work was performed by me or under my direct personal supervision and that I am a duly licensed Land Surveyor under the laws of the State of Iowa.  
*Gary L. Casady* 7-19-07  
Gary L. Casady Date  
License number 12532  
My license renewal date is December 31, 2008.  
Sheets covered by this seal: Individual

List Corners to be Indexed			
Corners	Section	Twp.	Range
SW-NW-SE	2	96N	12W
NW-SE-SE	2	96N	12W

UNITED STATES PUBLIC LAND SURVEY CORNER CERTIFICATE

OF

Land Survey Monuments situated in Section 2, Township 96 North, Range 12 West, of the Fifth Principal Meridian, CHICKASAW County, Iowa. Previously recorded in NONE in County Recorder's Office.

(book, page, document number, etc.)

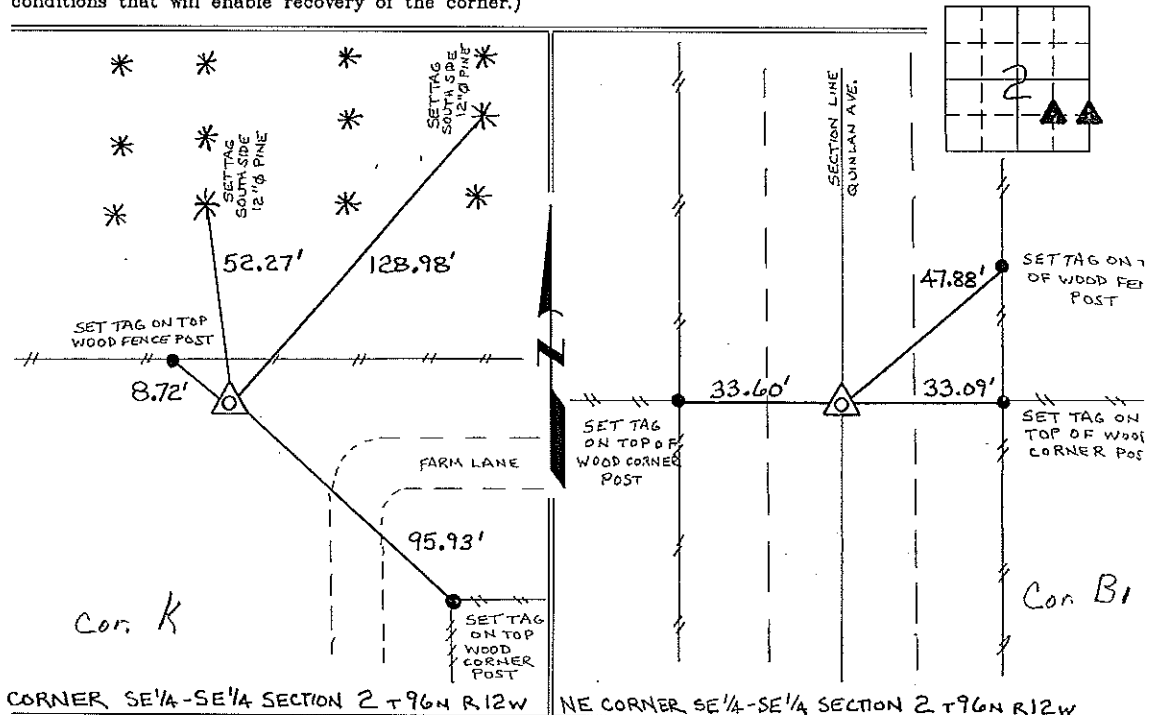
(Show reason for preparing this certificate, the evidence and detailed procedures used in establishing the corner positions and monumentation found or placed.)

Monument Description and Remarks: NW CORNER SE 1/4-SE 1/4 SECTION 2 T96N R12W: SET 1/2" Ø REBAR W/CAP 7060 AT THE INTERSECTION OF THE 1/4-1/4 SECTION LINES.

NE CORNER SE 1/4-SE 1/4 SECTION 2 T96N R12W: SET 1/2" Ø REBAR W/CAP 7060 EQUADISTANT AND ON LINE BETWEEN THE SE CORNER AND THE E 1/4 CORNER.

PLAN - VIEW

(Show a minimum of three reference ties to durable physical objects, relevant monuments and physical conditions that will enable recovery of the corner.)



I hereby certify that the survey work was completed and this certificate was prepared by me or under my direct personal supervision and that I am a duly registered land surveyor under the laws of the state of Iowa.

Signature: Lyle G. TeKippe  
Lyle G. TeKippe

Date: 5-24-96 Reg. No. 7080  
My Registration Renewal Date is December 31, 1998

Seal



List Corners to be Indexed			
Corners	Section	Twp.	Range
NW-SE-SE	2	96N	12W
Corner Y		2-96-12	
NE-SE-SE	2	96N	12W

Corner B1 2-96-12

*Placed in tie books 6/17/96*