

Section 3-96-11
As referred to in
Engr. Tie Book

Chickasaw Co. Recorder
Cindy Messersmith
Fee Book 2007-1487

07/20/2007 @0918AM
SCC SEC COR CERT
Book: Page: # Pages: 1
Total Fees: \$7.00

TEKIPPE ENGINEERING, P.C., 128 South Vine Street, West Union, Iowa 52175 Phone (563) 422-5131

UNITED STATES PUBLIC LAND SURVEY CORNER CERTIFICATE

OF

Land Survey Monuments situated in Section 2, Township 96 North, Range 12 West of the Fifth Principal Meridian, Chickasaw County, Iowa. Previously recorded in 1. Bk. 161, Pg. 122 2. Bk. 147, Pg. 468 in County Recorder's Office.

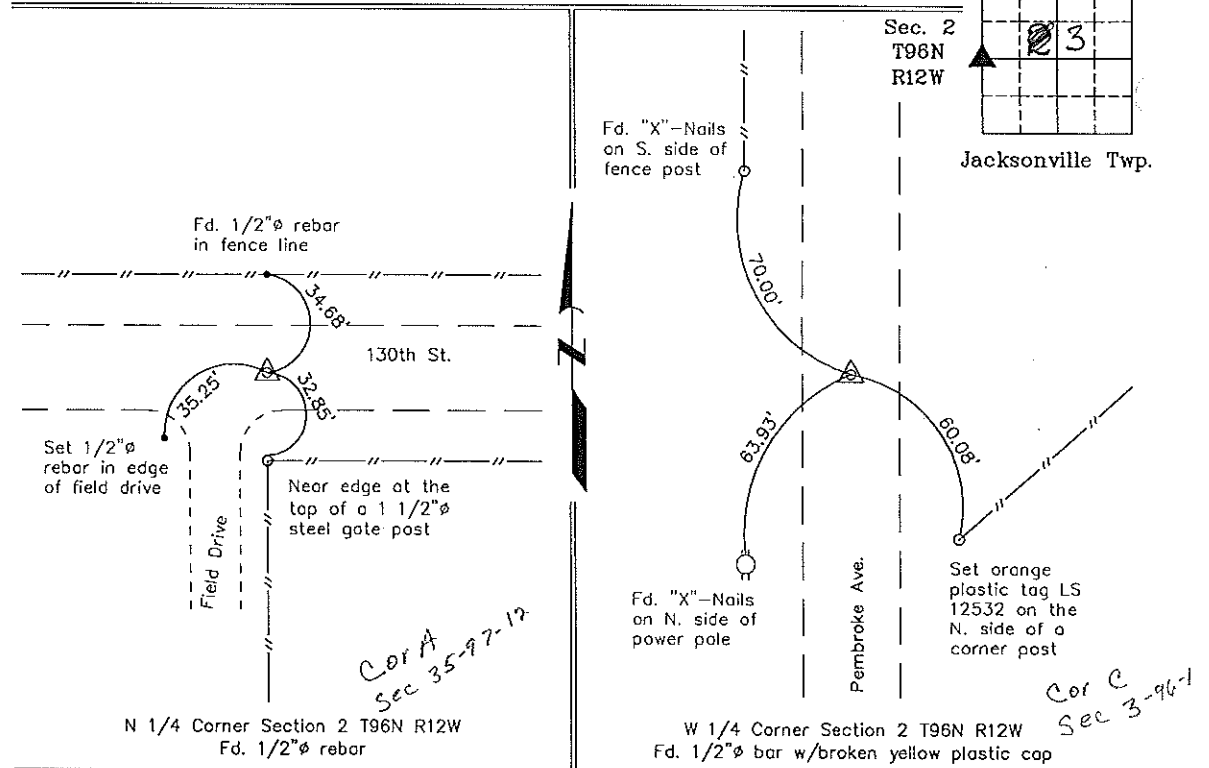
(book, page, document number, etc.)

(Show reason for preparing this certificate, the evidence and detailed procedures used in establishing the corner positions and monumentation found or placed.)

Monument Description and Remarks: 1. N 1/4 Corner Section 2 T96N R12W: Found 1/2" ø rebar, previously recorded in book 161, page 122. One tie was missing, set new tie.
2. W 1/4 Corner Section 2 T96N R12W: Found 1/2" ø bar with broken yellow plastic cap. Section Corner Monument is different than described on current Certificate and one recorded tie is gone. Set one new tie and remeasured others.

PLAN - VIEW

(Show a minimum of three reference ties to durable physical objects, relevant monuments and physical conditions that will enable recovery of the corner.)



I hereby certify that this land surveying document was prepared and the related survey work was performed by me or under my direct personal supervision and that I am a duly licensed Land Surveyor under the laws of the State of Iowa.

Gary L. Casady 7-18-07
Gary L. Casady Date
License number 12532
My license renewal date is December 31, 2008.
Sheets covered by this seal: Individual

List Corners to be Indexed			
Corners	Section	Twp.	Range
N 1/4	2	96N	12W
W 1/4	2	96N	12W

Project Number 07117.LS
FB. 46M, PGS. 38-41

X:\Section Corners\Sec. 0212-96-12ck.dwg

Section 35-96-12
 As referred to in
 Engr. Tie Book

TeKIPPE ENGINEERING, P.C., 128 South Vine Street, West Union, Iowa 52175 Phone (319) 422-5131

UNITED STATES PUBLIC LAND SURVEY CORNER CERTIFICATE

OF 35

Land Survey Monuments situated in Section 2, Township 96 North, Range 12 West, of the Fifth Principal Meridian, CHICKASAW County, Iowa. Previously recorded in NONE in County Recorder's Office.

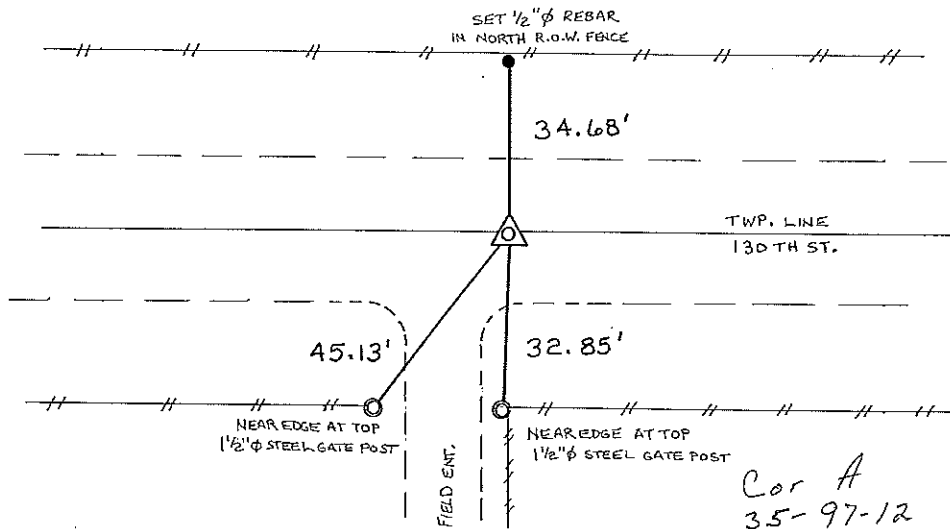
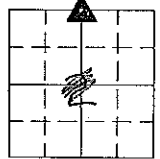
(book, page, document number, etc.)

(Show reason for preparing this certificate, the evidence and detailed procedures used in establishing the corner positions and monumentation found or placed.)

Monument Description and Remarks: N 1/4 CORNER SECTION 2 T 96 N R 12 W;
FOUND 1/2" Ø REBAR FROM TIES OBTAINED FROM THE CHICKASAW COUNTY ENGINEERS
OFFICE, IN FIELD BOOK "JACKSONVILLE CORNER TIES".

PLAN - VIEW

(Show a minimum of three reference ties to durable physical objects, relevant monuments and physical conditions that will enable recovery of the corner.)



Cor A
 35-97-12

I hereby certify that the survey work was completed and this certificate was prepared by me or under my direct personal supervision and that I am a duly registered land surveyor under the laws of the state of Iowa.

Signature: Lyle G. TeKippe
 Lyle G. TeKippe

Date: 5-24-96 Reg. No. 7080
 My Registration Renewal Date is December 31, 1998

Seal



List Corners to be Indexed			
Corners	Section	Twp.	Range
N 1/4	2	96 N	12 W
Corner A 3597-12			

Placed in Tie Book

161-122

"County Engineers Copy"