

Corner B  
Section 34-97-12  
As referred to in  
Engr. Title Book

Chickasaw Co. Recorder  
Cindy Messersmith  
Fee Book 2007-1485  
07/20/2007 @0913AM  
SEC COR CERT  
Book: Page: # Pages: 1  
Total Fees: \$7.00

TEKIPPE ENGINEERING, P.C., 128 South Vine Street, West Union, Iowa 52175 Phone (563) 422-6131

UNITED STATES PUBLIC LAND SURVEY CORNER CERTIFICATE

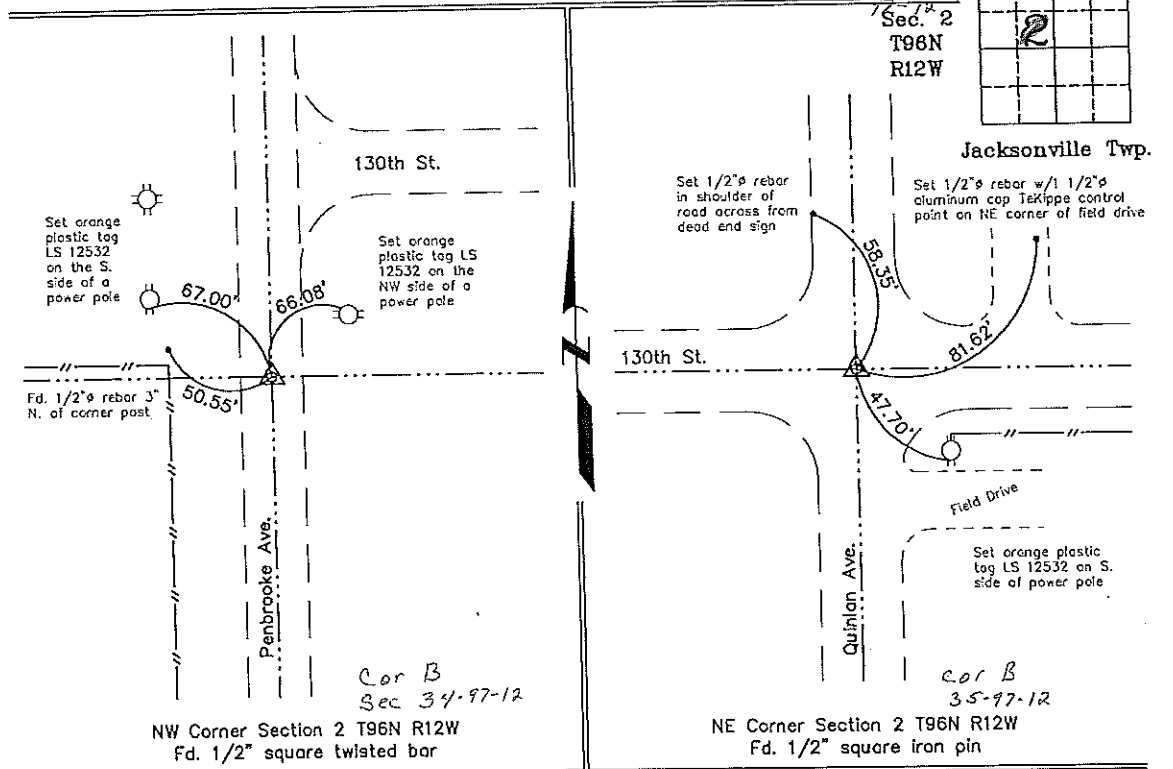
OF  
Land Survey Monuments situated in Section 2, Township 96 North, Range 12 West of the Fifth Principal Meridian, Chickasaw County, Iowa.  
Previously recorded in none in County Recorder's Office.  
(book, page, document number, etc.)

(Show reason for preparing this certificate, the evidence and detailed procedures used in establishing the corner positions and monumentation found or placed.)

Monument Description and Remarks: NW Corner Section 2 T96N R12W: Found 1/2" square twisted bar, set two new reference ties.  
NE Corner Section 2 T96N R12W: Found 1/2" square iron pin, set three new reference ties as shown below.

PLAN - VIEW

(Show a minimum of three reference ties to durable physical objects, relevant monuments and physical conditions that will enable recovery of the corner.)



I hereby certify that this land surveying document was prepared and the related survey work was performed by me or under my direct personal supervision and that I am a duly licensed Land Surveyor under the laws of the State of Iowa.  
*Gary L. Casady* 7-19-07  
Gary L. Casady Date  
License number 12532  
My license renewal date is December 31, 2008.  
Sheets covered by this seal: Individual

List Corners to be Indexed			
Corners	Section	Twp.	Range
NW	2	96N	12W
NE	2	96N	12W

Project Number 07117.LS  
FB 48M PCS 38-41  
X\Section Corners\Sec. 02\2-96-12ea.dwg