

Section 24-96-13
As referred to in
Engr. Title Book

UNITED STATES PUBLIC LAND SURVEY CORNER CERTIFICATE

OF 24

Land Survey Monuments situated in Section 30, Township 96 North, Range 12 West, of the Fifth Principal Meridian, CHICKASAW County, Iowa. Previously recorded in NONE in County Recorder's Office.

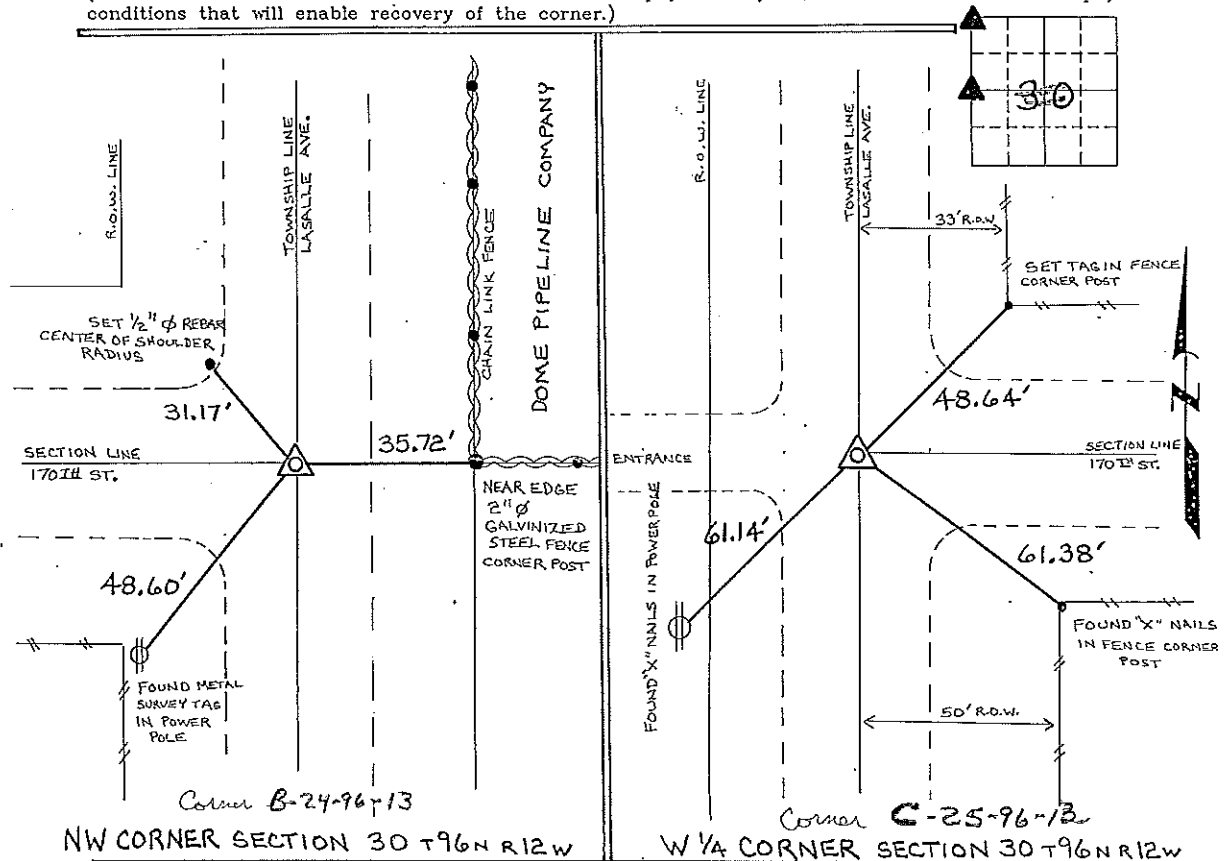
(book, page, document number, etc.)

(Show reason for preparing this certificate, the evidence and detailed procedures used in establishing the corner positions and monumentation found or placed.)

Monument Description and Remarks: NW CORNER SECTION 30 T96N R12W: FOUND 3/4" SQUARE IRON BAR AT THE INTERSECTION OF LASALLE AVE. AND 170TH STREET - WEST OF TOWNSHIP LINE.
W 1/4 CORNER SECTION 30 T96N R12W: FOUND 3/4" GAS PIPE AT THE INTERSECTION OF LASALLE AVE. AND 170TH STREET EAST OF TOWNSHIP LINE, CHECKED WITH ONE TIE OBTAINED FROM THE CHICKASAW COUNTY ENGINEERS OFFICE.

PLAN - VIEW

(Show a minimum of three reference ties to durable physical objects, relevant monuments and physical conditions that will enable recovery of the corner.)

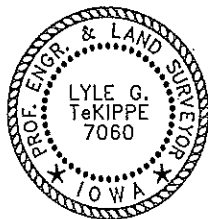


I hereby certify that the survey work was completed and this certificate was prepared by me or under my direct personal supervision and that I am a duly registered land surveyor under the laws of the state of Iowa.

Signature: Lyle G. TeKippe
Lyle G. TeKippe

Date: 10-9-95 Reg. No. 7060
My Registration Renewal Date is December 31, 1996

Seal



Corners	Section	Twp.	Range
NW	30	96N	12W
Corner B-	24-96-13		
W 1/4	30	96N	12W
Corner C	25-96-13		

Placed in title
Book 10/20/95
JPM