



Prepared by & Return to: Herold - Reicks Surveying, 10 East Main Street, New Hampton, IA 50659, Ph. 641-394-2725

United States Public Land Survey Corner Certificate

Land Survey Monument situated in
 Section 31, Township 96 North, Range 12 West of the Fifth Principal Meridian, Chickasaw County, Iowa.
 On file in Book 146, Page 110 in the County Recorder's office.

This certificate is being prepared in compliance with Iowa Code Chapter 355.11 because:

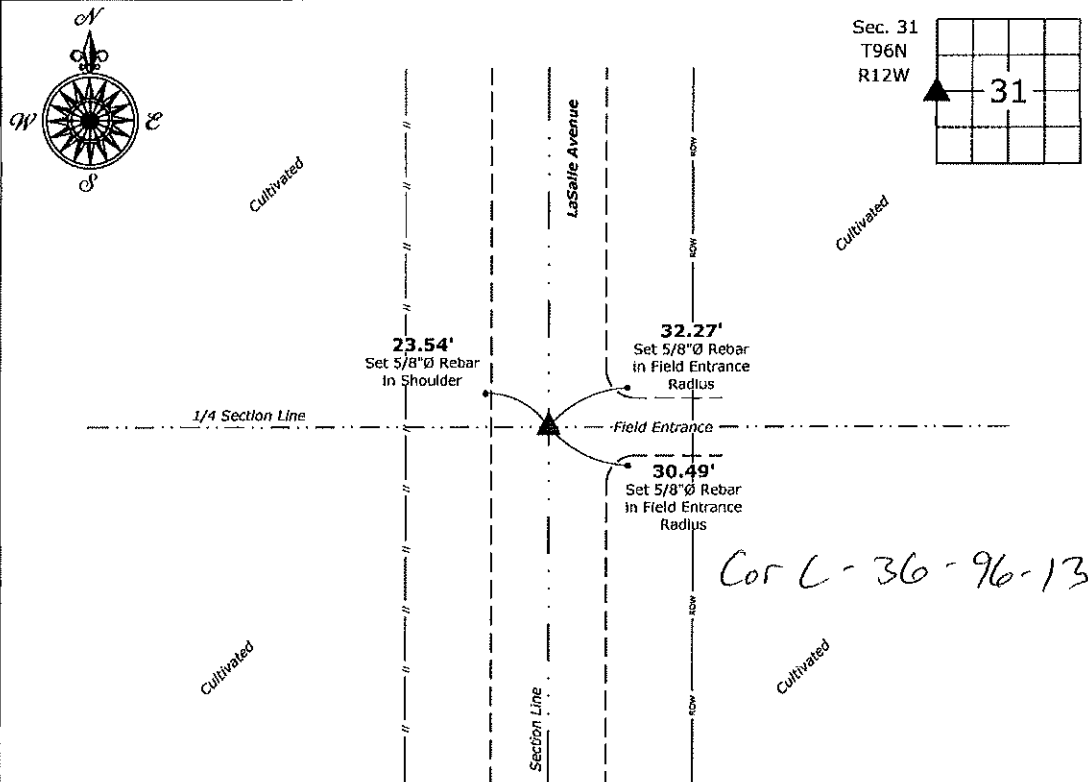
- There is no certificate on file for this corner.
- There are no longer three valid ties of record.
- There are changes to reference ties of record.
- There is change of monumentation of record.
- To clarify description of record monument (ties).

Monument Description and Remarks:

West 1/4 Corner: Found 1/2" Square Twisted Bar with information obtained from the previously recorded Section Corner Certificate and from a Survey and Plat prepared by Lindsey Erdman, dated April 18, 2005, recorded in Document #2005-0708, on file in the County Recorder's Office.

Plan View

(Show a minimum of three reference ties to durable physical objects, relevant monuments and physical conditions that will enable recovery of the corner.)



West 1/4 Corner of Section 31-96-12
 Fd. 1/2" Square Twisted Bar



I hereby certify that this land surveying document was prepared and the related survey work was performed by me or under my direct personal supervision and that I am a duly licensed Land Surveyor under the laws of the State of Iowa.
Kirk D. Reicks 10-5-2020
 Kirk D. Reicks Date:
 License number 19211
 My license renewal date is December 31, 2020.
 Sheets covered by this seal: Individual sheet only

List Corner to be Indexed			
Corner	Section	Twp.	Range
W 1/4	31	96	12
Project Number: 2020-107			
FB: Chickasaw 10, Pgs. 31-32			

File: S:_Projects - NHO\County Control Systems - NHO\CHICKASAW\CHICK-21\CHICK-21 - 2020.dwg, 10/5/2020 11:11:48 AM

X
C
M
S

DOCUMENT No. **00861**

FILED FOR RECORD THE **6th** DAY OF **December**, 19 **90** AT **9:22**

STATE OF IOWA, CHICKASAW COUNTY,

RECORDING FEE \$ **5.00**

O'CLOCK **A.M.** BOOK **146 Deeds** PAGE **110**

MARY C. MURRAY

Recorder

TRANSFER FEE \$

Deputy

UNITED STATES PUBLIC LAND SURVEY CORNER CERTIFICATE

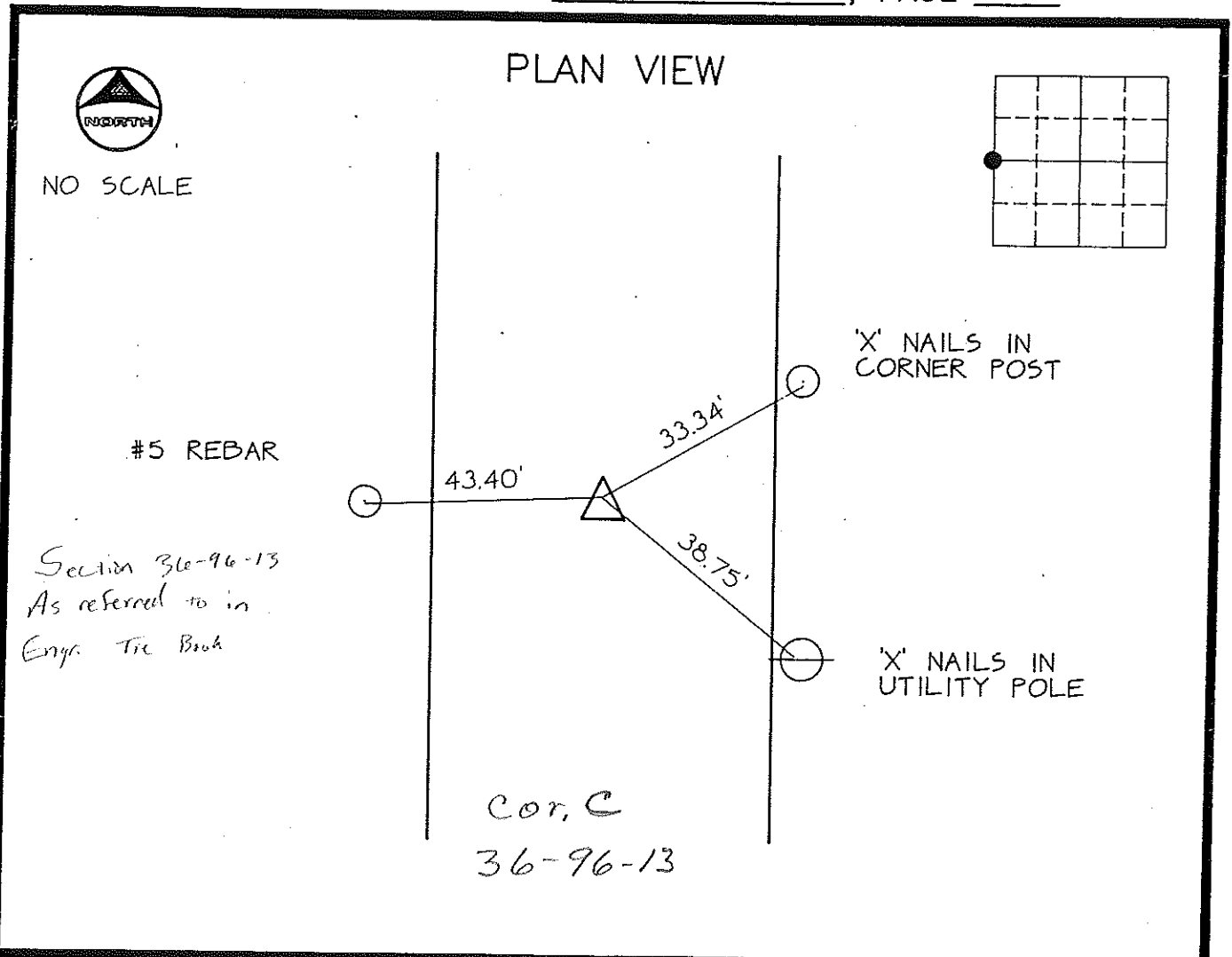
SECTION **31**, TOWNSHIP **96**, RANGE **12** OF THE 5TH. P.M.
IN CHICKASAW COUNTY, IOWA

CORNER: NW COR. SW1/4 A.K.A. W1/4 COR.

DESCRIPTION AND REMARKS: FOUND IRON PIN

*Placed in Tie Book
11/7/90*

PREVIOUSLY RECORDED IN BOOK _____, PAGE _____



CERTIFICATION:
I HEREBY CERTIFY THAT THIS MAP, PLAN, OR SURVEY WAS MADE BY ME OR UNDER MY DIRECT PERSONAL SUPERVISION AND THAT I AM A DULY REGISTERED LAND SURVEYOR UNDER THE LAWS OF THE STATE OF IOWA.

Thomas V. Craft DATE: 11/30/90

THOMAS V. CRAFT REG. L.S. NO. 7648



INDEXING ALTERNATIVES			
CORNER	SECTION	TWP	RANGE
E1/4 COR.	36	96	13

BLE/213700