



Prepared by: Kyle A. Johnson Address: 1900 MEDICAL ARTS AVE S, SUITE 100 SARTELL MN Phone: 1-888-937-5150

UNITED STATES PUBLIC LAND SURVEY CORNER CERTIFICATE FOR

Land survey monuments situated in Section 31, Township 96 NORTH
 Range 12 WEST, of the Fifth Principal Meridian, CHICKASAW County, Iowa.

Previously Recorded in _____ in County Recorder's Office.

(Show reason for preparing this certificate, the evidence and detailed procedures used in establishing the corner positions and monumentation found or placed.)

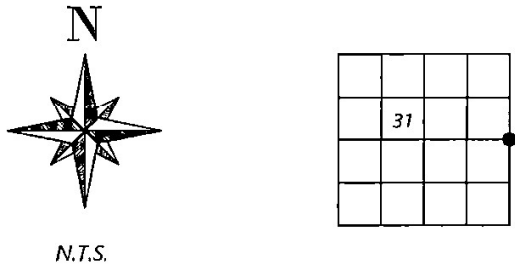
MONUMENT DESCRIPTION AND REMARKS:

THIS DOCUMENT IS INTENDED TO REPLACE INSTRUMENT #2022-1883 AS THERE WAS AN ERROR IN THE CORNER IDENTIFICATION.

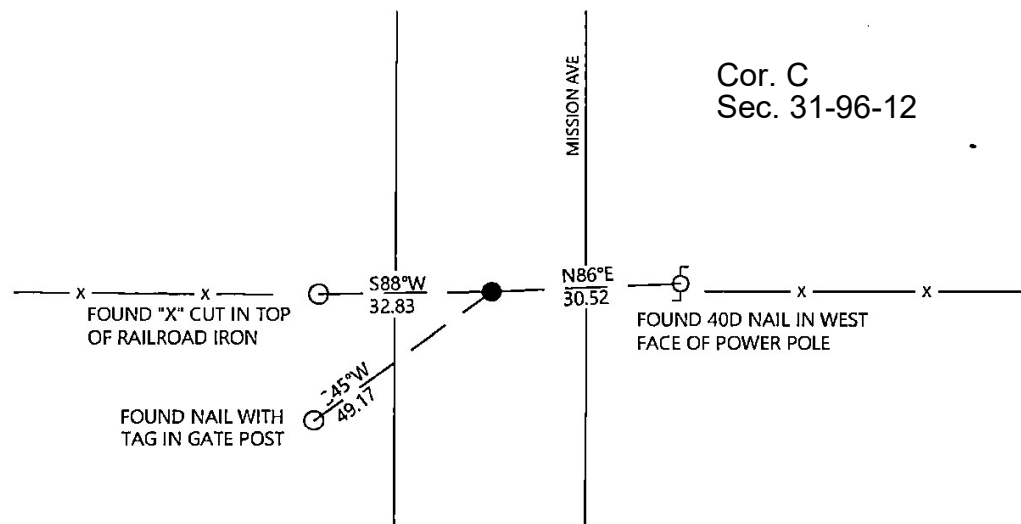
EAST QUARTER: Westwood Professional Services searched the area and found 3 ties but no monument. Set 1/2" rebar with orange LS 25725 cap per 2014 Reicks survey. Position agrees with ties from 2010 record. Filing corner record as there is change of monumentation of record.

PLAN - VIEW

(Show a minimum of three reference ties to durable physical objects, relevant monuments and physical conditions that will enable recovery of the corner.)



EAST QUARTER



SEAL 	I hereby certify that this land surveying document was prepared and the related survey work was performed by me or under my direct personal supervision and that I am a duly licensed Land Surveyor under the laws of the state of Iowa.	Corners to be Indexed Corners Section Twp. Range EQ 31 96 12
	Signature: <u>Kyle Johnson</u> Date: <u>01/03/2023</u> Typed/Printed Name: <u>Kyle A. Johnson</u> License Number: <u>25725</u> My license renewal date is December 31, <u>2024</u> Pages or sheets covered by this seal: <u>THIS SHEET</u>	