



Prepared by & Return to: Herold - Reicks Surveying, 10 East Main Street, New Hampton, IA 50659, Ph. 641-394-2725

United States Public Land Survey Corner Certificate

Land Survey Monument situated in
 Section 31, Township 96 North, Range 12 West of the Fifth Principal Meridian, Chickasaw County, Iowa.
 On file in **Book 156, Page 463** in the County Recorder's office.

This certificate is being prepared in compliance with Iowa Code Chapter 355.11 because:



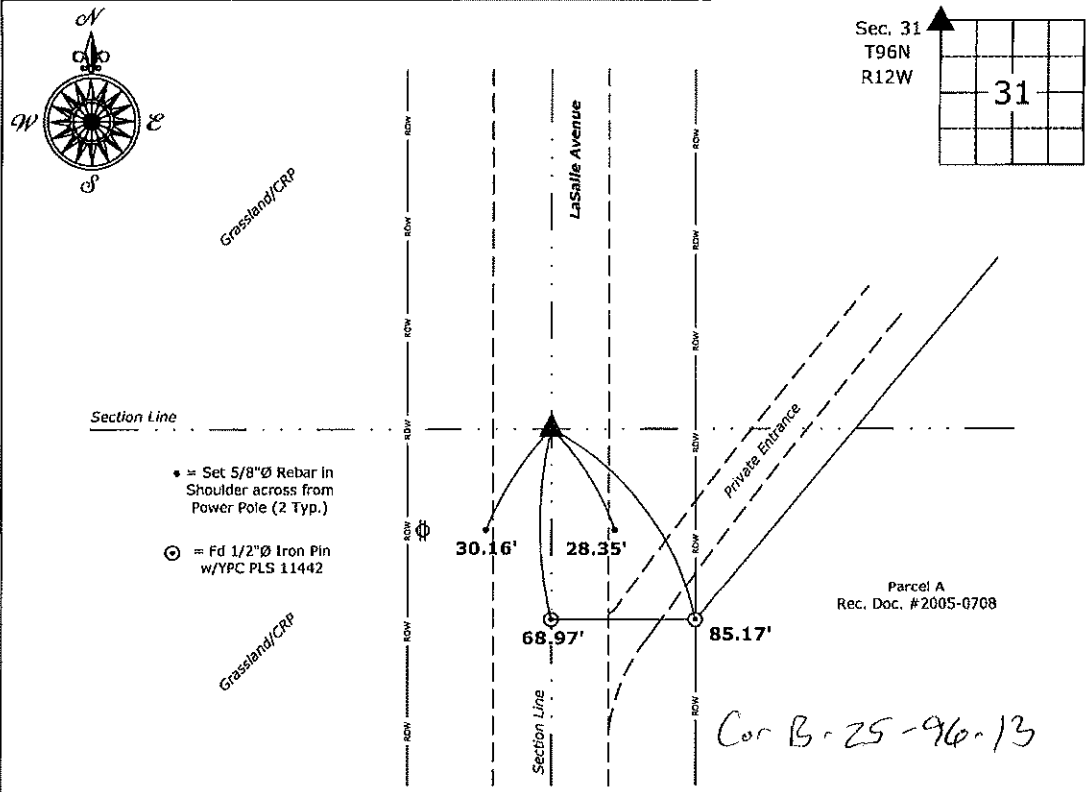
- There is no certificate on file for this corner.
- There are no longer three valid ties of record.
- There are changes to reference ties of record.
- There is change of monumentation of record.
- To clarify description of record monument (ties).

Monument Description and Remarks:

Northwest Corner: Found 1/2"Ø Rebar with Yellow Plastic Cap PLS 11442 with information obtained from the previously recorded Section Corner Certificate.

Plan View

(Show a minimum of three reference ties to durable physical objects, relevant monuments and physical conditions that will enable recovery of the corner.)



Northwest Corner of Section 31-96-12
 Fd. 1/2"Ø Rebar with Yellow Plastic Cap 11442



I hereby certify that this land surveying document was prepared and the related survey work was performed by me or under my direct personal supervision and that I am a duly licensed Land Surveyor under the laws of the State of Iowa.

Kirk D. Reicks 10-5-2020
 Kirk D. Reicks Date:
 License number 19211
 My license renewal date is December 31, 2020.
 Sheets covered by this seal: Individual sheet only

List Corner to be Indexed			
Corner	Section	Twp.	Range
NW	31	96	12
Project Number: 2020-107			
FB: Chickasaw 10, Pgs. 31-32			

File: S:\Projects - NHO\County Control Systems - NHO\CHICKASAW\CHICK-21\CHICK-21 - 2020.dwg, 10/5/2020 11:11:27 AM

UNITED STATES PUBLIC LAND SURVEY CORNER CERTIFICATE

OF

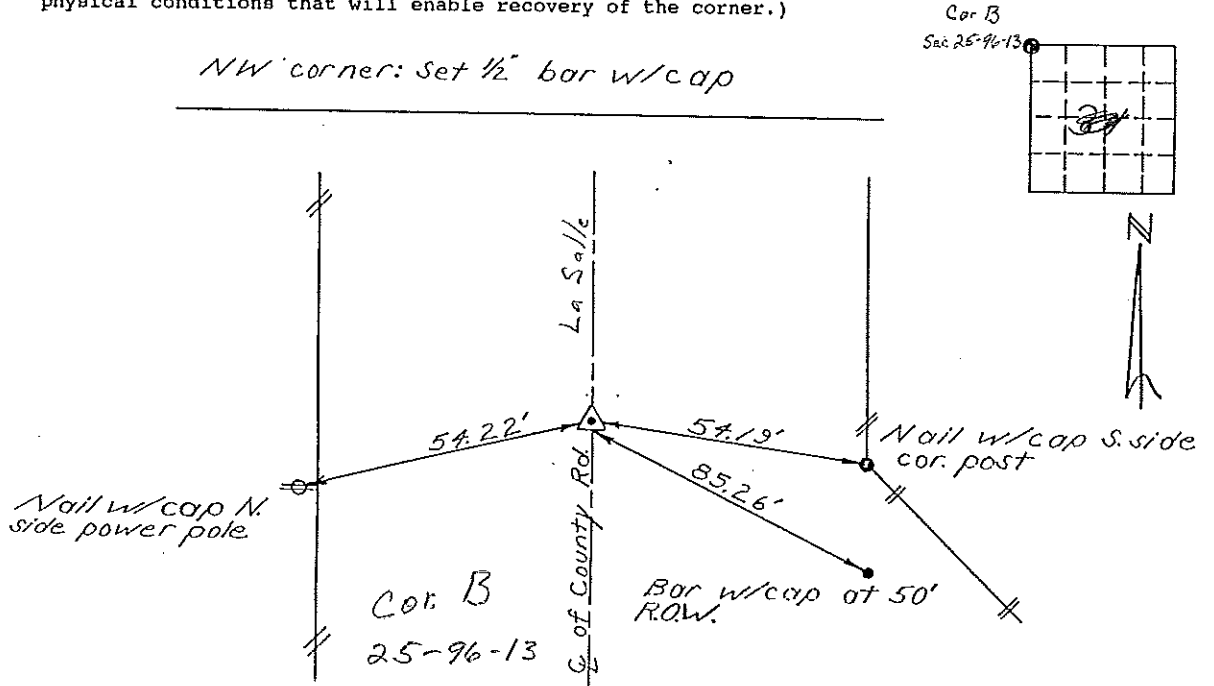
Land Survey Monuments situated in Section 25, Township 96 N, Range 12 W, of the Fifth Principal Meridian, Chickasaw County, Iowa. Previously recorded in does not apply in County Recorders Office. (book, page, document number, etc.)

(Show reason for preparing this certificate, the evidence and detailed procedures used in establishing the corner positions and monumentation found or placed.)

Monument Description and Remarks: see below

PLAN - VIEW

(Show a minimum of three reference ties to durable physical objects, relevant monuments and physical conditions that will enable recovery of the corner.)



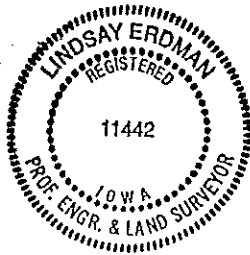
I hereby certify that the survey work was completed and this certificate was prepared by me or under by direct personal supervision and that I am a duly registered land surveyor under the laws of the State of Iowa.

Signature: Lindsay Erdman
Lindsay Erdman, P.E. & L.S.

Date: 9-7-94 Reg. No. 11442

My license will be renewed January 1, 1995.

SEAL



Corners	List Corners to be Indexed Section	Twp.	Range.
NW	31	96	12

XX DOCUMENT No. 01167
RECORDING FEE \$... 6.00
TRANSFER FEE \$...

FILED FOR RECORD THE 6th DAY OF January 1995 AT 9:37 O'CLOCK A.M. BOOK 156 PAGE 463

#94122 Boeding
STATE OF IOWA, CHICKASAW COUNTY
By: Leitha N. Ross Recorder
LEITHA N. ROSS