

Herold - Reicks Surveying, 18 East Main Street, New Hampton, IA 50659, Ph. 641-394-2725, Fax. 641-394-2710

**UNITED STATES PUBLIC LAND SURVEY CORNER CERTIFICATE**  
 30

Land Survey Monuments situated in Section 32, Township 96 North, Range 12 West of the Fifth Principal Meridian, Chickasaw County, Iowa. Previously recorded in 1.) Doc. #2002-2529, 2.) Bk. 163, Pg. 301 in the County Recorder's office.

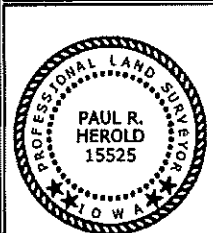
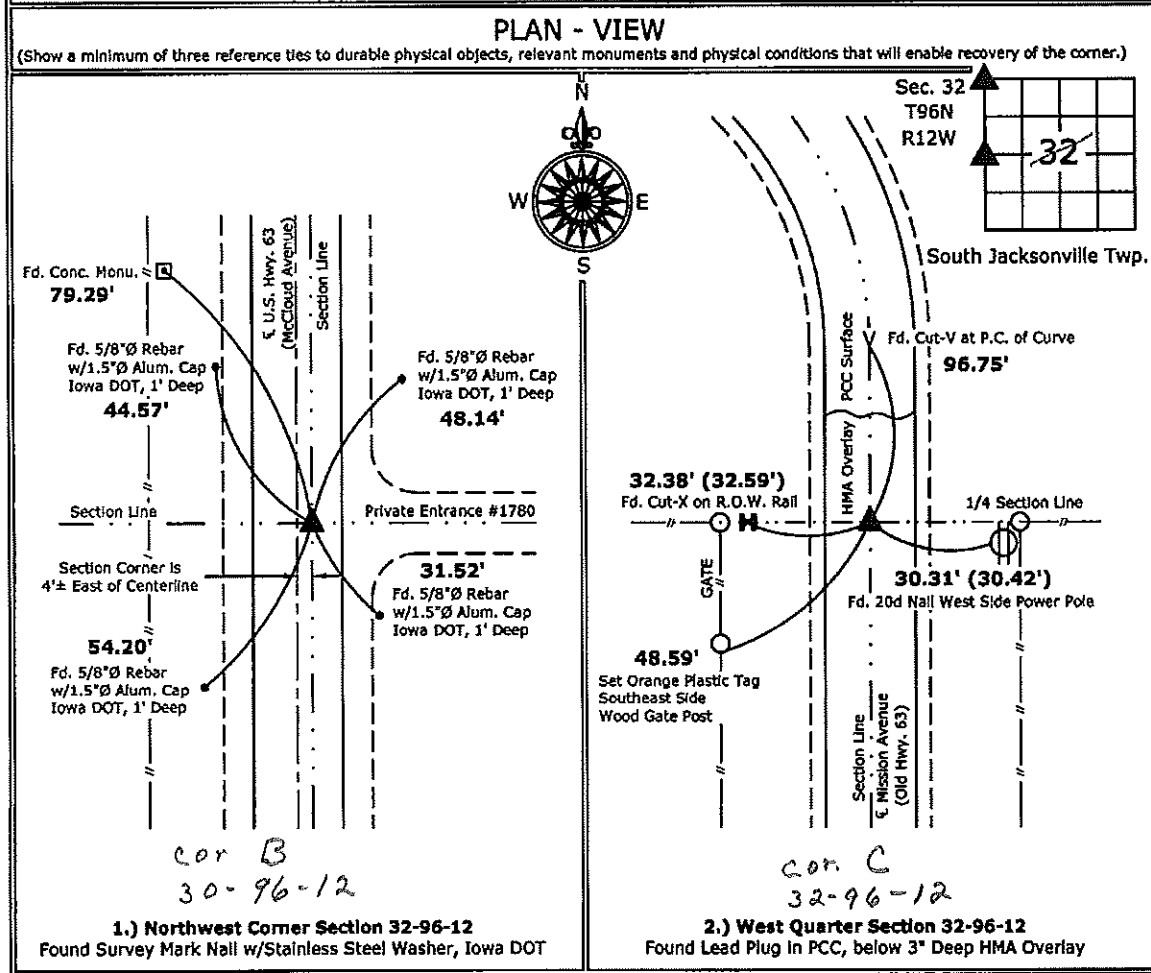
This certificate is being prepared in compliance with Iowa Code Chapter 355.11 because:

- There is no certificate on file for this corner.
- 2  There are no longer three valid ties of record.
- There are changes to reference ties of record.
- 1  There is change of monumentation of record.
- To clarify description of record monument (ties).

Monument Description and Remarks:

**1.) Northwest Corner:** Found Survey Mark Nail w/Stainless Steel Washer, Iowa DOT, from previous Section Corner Certificate.

**2.) West Quarter Section:** Found Lead Plug In PCC, below 3" Deep HMA Overlay, from previous Section Corner Certificate.



I hereby certify that this land surveying document was prepared and the related survey work was performed by me or under my direct personal supervision and that I am a duly licensed Land Surveyor under the laws of the State of Iowa.

*Paul R. Herold* 12-29-10  
 Paul R. Herold Date:  
 License number 15525  
 My license renewal date is December 31, 2010.  
 Sheets covered by this seal: Individual sheet only

| List Corners to be Indexed |         |      |       |
|----------------------------|---------|------|-------|
| Corners                    | Section | Twp. | Range |
| NW                         | 32      | 96   | 12    |
| W 1/4                      | 32      | 96   | 12    |

Project Number: 2010-172  
 FB: Chickasaw County 2, Pgs. 58-59

File: S:\\_Projects\2010-172\dwg\2010-172.dwg, 12/29/2010 11:47:15 AM

2002 OCT 22 AM 9 19

CINDY WESSERSMITH  
COUNTY RECORDER

TeKIPPE ENGINEERING, P.C., 128 South Vine Street, West Union, Iowa 52175 Phone (563) 422-5131

UNITED STATES PUBLIC LAND SURVEY CORNER CERTIFICATE

OF

Land Survey Monuments situated in Section 29, Township 96 North, Range 12 West of the Fifth Principal Meridian, CHICKASAW County, Iowa. Previously recorded in none in County Recorder's Office. (book, page, document number, etc.)

(Show reason for preparing this certificate, the evidence and detailed procedures used in establishing the corner positions and monumentation found or placed.)

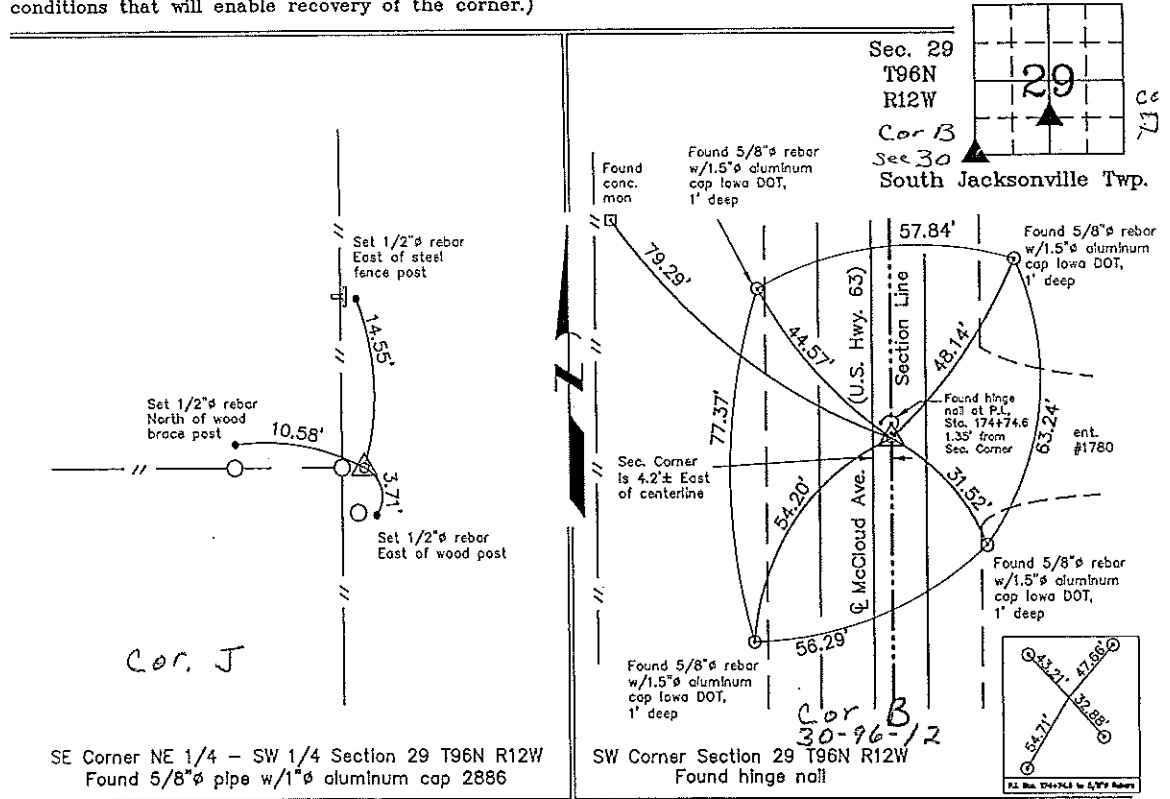
Monument Description and Remarks: SE Corner NE 1/4 - SW 1/4 Section 29 T96N R12W: Found 5/8"Ø rebar w/1"Ø aluminum cap 2886 with information obtained from a Survey and Plat made by L. P. Erdman recorded in the Chickasaw County Recorder's Office January 23, 1981 in Deeds Book 123, Page 274.

SW Corner Section 29 T96N R12W: Found hinge nail with information obtained from the as-built plans for Iowa State Highway Commission Project F-63-8(1)-20-19.

PLAN - VIEW

Project Number 02239.1S  
FB. 46J PG. 41-42

(Show a minimum of three reference ties to durable physical objects, relevant monuments and physical conditions that will enable recovery of the corner.)



I hereby certify that this land surveying document was prepared and the related survey work was performed by me or under my direct personal supervision and that I am a duly licensed Land Surveyor under the laws of the State of Iowa.

*Paul R. Herold* 10-18-02  
Paul R. Herold Date  
License number 15525  
My license renewal date is December 31, 2002.  
Sheets covered by this seal: Individual

| List Corners to be Indexed |         |      |       |
|----------------------------|---------|------|-------|
| Corners                    | Section | Twp. | Range |
| SE-NE-SW                   | 29      | 96N  | 12W   |
| SW                         | 29      | 96N  | 12W   |

Filed 11-5-02

X:\Section Corners\Sec. 29\29-96-12ru.dwg

County Engineers