

Herold - Recks Surveying, 19 East Main Street, New Hampton, IA 50659, Ph. 641-394-2725, Fax. 641-394-2718

UNITED STATES PUBLIC LAND SURVEY CORNER CERTIFICATE

Land Survey Monuments situated in Section 32, Township 96 North, Range 12 West of the Fifth Principal Meridian, Chickasaw County, Iowa. Both previously not recorded in the County Recorder's office.

This certificate is being prepared in compliance with Iowa Code Chapter 355.11 because:

- There is no certificates on file for these corners.
- There are no longer three valid ties of record.
- There are changes to reference ties of record.
- There is change of monumentation of record.
- To clarify description of record monument (ties).

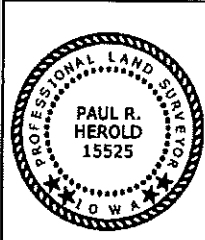
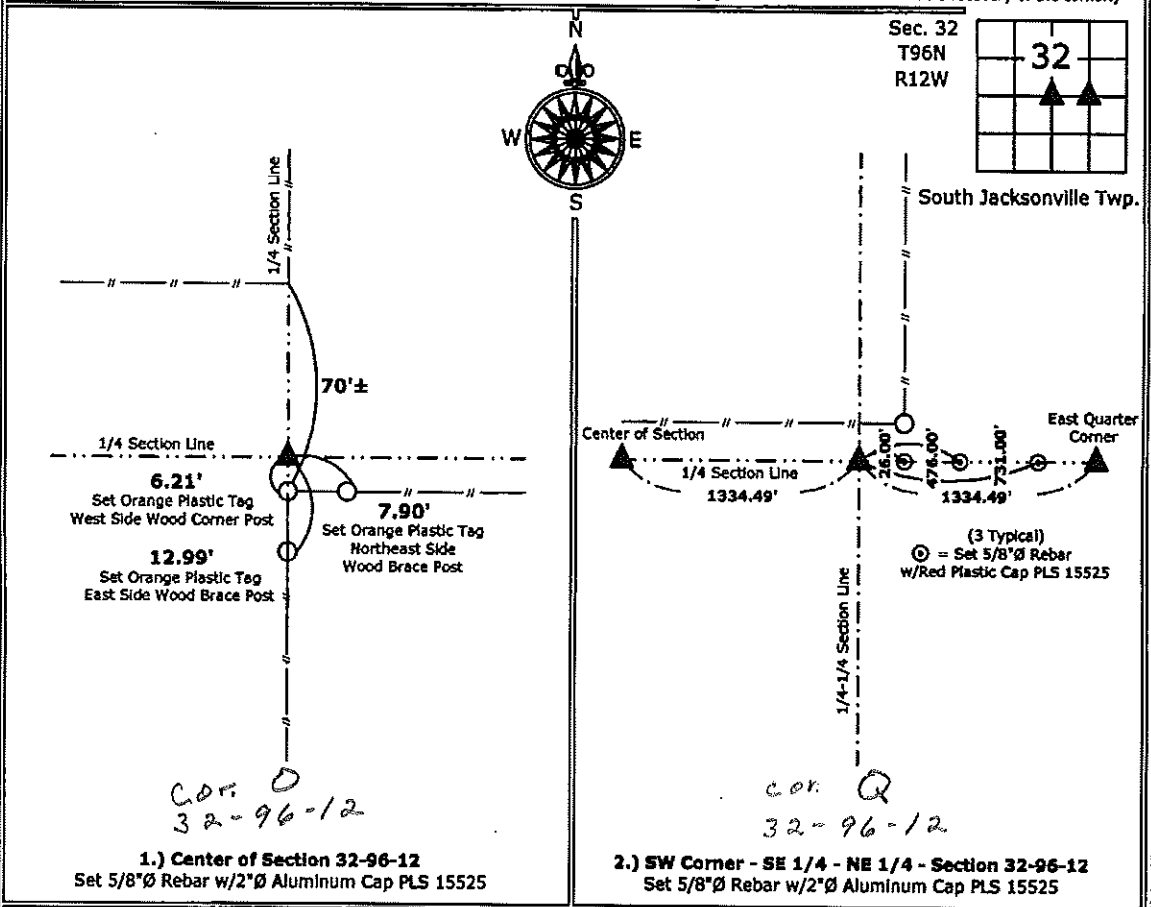
Monument Description and Remarks:

1.) **Center of Section:** Set 5/8"Ø Rebar w/2"Ø Aluminum Cap PLS 15525 at the intersection of the Quarter Section lines.

2.) **Southwest Corner - SE 1/4 - NE 1/4:** Set 5/8"Ø Rebar w/2"Ø Aluminum Cap PLS 15525 equidistant and online between the East Quarter Corner and the Center of Section.

PLAN - VIEW

(Show a minimum of three reference ties to durable physical objects, relevant monuments and physical conditions that will enable recovery of the corner.)



I hereby certify that this land surveying document was prepared and the related survey work was performed by me or under my direct personal supervision and that I am a duly licensed Land Surveyor under the laws of the State of Iowa.

Paul R. Herold 12-29-10
 Paul R. Herold Date:
 License number 15525
 My license renewal date is December 31, 2010.
 Sheets covered by this seal: Individual sheet only

List Corners to be Indexed			
Corners	Section	Twp.	Range
CTR	32	96	12
SW-SE-NE	32	96	12

Project Number: 2010-172
 FB: Chickasaw County 2, Pgs. 58-59