

Chickasaw Co. Recorder  
 Cindy Messersmith  
**Fee Book 2008-0712**  
 04/18/2008 @02:15PM  
 SCC SEC COR CERT # Pages: 1  
 Book: Page: \$7.00  
 Total Fees:

*Section 28-96-12  
 As referred to in  
 Eng. The Book*

*Herold - Reicks Surveying, 25 1/2 East Main Street, Suite 204, New Hampton, IA 50659, Ph. 641-394-2725*

**UNITED STATES PUBLIC LAND SURVEY CORNER CERTIFICATE**

Land Survey Monuments situated in:

Section 33, Township 96 North, Range 12 West of the Fifth Principal Meridian,  
 Chickasaw County, Iowa. Previously recorded in 1.) Book 159, Pg. 193  
2.) Book 159, Pg. 194

In County Recorder's Office.

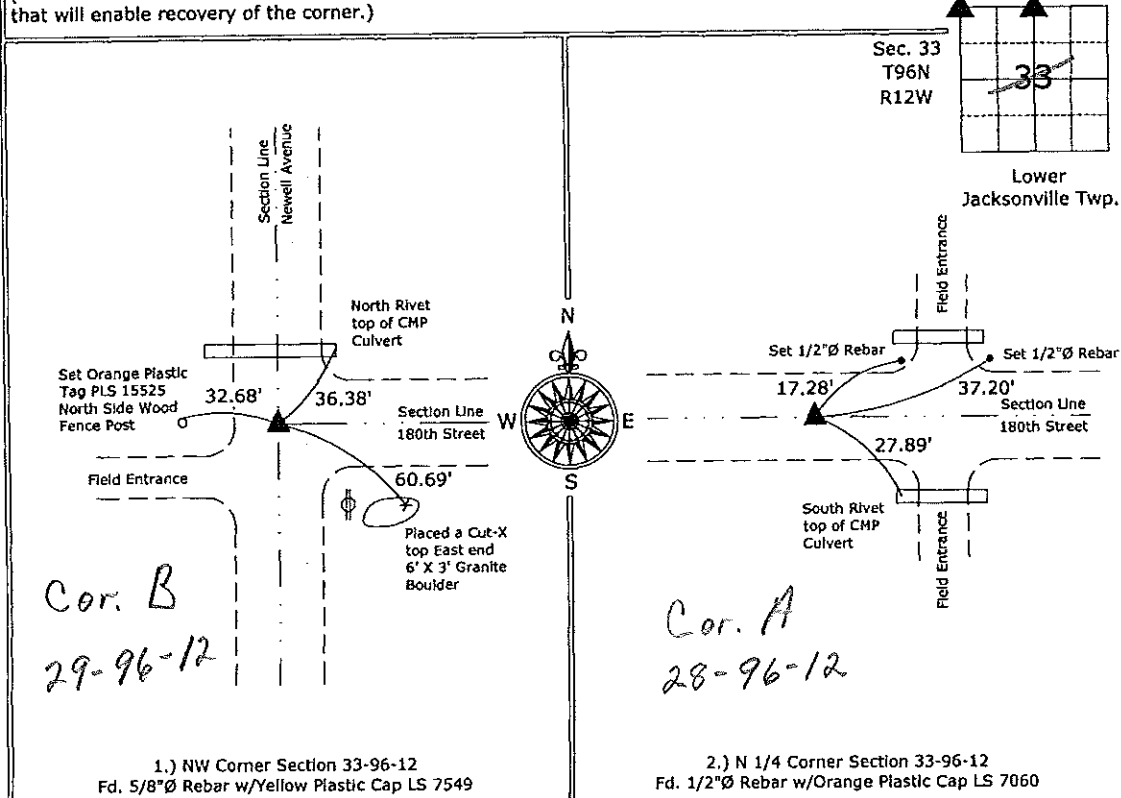
(Show for preparing this certificate, the evidence and detailed procedures used in establishing the corner positions and monumentation found or placed.)

Monument Description and Remarks:

- 1.) NW Corner Section 33-96-12: Fd. 5/8"Ø Rebar w/Yellow Plastic Cap LS 7549 from information on the previous Section Corner Certificate, 2 of the ties were missing and the remaining tie is unreliable, added 3 new ties to update the corner.
- 2.) N 1/4 Corner Section 33-96-12: Fd. 1/2"Ø Rebar w/Orange Plastic Cap LS 7060 from information on the previous Section Corner Certificate, 1 tie was missing and one of the remaining ties is unreliable, added 2 new ties to update the corner.

**PLAN - VIEW**

(Show a minimum of three reference ties to durable physical objects, relevant monuments and physical conditions that will enable recovery of the corner.)



I hereby certify that this land surveying document was prepared and the related survey work was performed by me or under my direct personal supervision and that I am a duly licensed Land Surveyor under the laws of the State of Iowa.

*Paul R. Herold* 4-18-08  
 Paul R. Herold Date:  
 License number 15525  
 My license renewal date is December 31, 2008.  
 Sheets covered by this seal: Individual sheet only

List Corners to be Indexed			
Corners	Section	Twp.	Range
NW	33	96	12
N 1/4	33	96	12

Project Number: 2008-034  
 FB: Chickasaw County 1, Pgs. 65-66

File: S:\Projects\2008\2008-034\dwg\2008-034.dwg, 4/18/2008 9:57:37 AM

**UNITED STATES PUBLIC LAND SURVEY CORNER CERTIFICATE**

OF

Land Survey Monuments situated in Section 28, Township 96 North, Range 12 West, of the Fifth Principal Meridian, Chickasaw County, Iowa. Previously recorded in None in County Recorder's Office.  
(book, page, document number, etc.)

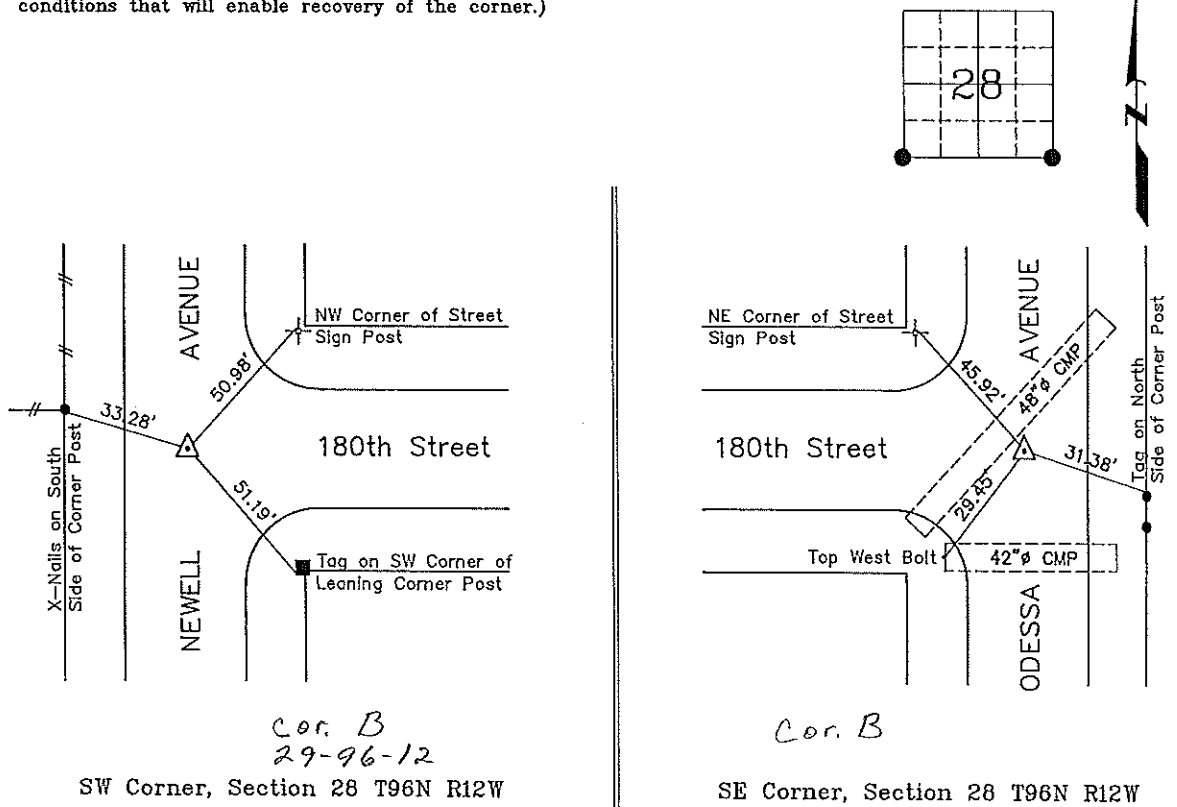
(Show reason for preparing this certificate, the evidence and detailed procedures used in establishing the corner positions and monumentation found or placed.)

Monument Description and Remarks: SW Corner, Section 28 T96N R12W: Found 1/2"φ rebar with cap #7549 which was not previously recorded.

SE Corner, Section 28 T96N R12W: Found 1" square iron pin which was not previously recorded.

**PLAN - VIEW**

(Show a minimum of three reference ties to durable physical objects, relevant monuments and physical conditions that will enable recovery of the corner.)

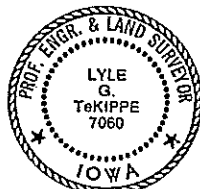


I hereby certify that the survey work was completed and this certificate was prepared by me or under my direct personal supervision and that I am a duly registered land surveyor under the laws of the state of Iowa.

Signature: Lyle G. TeKippe  
 Lyle G. TeKippe

Date: 10-27-95 Reg. No. 7060  
 My Registration Renewal Date is December 31, 1996.

Seal



List Corners to be Indexed			
Corners	Section	Twp.	Range
SW	28	96N	12W
<i>Cor B</i>	<i>29-96-12</i>		
SE	28	96N	12W
<i>Cor B</i>	<i>28-96-12</i>		

*Placed on the Book 11/15/95*