

UNITED STATES PUBLIC LAND SURVEY CORNER CERTIFICATE

OF

Land Survey Monuments situated in Section 28, Township 96 North, Range 12 West, of the Fifth Principal Meridian, CHICKASAW County, Iowa. Previously recorded in NONE in County Recorder's Office.

(book, page, document number, etc.)

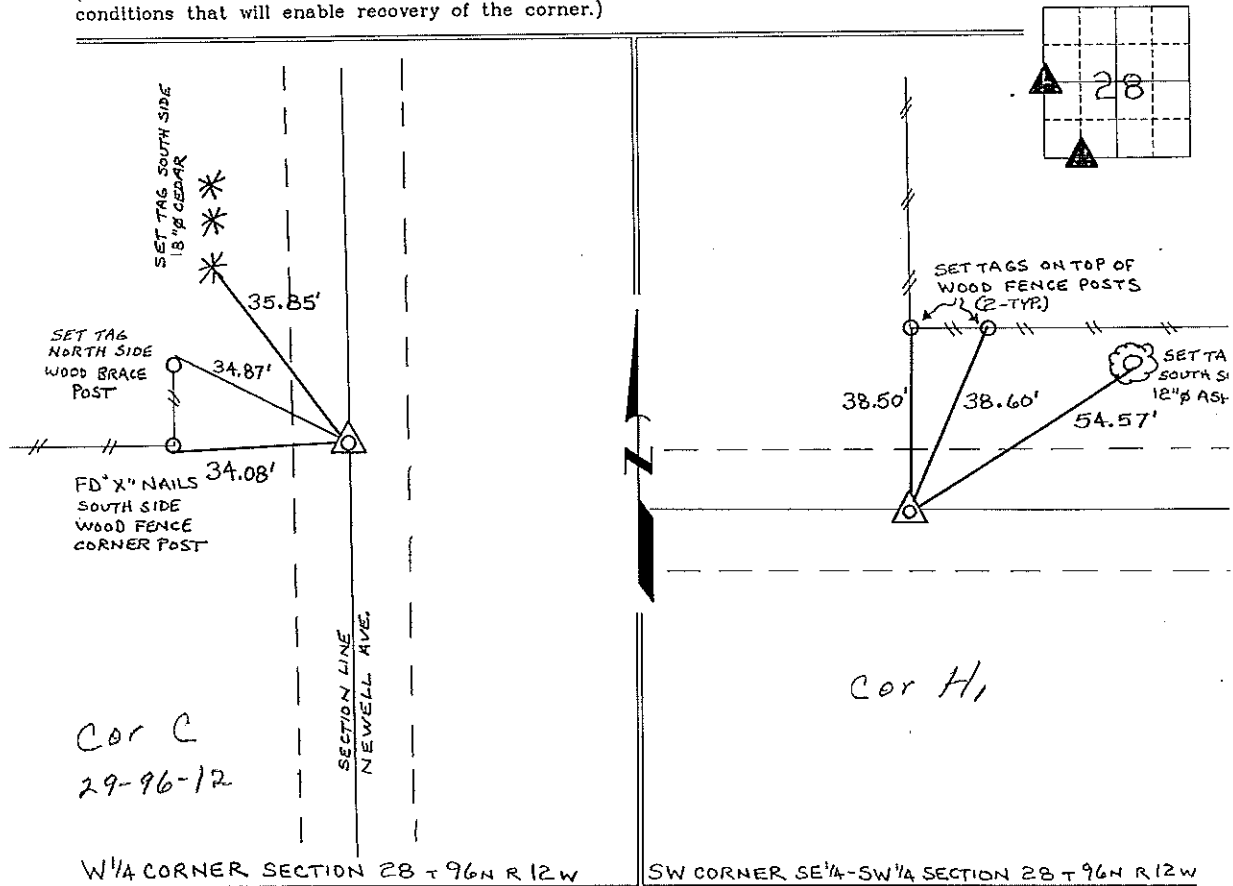
(Show reason for preparing this certificate, the evidence and detailed procedures used in establishing the corner positions and monumentation found or placed.)

Monument Description and Remarks: W 1/4 CORNER SECTION 28 T 96N R 12W: FOUND 5/8" ϕ REBAR w/CAP 7549, FROM INFORMATION ON A SURVEY AND PLAT MADE BY THOMAS V. CRAFT, RECORDED APRIL 28, 1980, DEEDS BOOK 122, PAGE 13.

SW CORNER SE 1/4 - SW 1/4 SECTION 28 T 96N R 12W: SET 1/2" ϕ REBAR w/CAP 7060, EQUADISTANT AND ON LINE BETWEEN THE SW CORNER & S 1/4 CORNER.

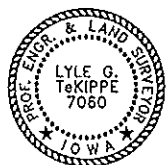
PLAN - VIEW

(Show a minimum of three reference ties to durable physical objects, relevant monuments and physical conditions that will enable recovery of the corner.)



W 1/4 CORNER SECTION 28 T 96N R 12W

SW CORNER SE 1/4 - SW 1/4 SECTION 28 T 96N R 12W



I hereby certify that this land surveying document was prepared and the related survey work was performed by me or under my direct personal supervision and that I am a duly licensed Land Surveyor under the laws of the State of Iowa.  
 Lyle G. TeKippe 2-3-97  
 Lyle G. TeKippe Date  
 License number 7060  
 My license renewal date is December 31, 1998.  
 Sheets covered by this seal: Individual

List Corners to be Indexed			
Corners	Section	Twp.	Range
W 1/4	28	96N	12W
Corner C -	29-96-12		
SW-SE-SW	28	96N	12W
Corner Corner H1 -	28-96-12		

Placed in tie book