

Prepared by: Kyle A. Johnson Address: 1900 MEDICAL ARTS AVE S, SUITE 100 SARTELL, MN Phone: 1-888-937-5150

UNITED STATES PUBLIC LAND SURVEY CORNER CERTIFICATE FOR

Land survey monuments situated in Section 33, Township 96 NORTH  
Range 12 WEST, of the Fifth Principal Meridian, CHICKASAW County, Iowa.  
Previously Recorded in \_\_\_\_\_ in County Recorder's Office.

(Show reason for preparing this certificate, the evidence and detailed procedures used in establishing the corner positions and monumentation found or placed.)

MONUMENT DESCRIPTION AND REMARKS:

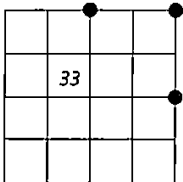
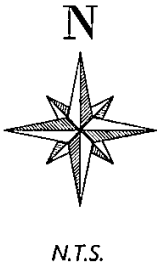
**NORTH QUARTER:** Westwood Professional Services found a 1/2" rebar 0.4' deep and 2 ties from previous records. Accepting corner location and set 1 tie. Filing corner record as there are no longer three valid ties of record.

**EAST QUARTER:** Westwood Professional Services found a 6x9 blue granite stone 0.7' deep and 2 ties per 2012 record. Accepting corner location and set 1 tie. Filing corner record as there are no longer three valid ties of record.

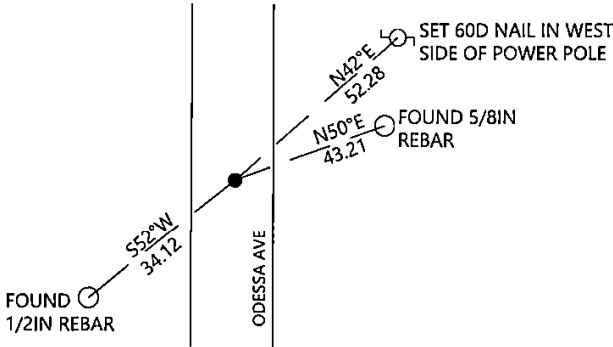
**NORTHWEST CORNER:** Westwood Professional Services found a 1" rebar 0.7' deep and 2 ties from 2013 record. Accepting corner location and set 1 tie. Filing corner record as there are no longer three valid ties of record.

PLAN - VIEW

(Show a minimum of three reference ties to durable physical objects, relevant monuments and physical conditions that will enable recovery of the corner.)

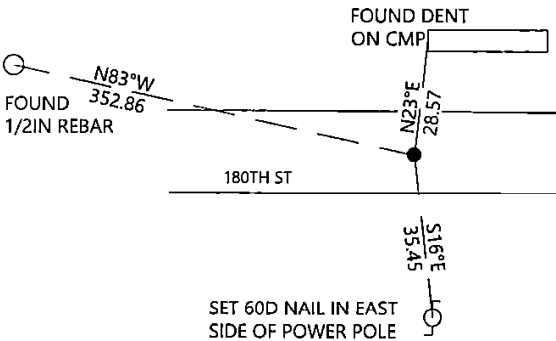


EAST QUARTER

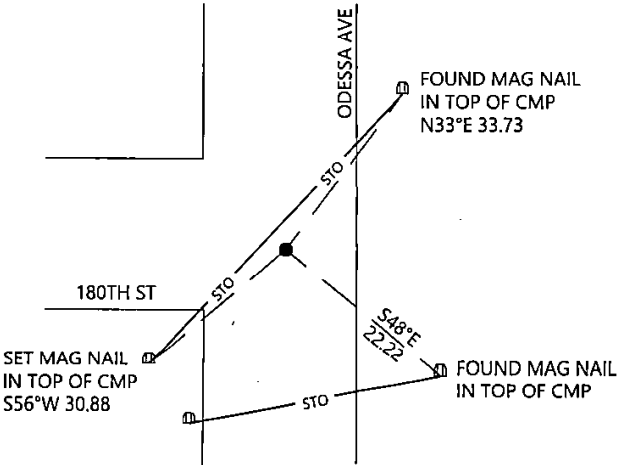


Cor. B 28-96-12

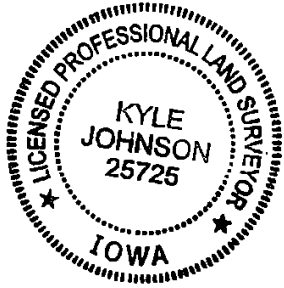
NORTH QUARTER



NORTHEAST CORNER



SEAL



I hereby certify that this land surveying document was prepared and the related survey work was performed by me or under my direct personal supervision and that I am a duly licensed Land Surveyor under the laws of the state of Iowa.

Kyle Johnson 10/4/2022  
Signature Date

Typed/Printed Name: Kyle A. Johnson

License Number: 25725

My license renewal date is December 31, 2022

Pages or sheets covered by this seal: THIS SHEET

Corners to be Indexed

Corners	Section	Twp.	Range
NQ	33	96	12
NE	33	96	12
EQ	33	96	12