

5-12-06
2006-1002

Section 26-96-12
As referred to in
Engr. Tie Book

TEKIPPE ENGINEERING, P.C., 128 South Vine Street, West Union, Iowa 52175 Phone (563) 422-6131

UNITED STATES PUBLIC LAND SURVEY CORNER CERTIFICATE

OF 26

Land Survey Monuments situated in Section 35, Township 96 North, Range 12 West of the Fifth Principal Meridian, CHICKASAW County, Iowa.

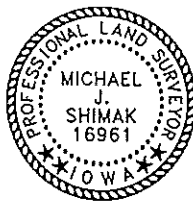
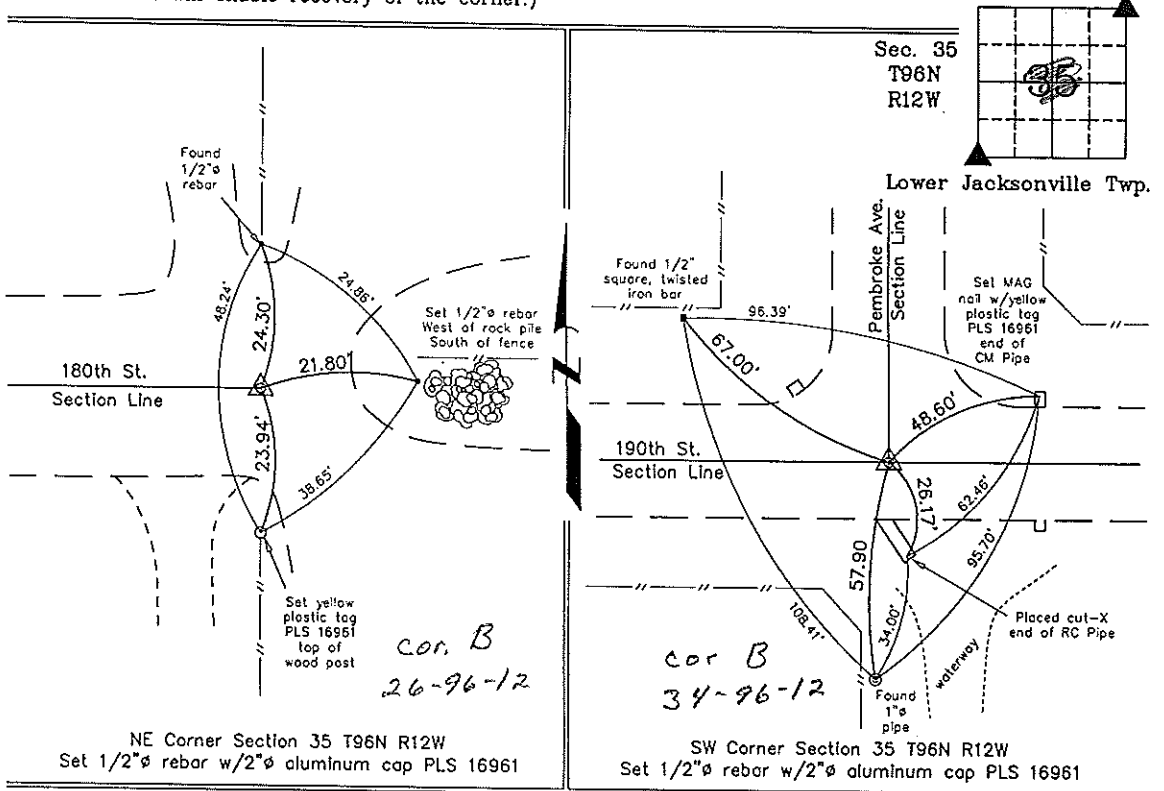
Previously recorded in none in County Recorder's Office.
(book, page, document number, etc.)

(Show reason for preparing this certificate, the evidence and detailed procedures used in establishing the corner positions and monumentation found or placed.)

Monument Description and Remarks: NE CORNER SECTION 35 T96N R12W: Set 1/2"Ø rebar w/2"Ø aluminum cap PLS 16961 on the centerline of 180th Street at the record distance from a found reference tie. Record distance was in Chickasaw County Engineer's Office in Field Book Lower Jacksonville Corner Ties, Section 26, Corner 'B'.
SW CORNER SECTION 35 T96N R12W: Set 1/2"Ø rebar w/2"Ø aluminum cap PLS 16961 using reference ties found with information from the Chickasaw County Engineer's Office in Field Book Lower Jacksonville Corner Ties, Section 34, Corner 'B'.

PLAN - VIEW

(Show a minimum of three reference ties to durable physical objects, relevant monuments and physical conditions that will enable recovery of the corner.)



I hereby certify that this land surveying document was prepared and the related survey work was performed by me or under my direct personal supervision and that I am a duly licensed Land Surveyor under the laws of the State of Iowa.

Michael J. Shimak *May 8, 2006*
Michael J. Shimak Date

License number 16961
My license renewal date is December 31, 2007.
Sheets covered by this seal: Individual

List Corners to be Indexed			
Corners	Section	Twp.	Range
NE	35	96N	12W
SW	35	96N	12W

Project Number 06134.1S
FB. 46M PG. 8-10

X:\Section Corners\Sec. 35\35-96-12eu.dwg