

Prepared by & Return to: Herold - Recks Surveying, 10 East Main Street, New Hampton, IA 50658, Ph. 641-394-2725

UNITED STATES PUBLIC LAND SURVEY CORNER CERTIFICATE

2.7

Land Survey Monuments situated in Section 34, Township 96 North, Range 12 West of the Fifth Principal Meridian, Chickasaw County, Iowa. 1.) Not previously recorded in the County Recorder's office.
 2.) Previously recorded in Bk. 159, Pg. 70, in the County Recorder's office.

This certificate is being prepared in compliance with Iowa Code Chapter 355.11 because:

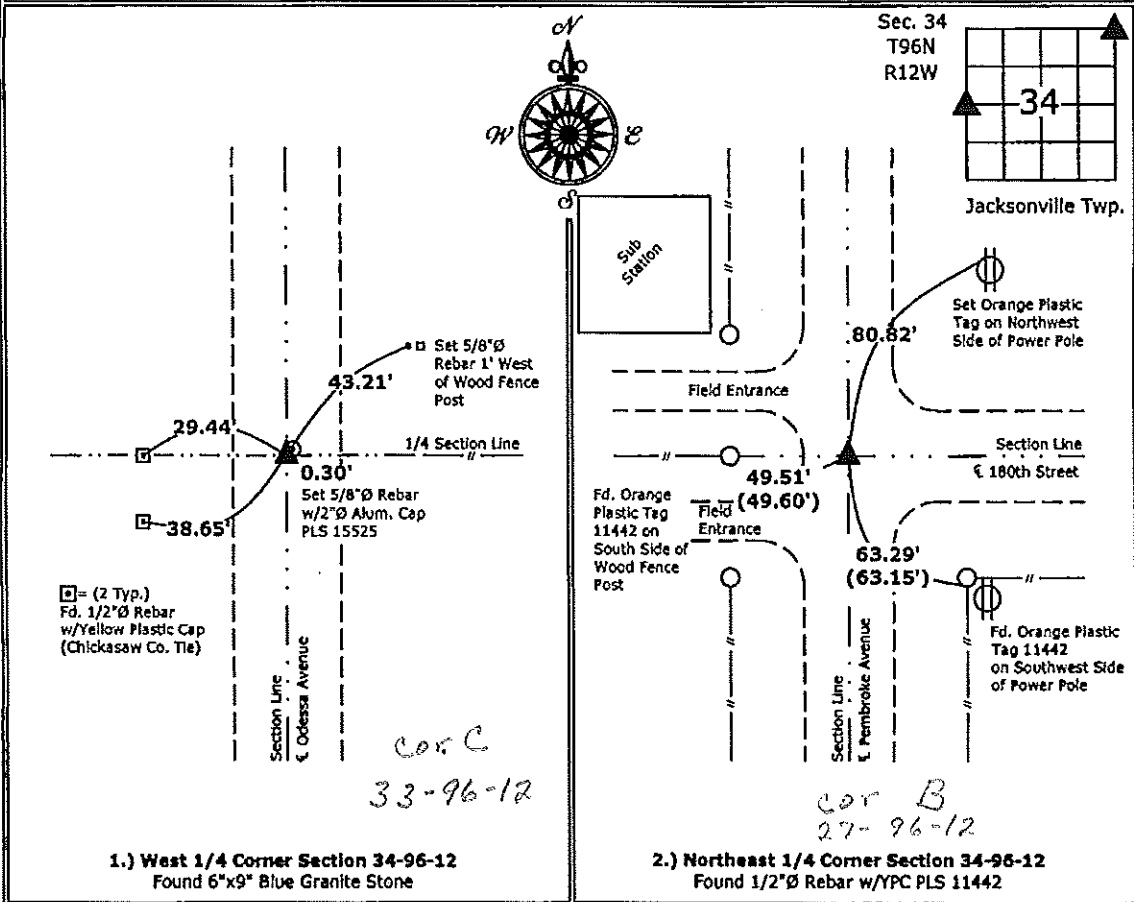
- 1 There is no certificate on file for this corner.
- 2 There are no longer three valid ties of record.
- There are changes to reference ties of record.
- There is change of monumentation of record.
- To clarify description of record monument (ties).

Monument Description and Remarks:

- 1.) **West 1/4 Corner:** Found 6"x9" Blue Granite Stone from information obtained from County Engineers Office. Set new ties to update the corner. Set 5/8"Ø Rebar w/2"Ø Alum. Cap 0.30' Northeast as an Accessory.
- 2.) **Northeast 1/4 Corner:** Found 1/2"Ø Rebar w/YPC PLS 11442 from information obtained from a previous Section Corner Certificate, set new ties to update the corner.

PLAN - VIEW

(Show a minimum of three reference ties to durable physical objects, relevant monuments and physical conditions that will enable recovery of the corner.)



1.) West 1/4 Corner Section 34-96-12
 Found 6"x9" Blue Granite Stone

2.) Northeast 1/4 Corner Section 34-96-12
 Found 1/2"Ø Rebar w/YPC PLS 11442



I hereby certify that this land surveying document was prepared and the related survey work was performed by me or under my direct personal supervision and that I am a duly licensed Land Surveyor under the laws of the State of Iowa.

Paul R. Herold 10-25-12
 Paul R. Herold Date:
 License number 15525
 My license renewal date is December 31, 2012.
 Sheets covered by this seal: Individual sheet only

List Corners to be Indexed			
Corners	Section	Twp.	Range
W 1/4	34	96	12
NE	34	96	12

Project Number: 2012-183
 FB: Chickasaw County 4, Pgs. 63-64

UNITED STATES PUBLIC LAND SURVEY CORNER CERTIFICATE

OF 27

Land Survey Monuments situated in Section 26, Township 26 N
 Range 12 W, of the Fifth Principal Meridian, Chickasaw
 County, Iowa. Previously recorded in does not apply in
 County Recorders Office. (book, page, document number, etc.)

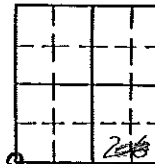
(Show reason for preparing this certificate, the evidence and detailed procedures used in establishing the corner positions and monumentation found or placed.)

Monument Description and Remarks: This certificate is prepared in accordance with Section 355.11 of the 1995 Code of Iowa. In this case no previous certificate has been filed for this corner location. Based on County Engineer's reference ties we found this corner but none of the reference ties. We found a 3/4" bar 2' deep at the centerline intersection of County Roads N-S & E as described in the reference ties, but all ties previously taken appear to have been lost. We took new ties to the 3/4" bar set previously as the SW corner of Sec. 26-96-12 and set a 1/2" bar with cap RLS #11442 over the top from these ties.

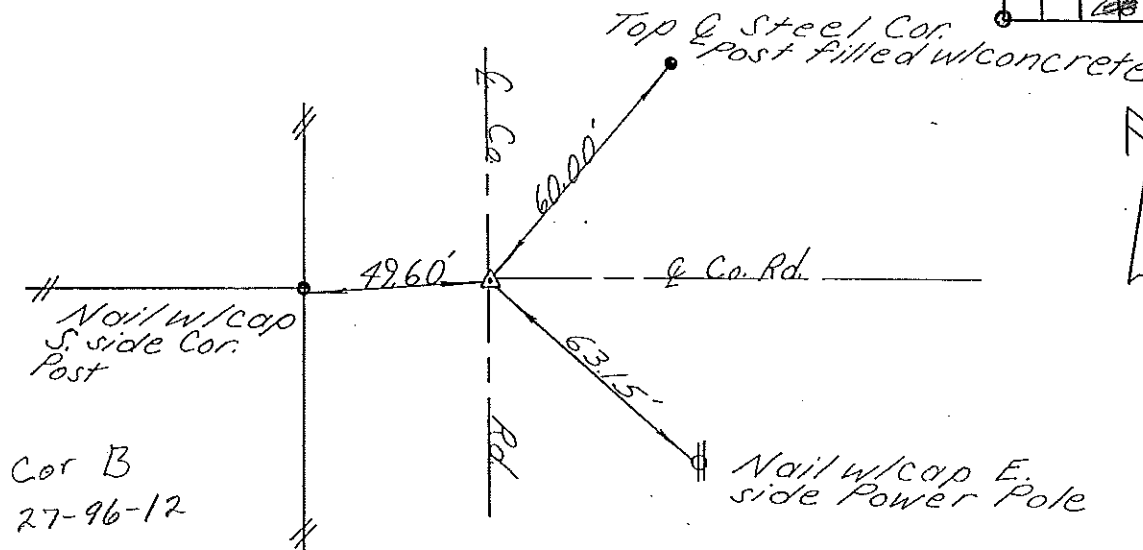
PLAN - VIEW

(Show a minimum of three reference ties to durable physical objects, relevant monuments and physical conditions that will enable recovery of the corner.)

S.W. Cor. Fd 3/4" Bar 2' deep; Set 1/2" bar w/cap over top



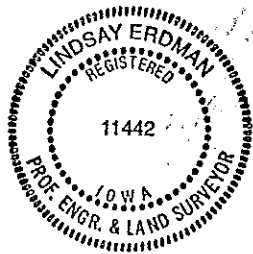
Section 27-96-12
 As referred to in
 Engr. Tie Book



I hereby certify that the survey work was completed and this certificate was prepared by me or under by direct personal supervision and that I am a duly registered land surveyor under the laws of the State of Iowa.

Signature: Lindsay Erdman
 Lindsay Erdman, P.E. & L.S.
 Date: _____ Reg. No. 11442
 My license will be renewed January 1, 1997.

SEAL



Corners	List Corners to be Indexed	Section	Twp.	Range.
S.W. Cor.	26	96	12	

Cor B - 27-96-12

Placed in tie book
 10/10/95