



Prepared by: Kyle A. Johnson Address: 1900 MEDICAL ARTS AVE S, SUITE 100 SARTELL MN Phone: 1-888-937-5150

UNITED STATES PUBLIC LAND SURVEY CORNER CERTIFICATE FOR

Land survey monuments situated in Section 36, Township 96 NORTH  
12 WEST, of the Fifth Principal Meridian, CHICKASAW County, Iowa.

Previously Recorded in \_\_\_\_\_ in County Recorder's Office.

(Show reason for preparing this certificate, the evidence and detailed procedures used in establishing the corner positions and monumentation found or placed.)

MONUMENT DESCRIPTION AND REMARKS:

**THIS DOCUMENT IS INTENDED TO REPLACE PAGE 2 OF INSTRUMENT #2022-1873 AS THERE WAS AN ERROR IN THE CORNER IDENTIFICATION.**

**NORTH QUARTER:** Westwood Professional Services found a 1" rebar 1.5' deep of unknown origin and 2 ties from engineers tie book. Corner is near centerline and fence line intersection. Accepting corner location as best available evidence of the corner location. Set 1 tie. Filing corner record as there is no certificate on file for this corner

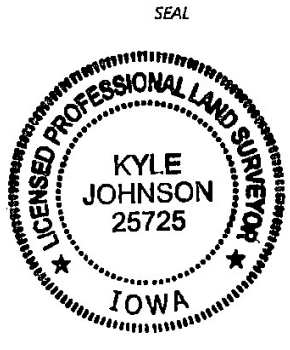
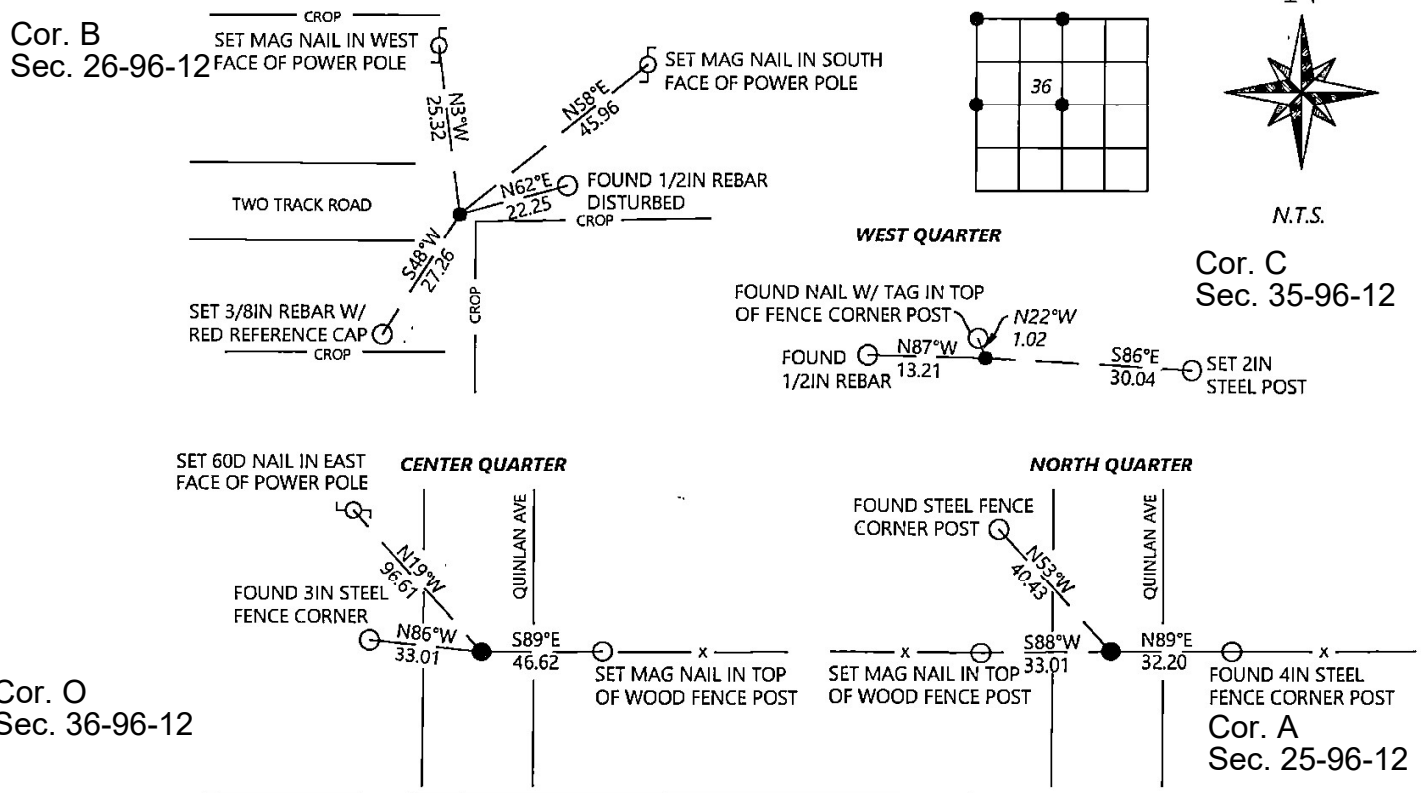
**CENTER QUARTER:** Westwood Professional Services found a 1/2" rebar 0.2' deep and 1 tie from engineers tie book. Accepting corner location as best available evidence and set 2 ties. Filing corner record as there is no certificate on file for this corner.

**WEST QUARTER:** Westwood Professional Services found a 1/2" rebar with 2" aluminum cap LS16961 and 2 ties from 2006 record. Accepting corner location and set 1 tie. Filing corner record as there are no longer 3 valid ties of record.

**NORTHWEST CORNER:** Westwood Professional Services found a 1/2" rebar with 2" aluminum cap LS16961. Found 1 tie that has been disturbed. Accepting corner location and set 3 ties. Filing corner record as there are no longer 3 valid ties of record.

PLAN - VIEW

(Show a minimum of three reference ties to durable physical objects, relevant monuments and physical conditions that will enable recovery of the corner.)



I hereby certify that this land surveying document was prepared and the related survey work was performed by me or under my direct personal supervision and that I am a duly licensed Land Surveyor under the laws of the state of Iowa.

Signature: Kyle Johnson Date: 01/03/2023  
 Typed/Printed Name: Kyle A. Johnson  
 License Number: 25725  
 My license renewal date is December 31, 2024  
 Pages or sheets covered by this seal: THIS SHEET

Corners to be Indexed

| Corners | Section | Twp. | Range |
|---------|---------|------|-------|
| NQ      | 36      | 96   | 12    |
| CQ      | 36      | 96   | 12    |
| WQ      | 36      | 96   | 12    |
| NW      | 36      | 96   | 12    |

Prepared by: Kyle A. Johnson Address: 1900 MEDICAL ARTS AVE S, SUITE 100 SARTELL MN Phone: 1-888-937-5150

UNITED STATES PUBLIC LAND SURVEY CORNER CERTIFICATE FOR

Land survey monuments situated in Section 36, Township 96 NORTH  
 Range 12 WEST, of the Fifth Principal Meridian, CHICKASAW County, Iowa.

Previously Recorded in \_\_\_\_\_ in County Recorder's Office.

(Show reason for preparing this certificate, the evidence and detailed procedures used in establishing the corner positions and monumentation found or placed.)

MONUMENT DESCRIPTION AND REMARKS:

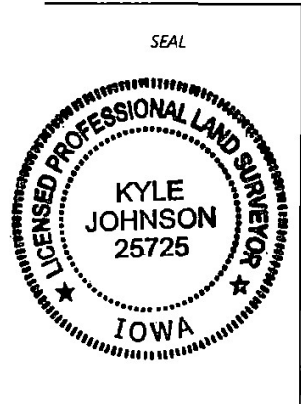
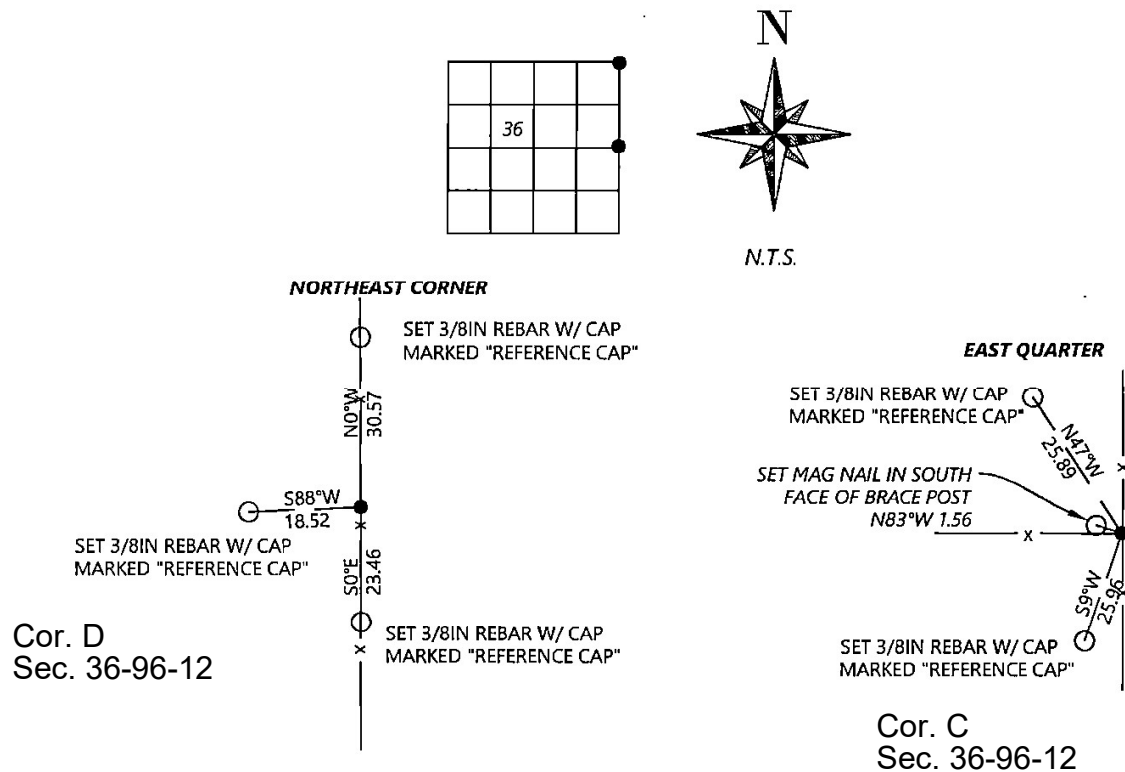
**THIS DOCUMENT IS INTENDED TO REPLACE PAGE 2 OF INSTRUMENT #2022-1873 AS THERE WAS AN ERROR IN THE CORNER IDENTIFICATION.**

**NORTHEAST CORNER:** Westwood Professional Services searched the area for record stone, without recovery of a monument. Found an angle iron post with brace that appears to have been used as a corner post. Distances from Chickasaw engineering books fit post within reason and the distance from the East Quarter corner of Section 25, T96N, R 12W, fits very well. Accepting the angle iron post as the best available evidence of the corner location. Set 1/2" rebar with orange LS 25725 cap at base of post as accessory. Filing record due to no previous record.

**EAST QUARTER:** Westwood Professional Services searched the area and found a 2" aluminum cap stamped PLS 15525 on a 5/8" rebar. Monument fits previous survey. Accepting the aluminum cap as the corner position. Filing record due to missing ties.

PLAN - VIEW

(Show a minimum of three reference ties to durable physical objects, relevant monuments and physical conditions that will enable recovery of the corner.)



I hereby certify that this land surveying document was prepared and the related survey work was performed by me or under my direct personal supervision and that I am a duly licensed Land Surveyor under the laws of the state of Iowa.

Signature: Kyle Johnson Date: 01/03/2023  
 Typed/Printed Name: Kyle A. Johnson  
 License Number: 25725  
 My license renewal date is December 31, 2024  
 Pages or sheets covered by this seal: THIS SHEET

| Corners to be Indexed |         |      |       |
|-----------------------|---------|------|-------|
| Corners               | Section | Twp. | Range |
| NE                    | 36      | 96   | 12    |
| EQ                    | 36      | 96   | 12    |