

May 09, 2006
2006-0971

TeKIPPE ENGINEERING, P.C., 128 South Vine Street, West Union, Iowa 52175 Phone (563) 422-5131

UNITED STATES PUBLIC LAND SURVEY CORNER CERTIFICATE

OF

Land Survey Monuments situated in Section 35, Township 96 North, Range 12 West of the Fifth Principal Meridian, CHICKASAW County, Iowa. Previously recorded in none in County Recorder's Office. (book page, document number, etc.)

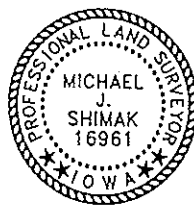
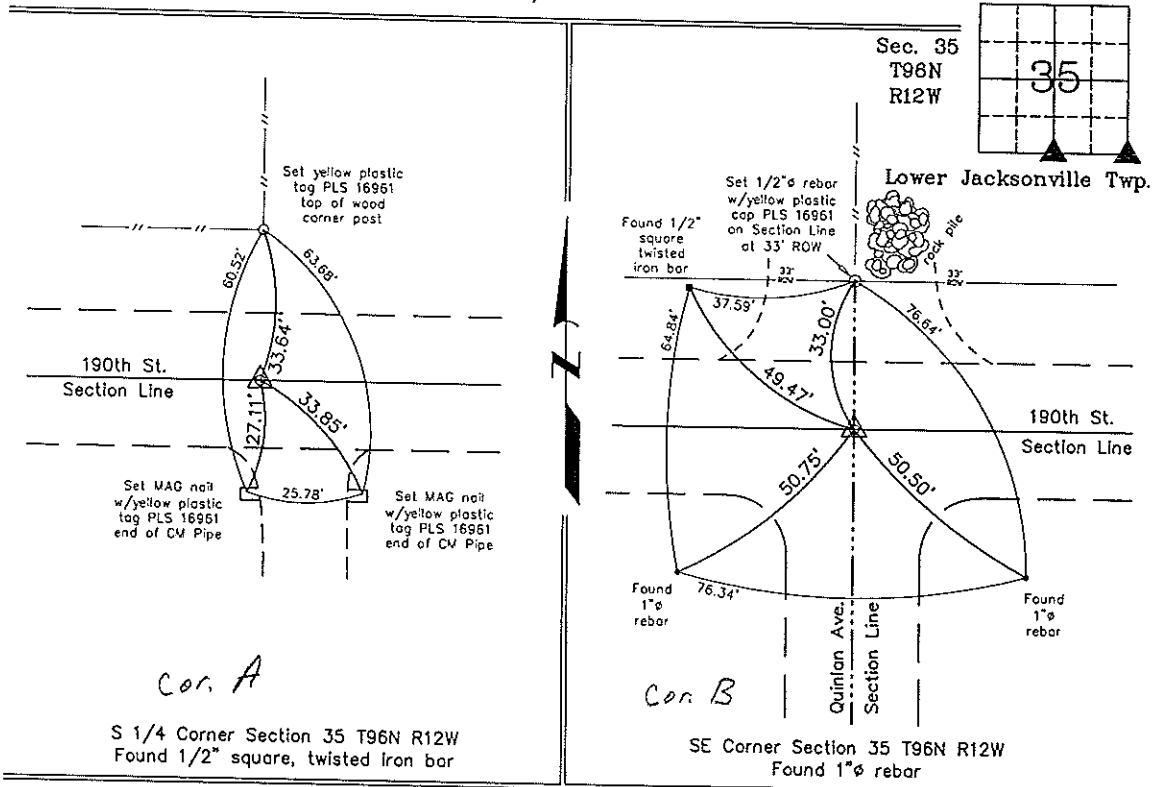
(Show reason for preparing this certificate, the evidence and detailed procedures used in establishing the corner positions and monumentation found or placed.)

Monument Description and Remarks: S 1/4 CORNER SECTION 35 T96N R12W: Found 1/2" square, twisted iron bar using information from the Chickasaw County Engineer's Office in Field Book Lower Jacksonville Twp. Corner Ties, Corner 'A'.

SE CORNER SECTION 35 T96N R12W: Found 1"Ø rebar using information from the Chickasaw County Engineer's Office in Field Book Lower Jacksonville Twp. Corner Ties, Corner 'B'.

PLAN - VIEW

(Show a minimum of three reference ties to durable physical objects, relevant monuments and physical conditions that will enable recovery of the corner.)



I hereby certify that this land surveying document was prepared and the related survey work was performed by me or under my direct personal supervision and that I am a duly licensed Land Surveyor under the laws of the State of Iowa.
Michael J. Shimak *May 8, 2006*
Michael J. Shimak Date
License number 16961
My license renewal date is December 31, 2007.
Sheets covered by this seal: Individual

List Corners to be Indexed			
Corners	Section	Twp.	Range
S 1/4	35	96N	12W
SE	35	96N	12W

Project Number 06134.LS
FB. 46M PG. 8-10
X:\Section Corners\Sec. 35\35-96-12wy.dwg