

Instrument #: 2022-1869  
 10/14/2022 03:34:21 PM Total Pages: 2  
 SCC SECTION CORNER CERTIFICATES  
 Recording Fee: \$ 12.00  
 Shirley Troyna, Recorder, Chickasaw County Iowa



Prepared by: Kyle A. Johnson Address: 1900 MEDICAL ARTS AVE S, SUITE 100 SARTELL, MN Phone: 1-888-937-5150

UNITED STATES PUBLIC LAND SURVEY CORNER CERTIFICATE FOR

Land survey monuments situated in Section 3, Township 96 NORTH  
 Range 12 WEST, of the Fifth Principal Meridian, CHICKASAW County, Iowa.  
 Previously Recorded in \_\_\_\_\_ in County Recorder's Office.

(Show reason for preparing this certificate, the evidence and detailed procedures used in establishing the corner positions and monumentation found or placed.)

MONUMENT DESCRIPTION AND REMARKS:

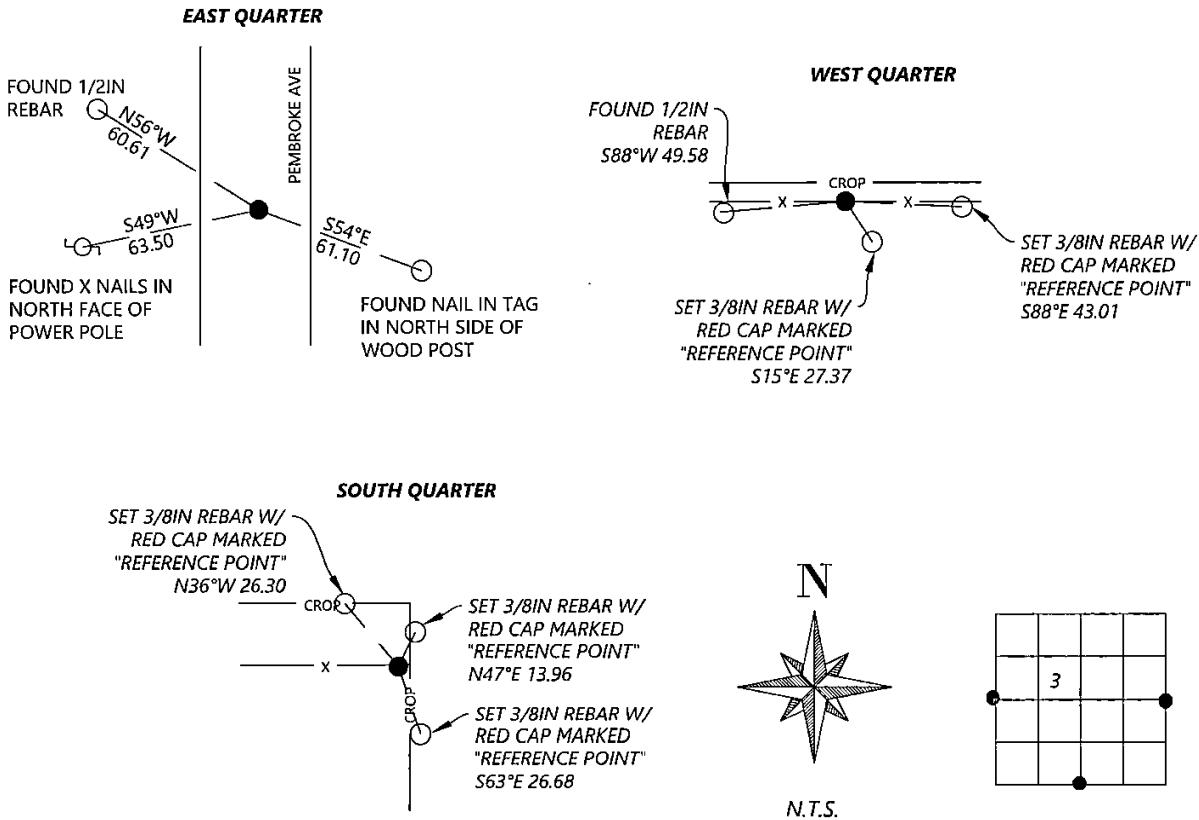
**EAST QUARTER:** Westwood Professional Services found a 1/2" rebar and 1 tie from 2007 and 1991 record. Found 1 tie from 2007 record that does not agree with distance and 1 tie of unknown origin. Accepting corner location. Filing corner record as there are changes to the reference ties of record.

**SOUTH QUARTER:** Westwood Professional Services found a 1/2 rebar that agrees with 1991 Craft and 1994 Casady records. Accepting the 1/2" rebar as the corner position. Filing due to missing ties.

**WEST QUARTER:** Westwood Professional Services found 1/2" rebar with 7060 cap. This monument agrees with previous records. Accepting as the corner position and set additional ties. Filing record due to missing ties.

PLAN - VIEW

(Show a minimum of three reference ties to durable physical objects, relevant monuments and physical conditions that will enable recovery of the corner.)



I hereby certify that this land surveying document was prepared and the related survey work was performed by me or under my direct personal supervision and that I am a duly licensed Land Surveyor under the laws of the state of Iowa.

Signature: Kyle A. Johnson Date: 10/4/2022  
 Typed/Printed Name: Kyle A. Johnson  
 License Number: 25725  
 My license renewal date is December 31, 2022  
 Pages or sheets covered by this seal: THIS SHEET

Corners to be Indexed

Corners	Section	Twp.	Range
EQ	3	96	12
SQ	3	96	12
WQ	3	96	12

Prepared by: Kyle A. Johnson Address: 1900 MEDICAL ARTS AVE S, SUITE 100 SARTELL, MN Phone: 1-888-937-5150

**UNITED STATES PUBLIC LAND SURVEY CORNER CERTIFICATE FOR**

Land survey monuments situated in Section 3, Township 96 NORTH  
 Range 12 WEST, of the Fifth Principal Meridian, CHICKASAW County, Iowa.

Previously Recorded in \_\_\_\_\_ in County Recorder's Office.

*(Show reason for preparing this certificate, the evidence and detailed procedures used in establishing the corner positions and monumentation found or placed.)*

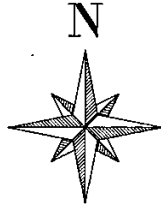
**MONUMENT DESCRIPTION AND REMARKS:**

**NORTHWEST CORNER:** Westwood Professional Services searched the area and found a fence post that fit Lyle TeKippe records. The top of the fence post had the center rotted out and did not recover a nail with tag. Accepting the fence post as the corner position. Set a 1/2" rebar with orange LS 25725 cap at base of post as accessory. Filing due to differences in previous record.

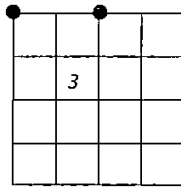
**NORTH QUARTER:** Westwood Professional Services searched the area and did not recover a monument. Distances from two different Chickasaw County Engineer tie books place the E/W location near online with a fence line running south, with the distance from the NW corner of Section 3, agreeing better. Found the 16th corner west of this position per 2019 Kirk Reicks certificate filed as Inst. No. 2019-0840 and the NE corner of Section 3 per 2007 Gary Casady certificate filed as Fee Book 2007-1485. Utilized these two corners to control the N/S position and the fence line that runs south to control the E/W position as the best available evidence of the corner position. Set a 1/2" rebar with orange LS 25725 cap at this location. Filing due to no previous corner certificate on file.

**PLAN - VIEW**

*(Show a minimum of three reference ties to durable physical objects, relevant monuments and physical conditions that will enable recovery of the corner.)*

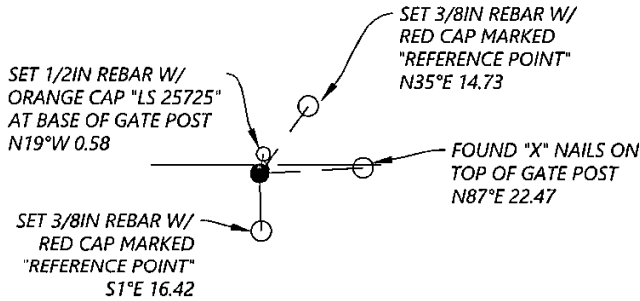


N.T.S.

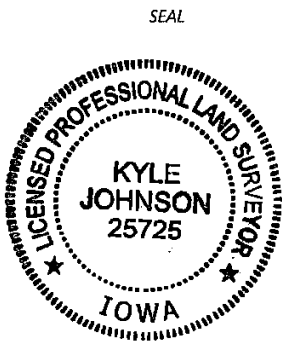
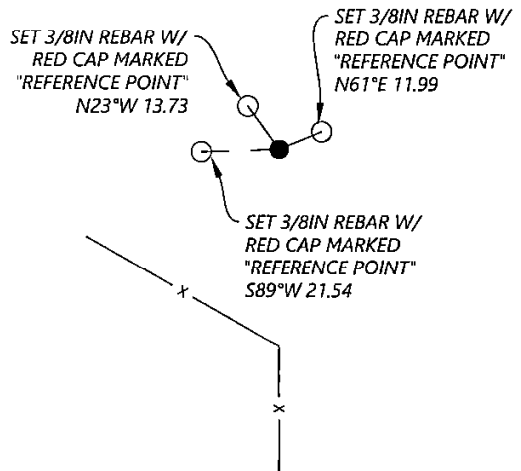


Cor. E 3-96-12

**NORTHWEST CORNER**



**NORTH QUARTER**



I hereby certify that this land surveying document was prepared and the related survey work was performed by me or under my direct personal supervision and that I am a duly licensed Land Surveyor under the laws of the state of Iowa.

Signature Kyle A. Johnson Date 10/14/2022

Typed/Printed Name: Kyle A. Johnson

License Number: 25725

My license renewal date is December 31, 2022

Pages or sheets covered by this seal: THIS SHEET

**Corners to be Indexed**

Corners	Section	Twp.	Range
NQ	3	96	12
NW	3	96	12