

Instrument #: 2022-1868
 10/14/2022 03:34:21 PM Total Pages: 1
 SCC SECTION CORNER CERTIFICATES
 Recording Fee: \$ 7.00
 Shirley Troyna, Recorder, Chickasaw County Iowa



Prepared by: Kyle A. Johnson Address: 1900 MEDICAL ARTS AVE S. SUITE 100 SARTELL, MN Phone: 1-888-937-5150

UNITED STATES PUBLIC LAND SURVEY CORNER CERTIFICATE FOR

Land survey monuments situated in Section 4, Township 96 NORTH
12 WEST, of the Fifth Principal Meridian, CHICKASAW County, Iowa.

Previously Recorded in _____ in County Recorder's Office.

(Show reason for preparing this certificate, the evidence and detailed procedures used in establishing the corner positions and monumentation found or placed.)

MONUMENT DESCRIPTION AND REMARKS:

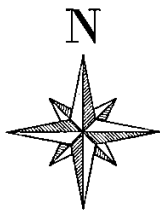
NORTH QUARTER: Westwood Professional Services found a 1/2" rebar 0.5' deep and 1 tie per 1991 and 1997 corner records. Accepting corner location and set 2 ties. Filing corner record as there are no longer three valid ties of record.

SOUTHWEST CORNER: Westwood Professional Services found a T-post 0.2' deep and 2 ties from engineers tie book. Accepting corner location and set 1 tie. Filing corner record as there are no longer 3 valid ties of record

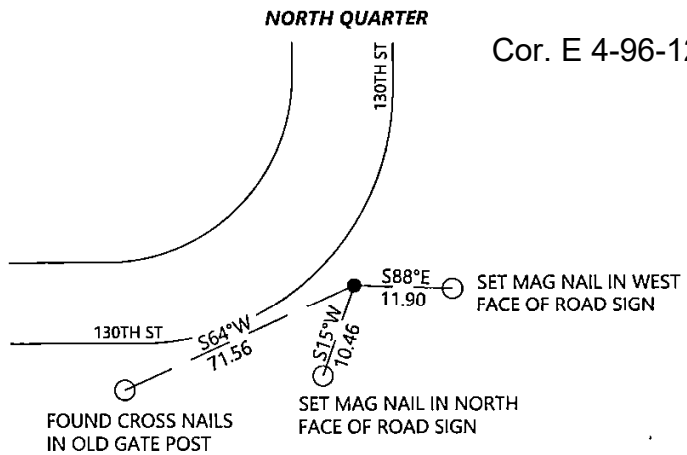
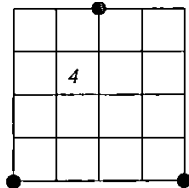
SOUTHEAST CORNER: Westwood Professional Services found a 3/4" rebar 0.4' deep at centerline intersection and 2 ties per 2006 corner record. Accepting corner location and set 1 tie. Filing corner record as there are no longer three valid ties of record.

PLAN - VIEW

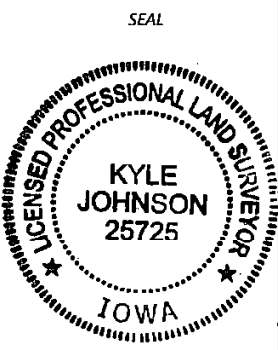
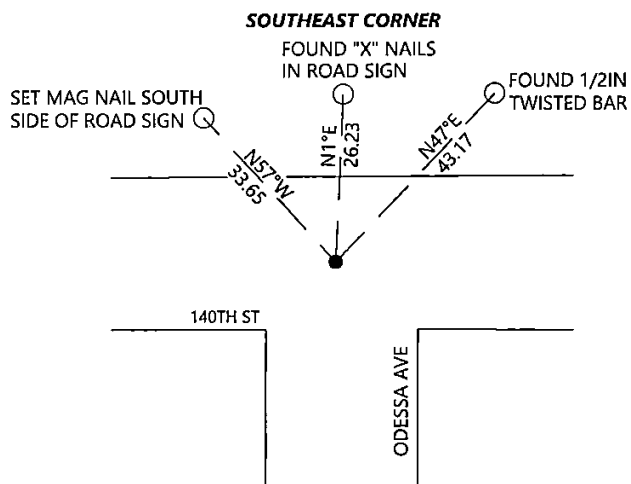
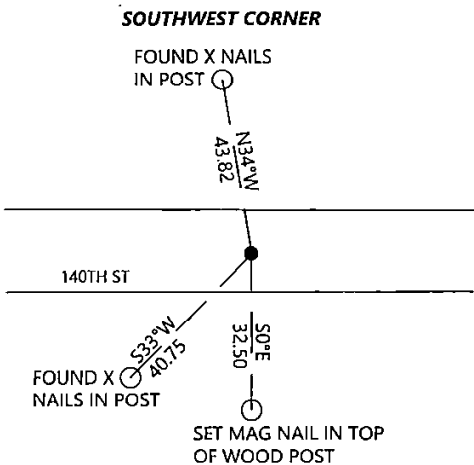
(Show a minimum of three reference ties to durable physical objects, relevant monuments and physical conditions that will enable recovery of the corner.)



N.T.S.



Cor. E 4-96-12



I hereby certify that this land surveying document was prepared and the related survey work was performed by me or under my direct personal supervision and that I am a duly licensed Land Surveyor under the laws of the state of Iowa.

Signature: Kyle Johnson Date: 10/14/2022

Typed/Printed Name: Kyle A. Johnson

License Number: 25725

My license renewal date is December 31, 2022

Pages or sheets covered by this seal: THIS SHEET

Corners to be Indexed

Corners	Section	Twp.	Range
NQ	4	96	12
SW	4	96	12
SE	4	96	12