

Section 1-96-13
As referred to in
Engr. The Book

FILED 2002 **2059**
RECORDER'S OFFICE
CHICKASAW COUNTY, IOWA
2002 AUG 26 AM 9 30
CINDY MESSERSMITH
COUNTY RECORDER

TeKIPPE ENGINEERING, P.C., 128 South Vine Street, West Union, Iowa 52175 Phone (563) 422-5131

UNITED STATES PUBLIC LAND SURVEY CORNER CERTIFICATE

OF 1
Land Survey Monuments situated in Section 6, Township 96 North, Range 12/3 West of the Fifth Principal Meridian, CHICKASAW County, Iowa.
Previously recorded in none in County Recorder's Office.
(book, page, document number, etc.)

(Show reason for preparing this certificate, the evidence and detailed procedures used in establishing the corner positions and monumentation found or placed.)

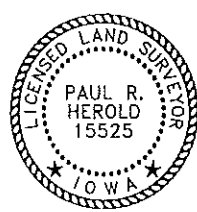
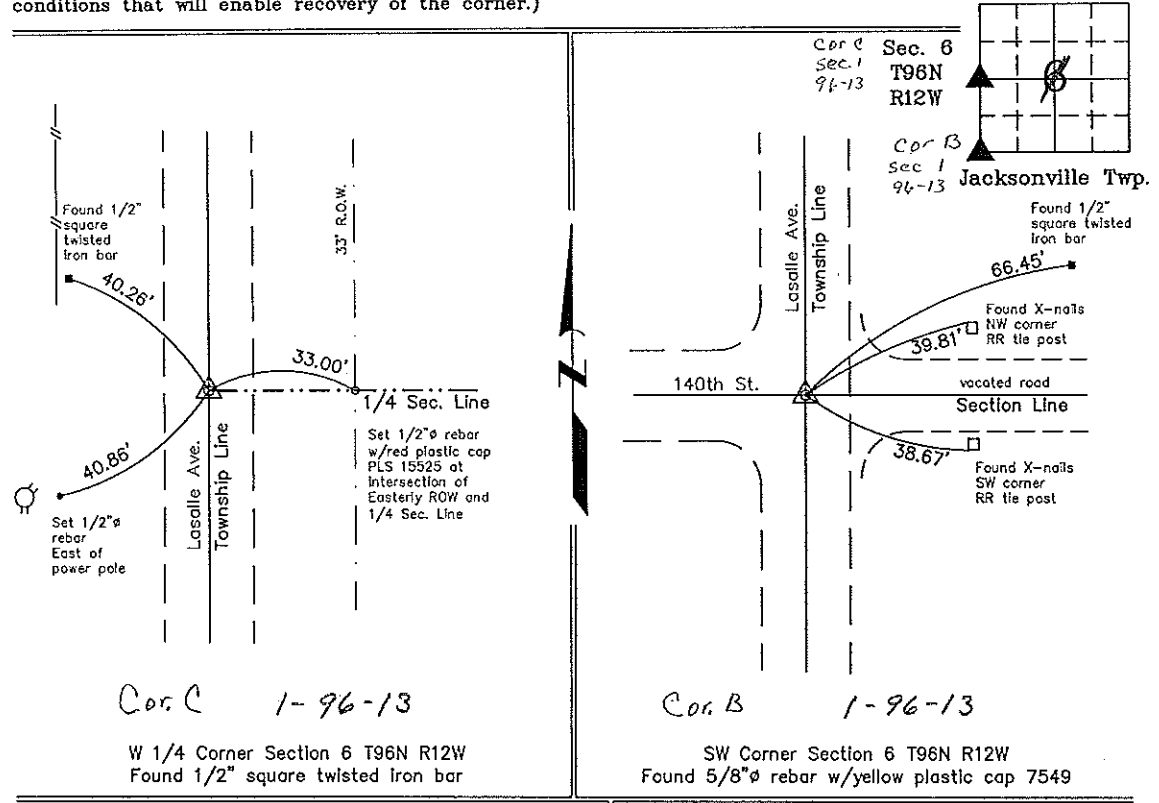
Monument Description and Remarks: W 1/4 Section 6 T96N R12W: Found 1/2" square twisted iron bar with information obtained from the Chickasaw County Engineer's Office in Field Book Washington South Twp. Corner Ties, Section 1, Corner 'C'.

SW Corner Section 6 T96N R12W: Found 5/8" rebar w/yellow plastic cap 7549 with information obtained from the Chickasaw County Engineer's Office in Field Book Washington South Twp. Corner Ties, Section 1, Corner 'B'.

PLAN - VIEW

Project Number 02171.LS
FB. 46J PG. 32-33

(Show a minimum of three reference ties to durable physical objects, relevant monuments and physical conditions that will enable recovery of the corner.)



I hereby certify that this land surveying document was prepared and the related survey work was performed by me or under my direct personal supervision and that I am a duly licensed Land Surveyor under the laws of the State of Iowa.
Paul R. Herold 8-23-02
Paul R. Herold Date
License number 15525
My license renewal date is December 31, 2002.
Sheets covered by this seal: Individual

List Corners to be Indexed			
Corners	Section	Twp.	Range
W 1/4	6	96N	12W
SW	6	96N	12W

Filed 9-5-02
X:\Section Corners\Sec. 06\6-96-12ku.dwg

County Engineer's Copy