

TeKIPPE ENGINEERING, P.C., 128 South Vine Street, West Union, Iowa 52175 Phone (563) 422-5131

UNITED STATES PUBLIC LAND SURVEY CORNER CERTIFICATE

OF

Land Survey Monuments situated in Section 6, Township 96 North, Range 12 West of the Fifth Principal Meridian, CHICKASAW County, Iowa.

Previously recorded in none in County Recorder's Office.
 (book, page, document number, etc.)

(Show reason for preparing this certificate, the evidence and detailed procedures used in establishing the corner positions and monumentation found or placed.)

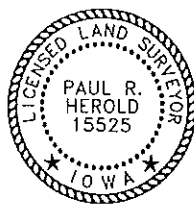
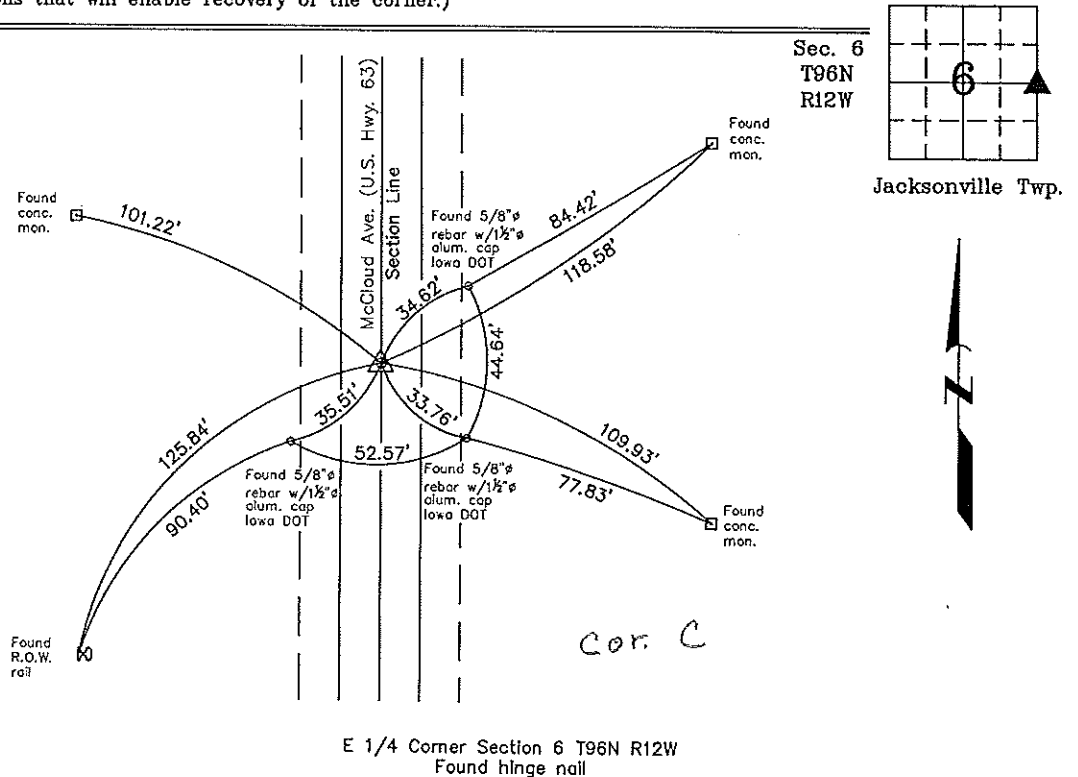
Monument Description and Remarks: **E 1/4 Corner Section 6 T96N R12W: Found Hinge Nail with information obtained from the as-built plans for the Iowa Department of Transportation Project F-63-8(1)* * 20-19.**

NOTE: Section Corner is also P.I. Sta. 408+89.6

PLAN - VIEW

Project Number 02171.LS
 FB. 46J PG. 32-33

(Show a minimum of three reference ties to durable physical objects, relevant monuments and physical conditions that will enable recovery of the corner.)



I hereby certify that this land surveying document was prepared by me or under my direct personal supervision and that I am a duly Licensed Land Surveyor under the laws of the State of Iowa.

Paul R. Herold 8-23-02
 Paul R. Herold Date

License number 15525
 My license renewal date is December 31, 2002.
 Sheets covered by this seal: Individual

Corners	List Corners to be Indexed		
	Section	Twp.	Range
E 1/4	6	96N	12W

Filed 9-5-02

X:\Section Corners\Sec. 06\6-96-12a.dwg

County Engineer's
Prosser