

Instrument #: 2022-1867
 10/14/2022 03:34:21 PM Total Pages: 1
 SCC SECTION CORNER CERTIFICATES
 Recording Fee: \$ 7.00
 Shirley Troyna, Recorder, Chickasaw County Iowa



Prepared by: Kyle A. Johnson Address: 1900 MEDICAL ARTS AVE S. SUITE 100 SARTELL, MN Phone: 1-888-937-5150

UNITED STATES PUBLIC LAND SURVEY CORNER CERTIFICATE FOR

Land survey monuments situated in Section 6, Township 96 NORTH
 Range 12 WEST, of the Fifth Principal Meridian, CHICKASAW County, Iowa.
 Previously Recorded in _____ in County Recorder's Office.

(Show reason for preparing this certificate, the evidence and detailed procedures used in establishing the corner positions and monumentation found or placed.)

MONUMENT DESCRIPTION AND REMARKS:

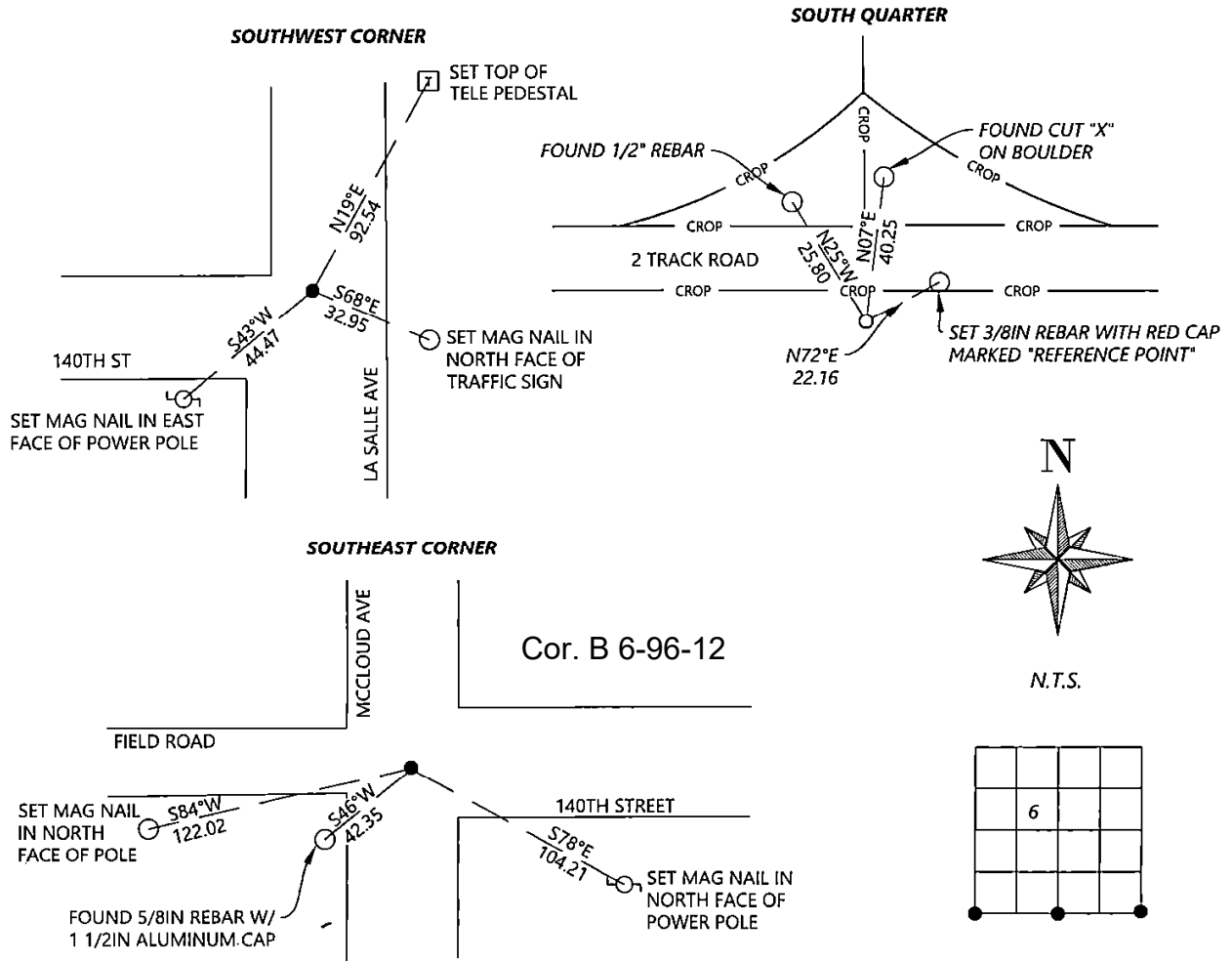
SOUTHWEST CORNER: Westwood Professional Services found a 5/8" rebar 0.2' deep monument that agrees with longstanding records. Accepting corner location and set 3 ties. Filing corner record as there is no certificate on file for this corner.

SOUTHEAST CORNER: Westwood Professional Services found a survey nail with washer and 1 tie from 1997 record. Distances agree with previous records. Accepting corner location and set 2 ties. Filing corner record as there are no longer 3 valid ties of record.

SOUTH QUARTER CORNER: Westwood Professional Services searched and found 2 ties per 2009 corner record. Set 1/2 rebar with orange LS25725 cap per 2009 Reicks corner record. Set 1 tie. Filing corner record as there is change in monumentation of record and there are no longer 3 valid ties of record.

PLAN - VIEW

(Show a minimum of three reference ties to durable physical objects, relevant monuments and physical conditions that will enable recovery of the corner.)



SEAL



I hereby certify that this land surveying document was prepared and the related survey work was performed by me or under my direct personal supervision and that I am a duly licensed Land Surveyor under the laws of the state of Iowa.

Signature: Kyle A. Johnson Date: 10/14/2022

Typed/Printed Name: Kyle A. Johnson

License Number: 25725

My license renewal date is December 31, 2022

Pages or sheets covered by this seal: THIS SHEET

Corners to be Indexed

Corners	Section	Twp.	Range
SW	6	96	12
SE	6	96	12
SQ	6	96	12