

Section 8-96-12
As referred to in
Engr. Title Book

Chickasaw Co Recorder: Cindy Messersmith
 EEE BOOK 2006-0864 4/24/2006 @ 09:25AM
 SEC SEC COR CERT Book: Page: #: 1
 Total Fees: \$7.00

TeKIPPE ENGINEERING, P.C., 128 South Vine Street, West Union, Iowa 52175 Phone (563) 422-5131

UNITED STATES PUBLIC LAND SURVEY CORNER CERTIFICATE

OF 8
 Land Survey Monuments situated in Section 9 8, Township 96 North, Range 12 West of the Fifth Principal Meridian, CHICKASAW County, Iowa.
 Previously recorded in none in County Recorder's Office.
 (book page, document number, etc.)

(Show reason for preparing this certificate, the evidence and detailed procedures used in establishing the corner positions and monumentation found or placed.)

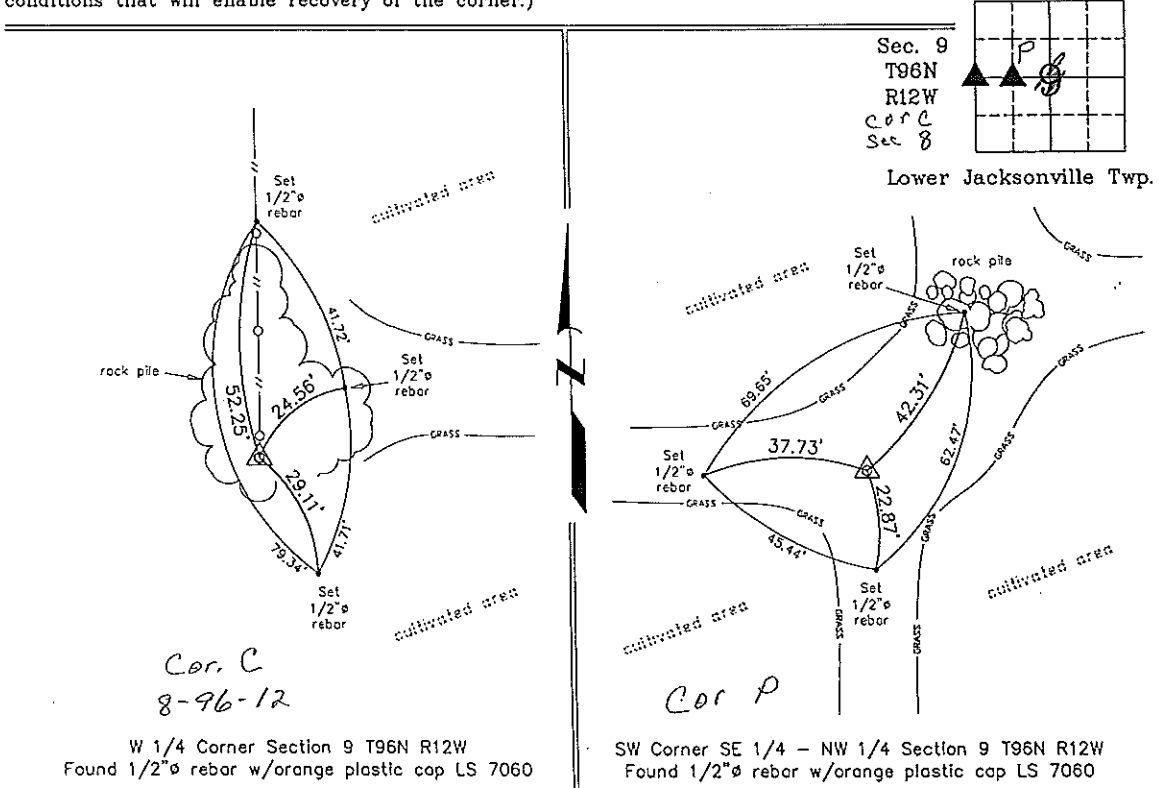
Monument Description and Remarks: W 1/4 CORNER SECTION 9 T96N R12W: Found 1/2"Ø rebar w/orange plastic cap LS 7060.

SW CORNER SE 1/4 - NW 1/4 SECTION 9 T96N R12W: Found 1/2"Ø rebar w/orange plastic cap LS 7060.

NOTE: Both Corners were found using information obtained from a Survey and Plat made by Lyle G. TeKippe recorded in the Chickasaw County Recorder's Office April 19, 1988 in Book 140, Pages 330-331.

PLAN - VIEW

(Show a minimum of three reference ties to durable physical objects, relevant monuments and physical conditions that will enable recovery of the corner.)



I hereby certify that this land surveying document was prepared and the related survey work was performed by me or under my direct personal supervision and that I am a duly licensed Land Surveyor under the laws of the State of Iowa.

Michael J. Shimak April 21, 2006
 Michael J. Shimak Date
 License number 16961
 My license renewal date is December 31, 2007.
 Sheets covered by this seal: Individual

List Corners to be Indexed			
Corners	Section	Twp.	Range
W 1/4	9	96N	12W
SW-SE-NW	9	96N	12W

Project Number 06116.LS
 FB. 46M PG. 3-7
 X:\Section Corners\Sec. 09\9-96-12.kldwg