

TeKIPPE ENGINEERING, P.C., 128 South Vine Street, West Union, Iowa 52175 Phone (563) 422-5131

UNITED STATES PUBLIC LAND SURVEY CORNER CERTIFICATE

OF

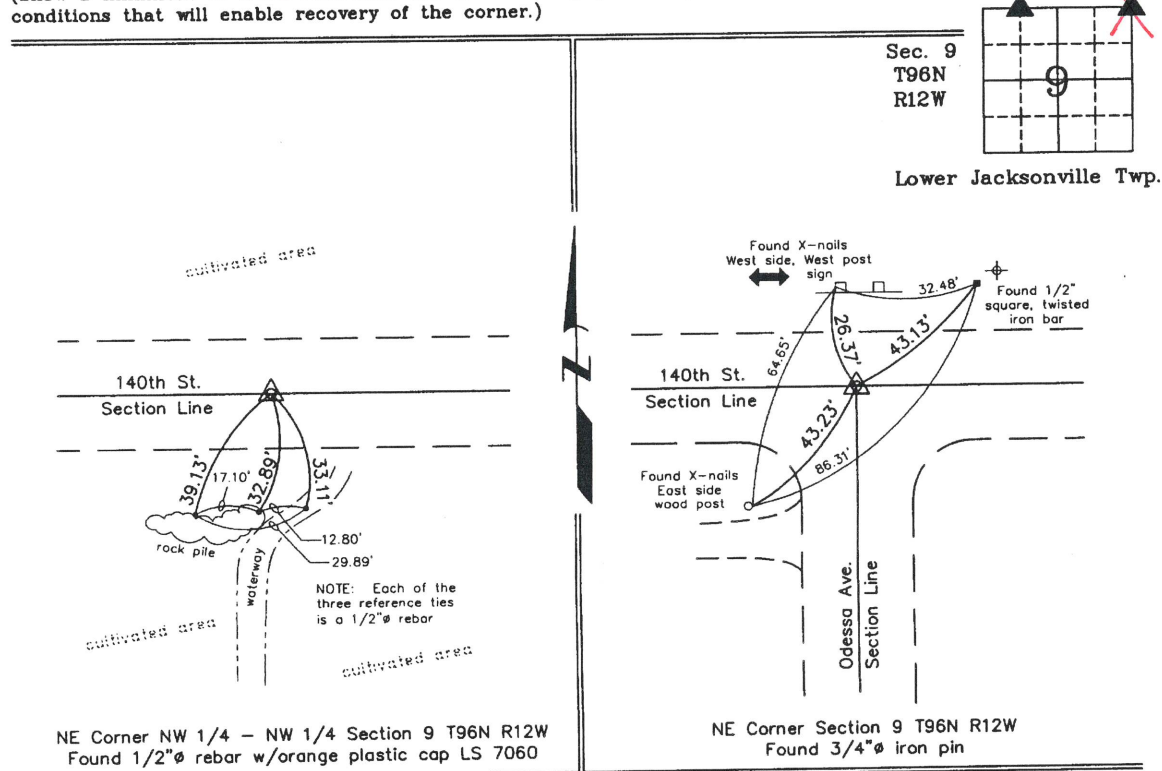
Land Survey Monuments situated in Section 9, Township 96 North, Range 12 West of the Fifth Principal Meridian, CHICKASAW County, Iowa. Previously recorded in (1) none (2) Book 147, Page 473 in County Recorder's Office. (book, page, document number, etc.)

(Show reason for preparing this certificate, the evidence and detailed procedures used in establishing the corner positions and monumentation found or placed.)

Monument Description and Remarks: (1) NE CORNER NW 1/4 - NW 1/4 SECTION 9 T96N R12W: Found 1/2"Ø rebar w/orange plastic cap LS 7060 using information obtained from a Survey and Plat made by Lyle G. TeKippe recorded in the Chickasaw County Recorder's Office April 19, 1988 in Book 140, Pages 330-331. (2) NE CORNER SECTION 9 T96N R12W: Found 3/4"Ø iron pin using information obtained from the previous Section Corner Certificate recorded in the Chickasaw County Recorder's Office August 30, 1991 in Book 147, Page 473. The SE reference tie was missing. Added one reference tie.

PLAN - VIEW

(Show a minimum of three reference ties to durable physical objects, relevant monuments and physical conditions that will enable recovery of the corner.)



NE Corner NW 1/4 - NW 1/4 Section 9 T96N R12W  
 Found 1/2"Ø rebar w/orange plastic cap LS 7060

NE Corner Section 9 T96N R12W  
 Found 3/4"Ø iron pin



I hereby certify that this land surveying document was prepared and the related survey work was performed by me or under my direct personal supervision and that I am a duly licensed Land Surveyor under the laws of the State of Iowa.

*Michael J. Shimak* April 21, 2006  
 Michael J. Shimak Date  
 License number 16961  
 My license renewal date is December 31, 2007.  
 Sheets covered by this seal: Individual

List Corners to be Indexed			
Corners	Section	Twp.	Range
NE-NW-NW	9	96N	12W
NE	9	96N	12W

Project Number 08115.LS  
 FB. 46M PG. 3-7

X:\Section Corners\Sec. 09\9-96-12be.dwg