

Herold - Reicks Surveying, 25 1/2 East Main Street, Suite 204, New Hampton, IA 50659, Ph. 641-394-2725

UNITED STATES PUBLIC LAND SURVEY CORNER CERTIFICATE

Land Survey Monuments situated in:
 Section 20, Township 97 North, Range 12 West of the Fifth Principal Meridian,
Chickasaw County, Iowa. Previously recorded in N/A
 in County Recorder's Office. (book, page, document number, etc.)

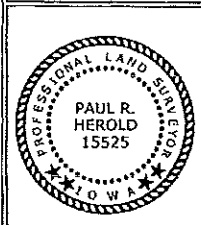
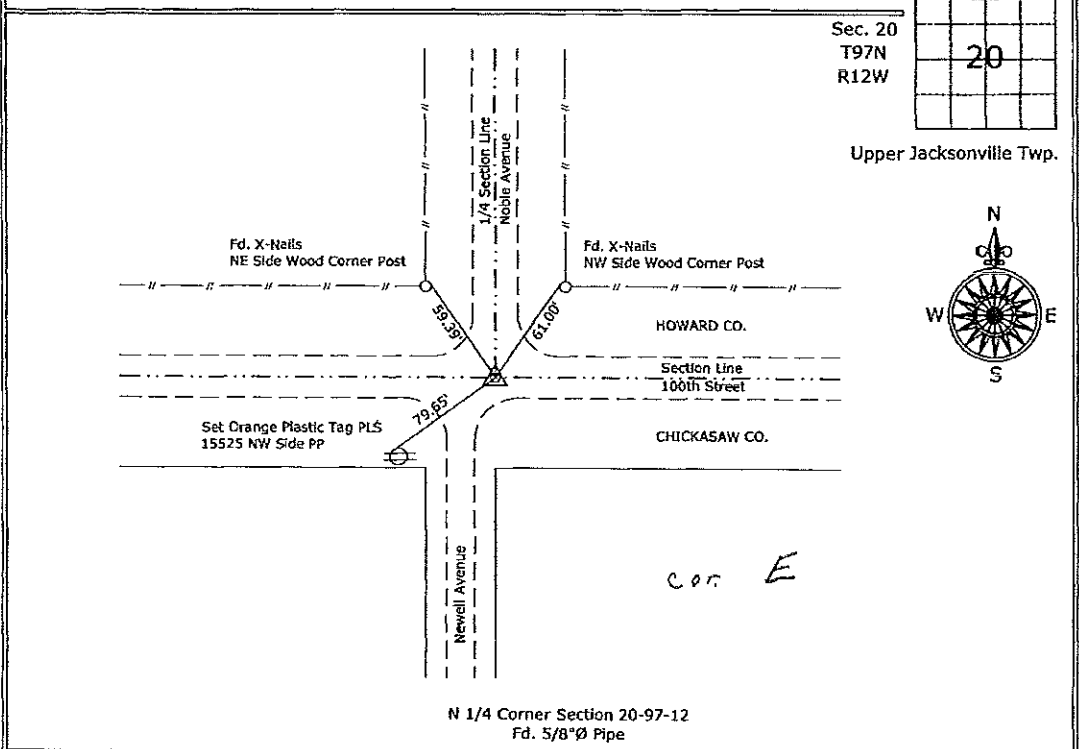
(Show reason for preparing this certificate, the evidence and detailed procedures used in establishing the corner positions and monumentation found or placed.)

Monument Description and Remarks:

N 1/4 Corner Section 20-97-12: Fd. 5/8"Ø Pipe from information obtained from a Survey and Plat made by L.P. Erdman, recorded January 25, 1985 in Book 133, Page 497 on file at the Chickasaw County Recorder's office.

PLAN - VIEW

(Show a minimum of three reference ties to durable physical objects, relevant monuments and physical conditions that will enable recovery of the corner.)



I hereby certify that this land surveying document was prepared and the related survey work was performed by me or under my direct personal supervision and that I am a duly licensed Land Surveyor under the laws of the State of Iowa.

Paul R. Herold 8-3-07
 Paul R. Herold Date:
 License number 15525
 My license renewal date is December 31, 2008.
 Sheets covered by this seal: Individual sheet only

List Corners to be Indexed			
Corners	Section	Twp.	Range
N 1/4	20	97	12
Project Number: 2007-080			
FB: Chickasaw County 1, Pgs. 32-33			