

Herold - Reicks Surveying, 10 East Main Street, New Hampton, IA 50658, Ph. 641-394-2725, Fax. 641-394-2718

UNITED STATES PUBLIC LAND SURVEY CORNER CERTIFICATE

Land Survey Monuments situated in Section 21, Township 97 North, Range 12 West of the Fifth Principal Meridian, Chickasaw County, Iowa. Previously recorded in 1.) Bk. 167, Pg. 171, 2.) Bk. 167, Pg. 172 in the County Recorder's office.

This certificate is being prepared in compliance with Iowa Code Chapter 355.11 because:

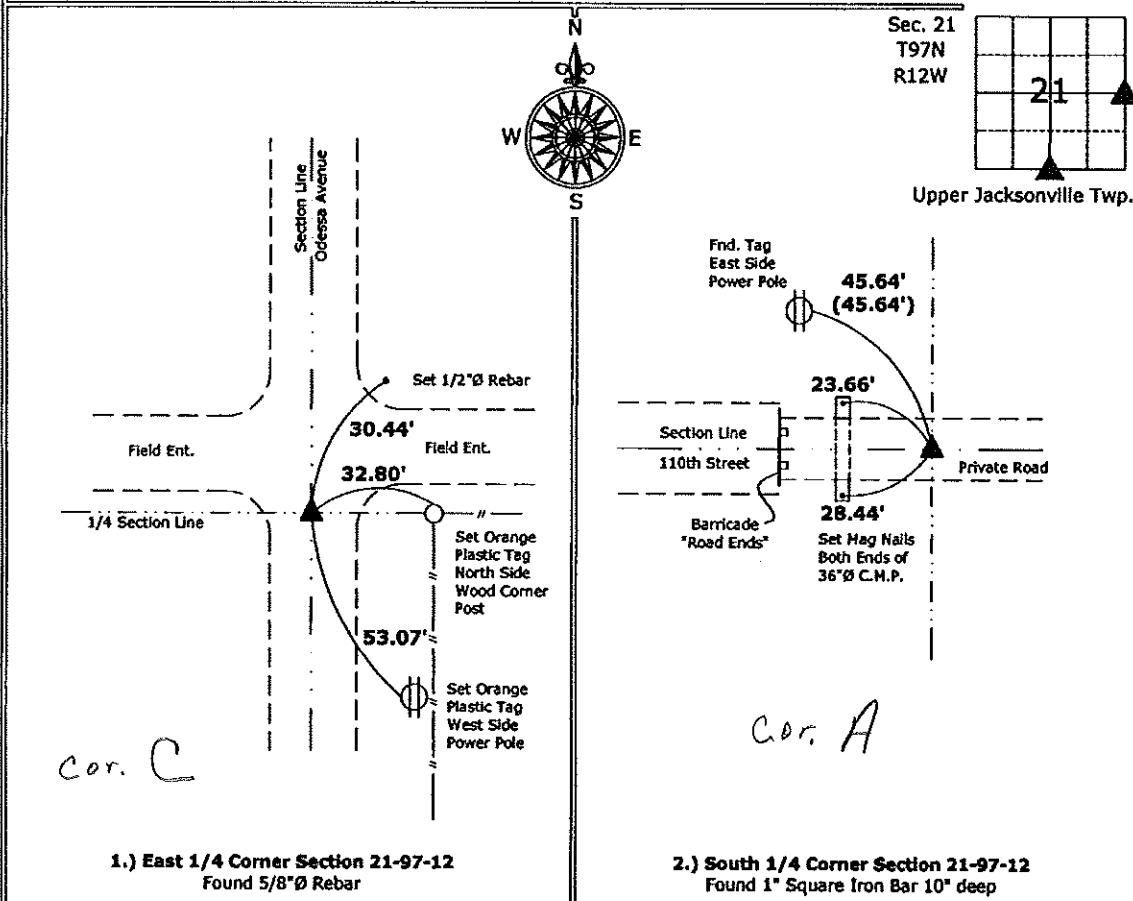
- There is no certificate on file for this corner.
- There are no longer three valid ties of record.
- 1. & 2. There are changes to reference ties of record.
- There is change of monumentation of record.
- To clarify description of record monument (ties).

Monument Description and Remarks:

- 1.) **East 1/4 Corner:** Found 5/8"Ø rebar from information obtained from previous Section Corner Certificate, the previous survey cap was missing and none of the previous ties exist.
- 2.) **South 1/4 Corner:** Found 1" square iron bar 10" deep from information obtained from previous Section Corner Certificate, the barricade shown on the previous certificate was removed and a new one constructed, added new ties to update the corner.

PLAN - VIEW

(Show a minimum of three reference ties to durable physical objects, relevant monuments and physical conditions that will enable recovery of the corner.)



I hereby certify that this land surveying document was prepared and the related survey work was performed by me or under my direct personal supervision and that I am a duly licensed Land Surveyor under the laws of the State of Iowa.

Paul R. Herold 2-8-10
 Paul R. Herold Date:
 License number 15255
 My license renewal date is December 31, 2010.
 Sheets covered by this seal: Individual sheet only

List Corners to be Indexed			
Corners	Section	Twp.	Range
E 1/4	21	97	12
S 1/4	21	97	12

Project Number: 2010-004
 FB: Chickasaw County 1, Pgs. 30-31

File: S:_Projects\2010-004-SCC\dwg\2010-004-SCC.dwg, 2/4/2010 05:00:52

UNITED STATES PUBLIC LAND SURVEY CORNER CERTIFICATE

OF

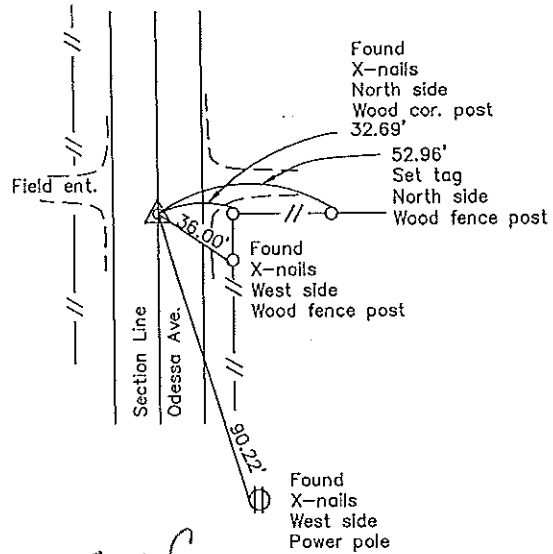
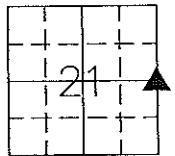
Land Survey Monuments situated in Section 21, Township 97 North, Range 12 West, of the Fifth Principal Meridian, CHICKASAW County, Iowa. Previously recorded in none in County Recorder's Office.
(book, page, document number, etc.)

(Show reason for preparing this certificate, the evidence and detailed procedures used in establishing the corner positions and monumentation found or placed.)

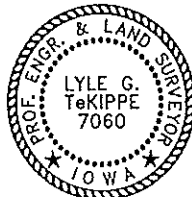
Monument Description and Remarks: E 1/4 Corner Section 21 T97N R12W: Found 5/8"Ø rebar w/yellow plastic cap H.R. GREEN 7549, from information obtained from the Chickasaw County Engineer's Office.

PLAN - VIEW

(Show a minimum of three reference ties to durable physical objects, relevant monuments and physical conditions that will enable recovery of the corner.)



E 1/4 Corner Section 21 T97N R12W



I hereby certify that this land surveying document was prepared and the related survey work was performed by me or under my direct personal supervision and that I am a duly licensed Land Surveyor under the laws of the State of Iowa.

Lyle G. TeKippe 4-7-98
Lyle G. TeKippe Date
License number 7060
My license renewal date is December 31, 1998.
Sheets covered by this seal: Individual

List Corners to be Indexed			
Corners	Section	Twp.	Range
E 1/4	21	97N	12W
Corner C	21-97-12		

Placed in tie book 4/9/98