

Herold - Reicks Surveying, 19 East Main Street, New Hampton, IA 50659, Ph. 641-394-2725, Fax. 641-394-2710

UNITED STATES PUBLIC LAND SURVEY CORNER CERTIFICATE

Land Survey Monuments situated in Section 21, Township 97 North, Range 12 West of the Fifth Principal Meridian, Chickasaw County, Iowa. Not previously recorded in the County Recorder's office.

This certificate is being prepared in compliance with Iowa Code Chapter 355.11 because:

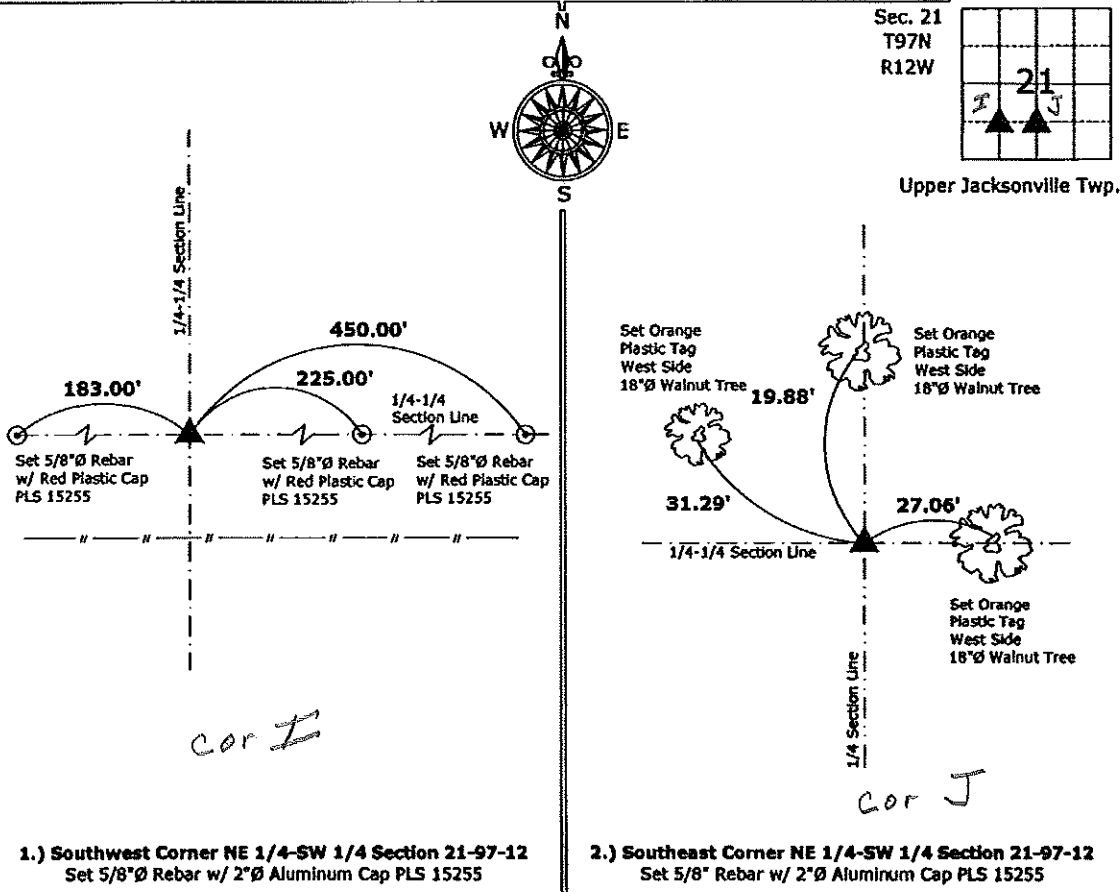
1. & 2. There is no certificate on file for this corner.
 There are no longer three valid ties of record.
 There are changes to reference ties of record.
 There is change of monumentation of record.
 To clarify description of record monument (ties).

Monument Description and Remarks:

- 1.) Southwest Corner NE 1/4-SW 1/4: Set 5/8"Ø rebar with 2"Ø aluminum Cap PLS 15255 at the intersection of the Quarter-Quarter Section lines.
 2.) Southeast Corner NE 1/4-SW 1/4: Set 5/8"Ø rebar with 2"Ø aluminum Cap PLS 15255 equidistant and online between the Center and the South 1/4 Corners of the section.

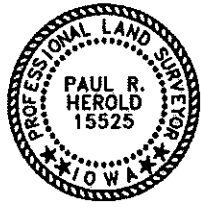
PLAN - VIEW

(Show a minimum of three reference ties to durable physical objects, relevant monuments and physical conditions that will enable recovery of the corner.)



1.) Southwest Corner NE 1/4-SW 1/4 Section 21-97-12
 Set 5/8"Ø Rebar w/ 2"Ø Aluminum Cap PLS 15255

2.) Southeast Corner NE 1/4-SW 1/4 Section 21-97-12
 Set 5/8" Rebar w/ 2"Ø Aluminum Cap PLS 15255



I hereby certify that this land surveying document was prepared and the related survey work was performed by me or under my direct personal supervision and that I am a duly licensed Land Surveyor under the laws of the State of Iowa.
Paul R. Herold 2-8-10
 Paul R. Herold Date:
 License number 15255
 My license renewal date is December 31, 2010.
 Sheets covered by this seal: Individual sheet only

List Corners to be Indexed			
Corners	Section	Twp.	Range
SW NE SW	21	97	12
SE NE SW	21	97	12

Project Number: 2010-004
 FB: Chickasaw County 1, Pgs. 30-31

File: S:\Projects\2010\2010-004-SCC\img\2010-004-SCC.dwg, 2/4/2010 05:00:27