



Prepared by: Kyle A. Johnson Address: 1900 MEDICAL ARTS AVE S, SUITE 100 SARTELL, MN Phone: 1-888-937-5150

UNITED STATES PUBLIC LAND SURVEY CORNER CERTIFICATE FOR

Land survey monuments situated in Section 21, Township 97 NORTH  
12 WEST, of the Fifth Principal Meridian, CHICKASAW County, Iowa.  
 Previously Recorded in \_\_\_\_\_ in County Recorder's Office.

(Show reason for preparing this certificate, the evidence and detailed procedures used in establishing the corner positions and monumentation found or placed.)

MONUMENT DESCRIPTION AND REMARKS:

**THIS DOCUMENT IS INTENDED TO REPLACE INSTRUMENT #2022-1890 AS THERE WAS AN ERROR IN THE CORNER IDENTIFICATION.**

**NORTHWEST CORNER:** Westwood Professional Services found a 5/8" rebar 1' deep and 2 ties per engineers tie book. Accepting corner location and set 1 tie. Filing corner record as there are no longer 3 valid ties of record.

**NORTHEAST CORNER:** Westwood Professional Services found a 5/8" rebar 0.8' deep and 3 ties per engineers tie sheet. Accepting corner location. Filing corner record as there is no certificate on file for this corner.

**WEST QUARTER CORNER:** Westwood Professional Services found a 5/8" rebar with aluminum cap LS15525 and 1 tie per 2010 corner record. Monument agrees with previous records. Accepting corner location and set 2 ties. Filing corner record as there are no longer 3 valid ties of record.

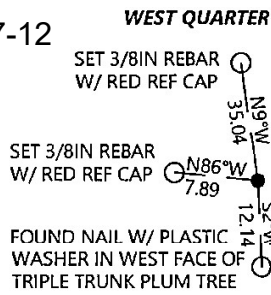
**CENTER QUARTER CORNER:** Westwood Professional Services found a 5/8" rebar with aluminum cap LS15525 but no ties. Distances to adjacent corners agree with previous records. Accepting corner location. Filing corner record as there are no longer 3 valid ties of record.

**NORTH QUARTER:** Westwood Professional Services searched the area but did not find a monument. The 1998 and 2010 survey's agree closely with each other. The 2013, 2014 and 2018 also agree closely with each other. The 1998 and 2010 survey's measure +/- 1 foot long from the NW corner of Section 21 and +/- 1 foot short from the NE corner of Section 21 when comparing against the 2013, 2014 and 2018 surveys. Found 2, 5/8" rebar's north of road per 2018 Erdman survey that shown shown to be set on the Right of Way. The westerly monument measures +/- 0.5' long from the property on the section line. Set 1/2" rebar with orange cap LS25725 per 2013 and 2014 Reicks surveys and set 3 ties. Filing corner record as there is no certificate on file for this corner.

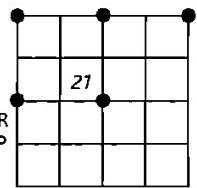
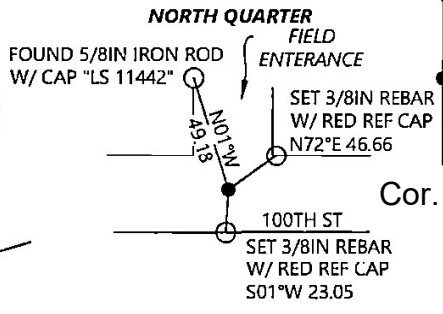
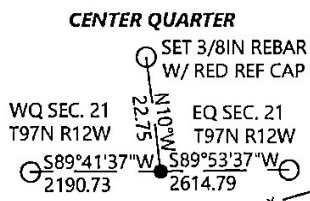
PLAN - VIEW

(Show a minimum of three reference ties to durable physical objects, relevant monuments and physical conditions that will enable recovery of the corner.)

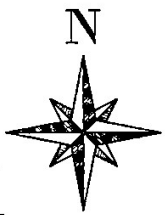
Cor. C  
Sec. 20-97-12



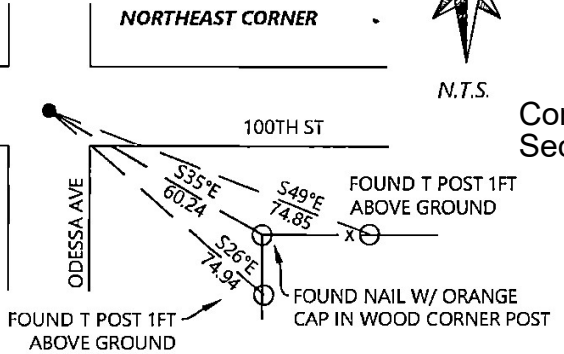
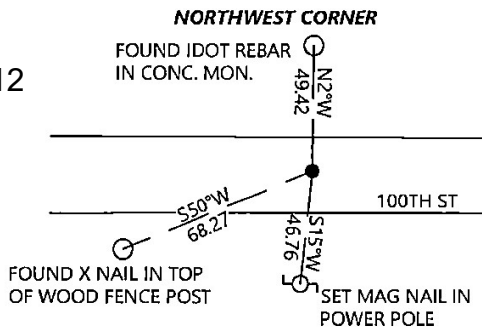
Cor. O  
21-97-12



Cor. A Sec. 16-97-12



Cor. B  
Sec. 17-97-12



Cor. B  
Sec. 16-97-12



I hereby certify that this land surveying document was prepared and the related survey work was performed by me or under my direct personal supervision and that I am a duly licensed Land Surveyor under the laws of the state of Iowa.

Signature: Kyle Johnson Date: 01/03/2023  
 Typed/Printed Name: Kyle A. Johnson  
 License Number: 25725  
 My license renewal date is December 31, 2024  
 Pages or sheets covered by this seal: THIS SHEET

Corners to be Indexed

Corners	Section	Twp.	Range
NE	21	97	12
NW	21	97	12
WQ	21	97	12
CQ	21	97	12
NQ	21	97	12