

Prepared by & Return to: Harold - Reicks Surveying, 18 East Main Street, New Hampton, IA 50658, Ph. 641-394-2725

UNITED STATES PUBLIC LAND SURVEY CORNER CERTIFICATE

Land Survey Monuments situated in Section 23, Township 97 North, Range 12 West of the Fifth Principal Meridian, Chickasaw County, Iowa. Previously not recorded in the County Recorder's office.

This certificate is being prepared in compliance with Iowa Code Chapter 355.11 because:



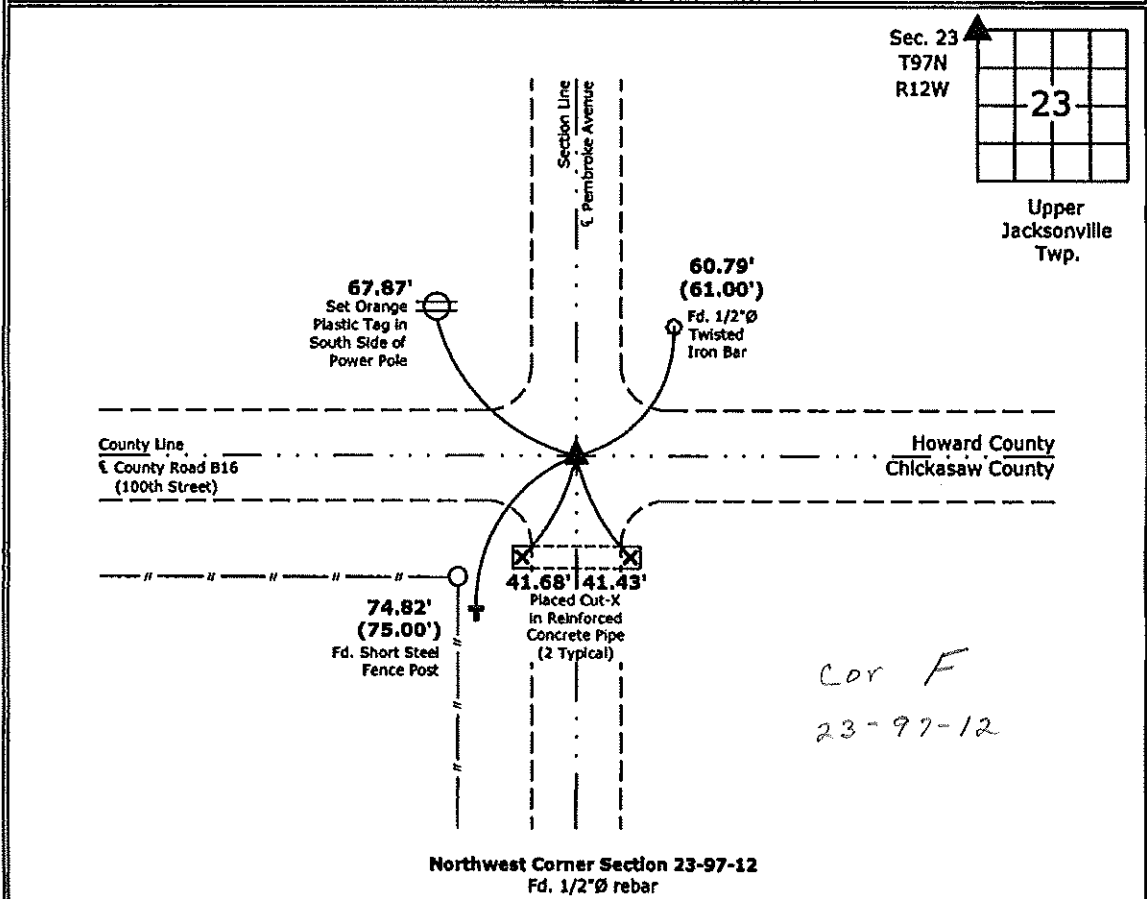
- There is no certificate on file for this corner.
- There are no longer three valid ties of record.
- There are changes to reference ties of record.
- There is change of monumentation of record.
- To clarify description of record monument (ties).

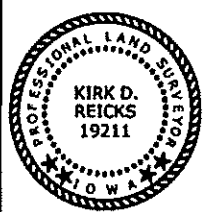
Monument Description and Remarks:

Northwest Corner: Fd. 1/2"Ø rebar with information obtained from the previous Section Corner Certificate recorded in Book D, Page 65, on file in the Howard County Recorder's office, Cresco, Iowa. Set new ties to update corner.

PLAN - VIEW

(Show a minimum of three reference ties to durable physical objects, relevant monuments and physical conditions that will enable recovery of the corner.)



	I hereby certify that this land surveying document was prepared and the related survey work was performed by me or under my direct personal supervision and that I am a duly licensed Land Surveyor under the laws of the State of Iowa. <i>Kirk D. Reicks</i> 12-6-12 Kirk D. Reicks Date:	List Corners to be Indexed		
	License number 19211 My license renewal date is December 31, 2012. Sheets covered by this seal: Individual sheet only	Corners	Section	Twp.
	NW	23	97	12
		Project Number: 2012-208		
		FB: Chickasaw County 5, Pg. 3		