

Prepared by & Return to: Herold - Reicks Surveying, 10 East Main Street, New Hampton, IA 50658, Ph. 641-394-8725

UNITED STATES PUBLIC LAND SURVEY CORNER CERTIFICATE

Land Survey Monuments situated in Section 23, Township 97 North, Range 12 West of the Fifth Principal Meridian, Chickasaw County, Iowa. 1., 2.) Not previously recorded in the County Recorder's office.

This certificate is being prepared in compliance with Iowa Code Chapter 355.11 because:

- 1 & 2 There is no certificate on file for this corner.
 There are no longer three valid ties of record.
 There are changes to reference ties of record.
 There is change of monumentation of record.
 To clarify description of record monument (ties).

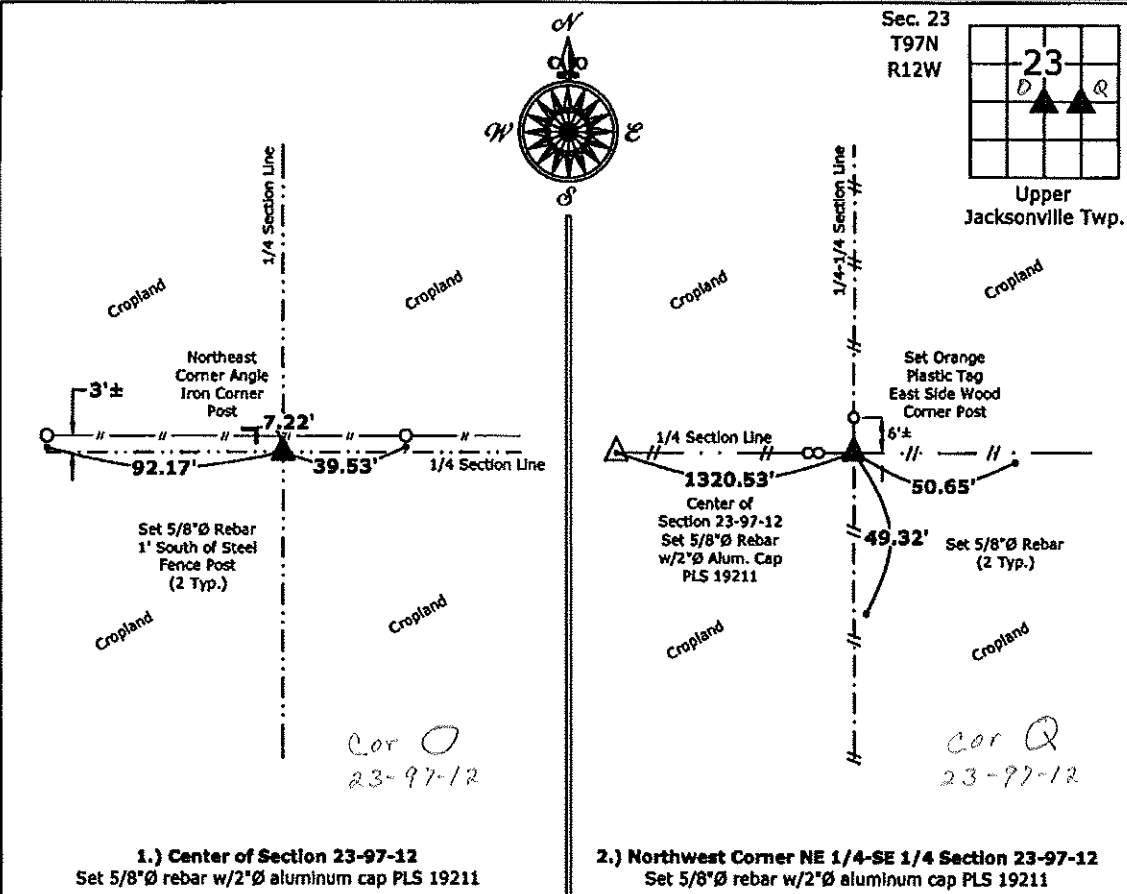
Monument Description and Remarks:

1.) **Center of Section:** Set 5/8"Ø rebar with 2"Ø aluminum cap PLS 19211 at the intersection of Quarter Section lines, there are no records of the perpetuation of a monument at this Corner.

2.) **Northwest Corner NE 1/4-SE 1/4:** Set 5/8"Ø rebar with 2"Ø aluminum cap PLS 19211 equidistant and online between the East 1/4 Corner and Center of Section 23.

PLAN - VIEW

(Show a minimum of three reference ties to durable physical objects, relevant monuments and physical conditions that will enable recovery of the corner.)



1.) **Center of Section 23-97-12**
 Set 5/8"Ø rebar w/2"Ø aluminum cap PLS 19211

2.) **Northwest Corner NE 1/4-SE 1/4 Section 23-97-12**
 Set 5/8"Ø rebar w/2"Ø aluminum cap PLS 19211



I hereby certify that this land surveying document was prepared and the related survey work was performed by me or under my direct personal supervision and that I am a duly licensed Land Surveyor under the laws of the State of Iowa.

Kirk D. Reicks 3-17-13
 Kirk D. Reicks Date:

License number 19211
 My license renewal date is December 31, 2014.
 Sheets covered by this seal: Individual sheet only

List Corners to be Indexed			
Corners	Section	Twp.	Range
CTR	23	97	12
NW-NE-SE	23	97	12

Project Number: 2013-047
 FB: Chickasaw 5, Pgs. 34-37