

Herold - Reicks Surveying, 25 1/2 East Main Street, Suite 204, New Hampton, IA 50658, Ph. 641-394-2725

UNITED STATES PUBLIC LAND SURVEY CORNER CERTIFICATE

Land Survey Monuments situated in Section **23**, Township **97 North**, Range **12 West** of the Fifth Principal Meridian, **Chickasaw County**, Iowa. Previously not recorded in the **Chickasaw County Recorder's** office.

This certificate is being prepared in compliance with Iowa Code Chapter 355.11 because:

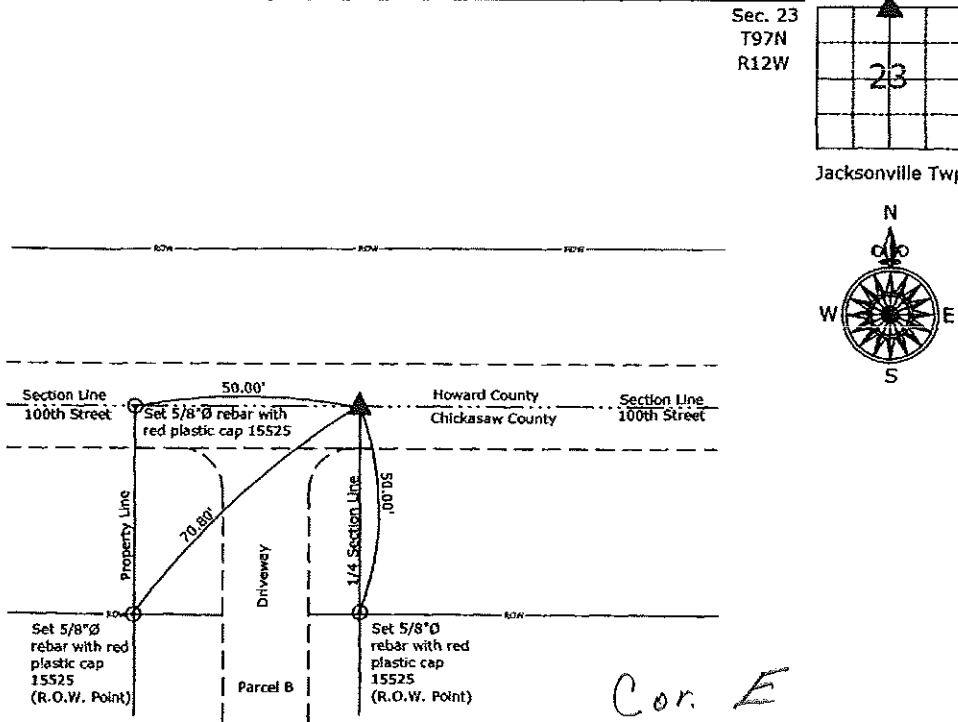
- There is no certificate on file for this corner.
- There are no longer three valid ties of record.
- There are changes to reference ties of record.
- There is change of monumentation of record.
- To clarify description of record monument (ties).

Monument Description and Remarks:

N 1/4 Corner - The Chickasaw County Engineer's office shows no perpetuation of this corner. The Howard County Engineer's office records indicated an iron pin set in the 1930's with short ties which have been obviously graded out. Searched 40' area with metal locator and found nothing. Set 5/8"Ø rebar w/2"Ø aluminum cap PLS 15525 by doubling the distance from the NW corner to a position at the NW corner of the NE 1/4-NW 1/4 at the centerline of 100th Street.

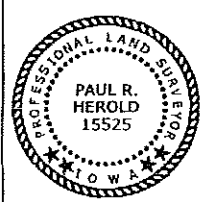
PLAN - VIEW

(Show a minimum of three reference ties to durable physical objects, relevant monuments and physical conditions that will enable recovery of the corner.)



Cor. E
 14-97-12

N 1/4 Corner Section 23-97-12
 Set 5/8"Ø rebar w/2"Ø aluminum cap PLS 15525



I hereby certify that this land surveying document was prepared and the related survey work was performed by me or under my direct personal supervision and that I am a duly licensed Land Surveyor under the laws of the State of Iowa.

Paul R. Herold 11-12-08
 Paul R. Herold Date:
 License number 15525
 My license renewal date is December 31, 2008.
 Sheets covered by this seal: Individual sheet only

List Corners to be Indexed			
Corners	Section	Twp.	Range
N 1/4	23	97	12
Project Number: 2008-128			
FB: Chickasaw County 3, Pg. 12			

File: S:\Projects\2008\2008-128.dwg, 11/12/2008 11:55:05 PM