

Prepared by & Return to: Harold - Reicks Surveying, 10 East Main Street, New Hampton, IA 50659, Ph. 641-394-2725

UNITED STATES PUBLIC LAND SURVEY CORNER CERTIFICATE

Land Survey Monuments situated in Section 24, Township 97 North, Range 12 West of the Fifth Principal Meridian, Chickasaw County, Iowa. 1.) Not previously recorded in the County Recorder's office.
 2.) Previously recorded in Document #2003-1295 in the County Recorder's office.

This certificate is being prepared in compliance with Iowa Code Chapter 355.11 because:

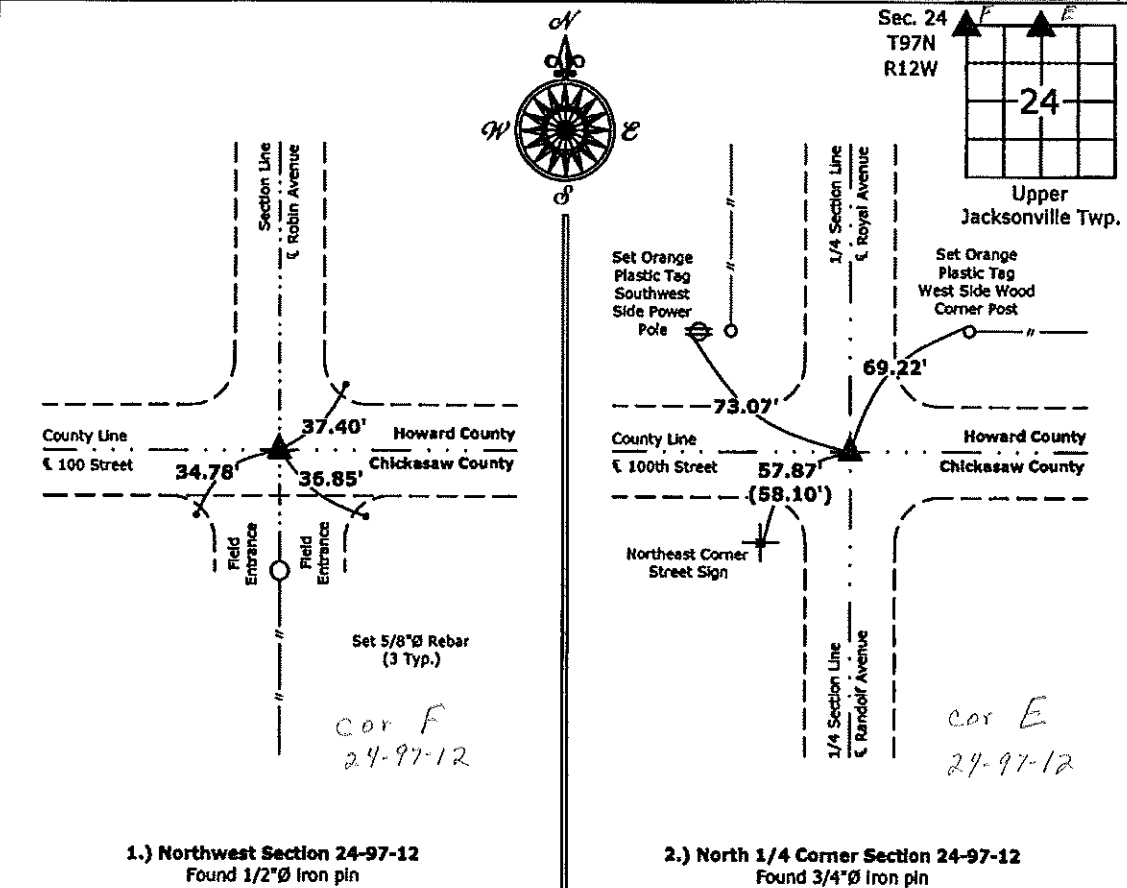
- 1 There is no certificate on file for this corner.
- 2 There are no longer three valid ties of record.
- 2 There are changes to reference ties of record.
- There is change of monumentation of record.
- To clarify description of record monument (ties).

Monument Description and Remarks:

- 1.) Northwest Corner: Found 1/2"Ø Iron pin with information obtained from County Engineer's Office.
- 2.) North 1/4 Corner: Found 3/4"Ø Iron pin with information obtained from the previous Section Corner Certificate, two ties were missing, set new ties to update the corner.

PLAN - VIEW

(Show a minimum of three reference ties to durable physical objects, relevant monuments and physical conditions that will enable recovery of the corner.)



I hereby certify that this land surveying document was prepared and the related survey work was performed by me or under my direct personal supervision and that I am a duly licensed Land Surveyor under the laws of the State of Iowa.
Kirk D. Reicks 3-14-13
 Kirk D. Reicks Date:
 License number 19211
 My license renewal date is December 31, 2014.
 Sheets covered by this seal: Individual sheet only

List Corners to be Indexed			
Corners	Section	Twp.	Range
NW	24	97	12
N 1/4	24	97	12

Project Number: 2013-047
 FB: Chickasaw 5, Pgs. 34-37

File: S:_C30 Projects\2013-047\2013-047.dwg, 3/14/2013 11:24:17 AM

2003 APR 25 AM 8:31

CINDY MESSERSMITH
 CHICKASAW CO. RECORDER

TeKIPPE ENGINEERING, P.C., 128 South Vine Street, West Union, Iowa 52176 Phone (563) 422-5131

**CORRECTIVE
 UNITED STATES PUBLIC LAND SURVEY CORNER CERTIFICATE**

OF
 Land Survey Monuments situated in Section 24, Township 97 North, Range 12 West of the Fifth Principal Meridian, CHICKASAW County, Iowa.
 Previously recorded in Book 158, Page 64 in County Recorder's Office.
 (book, page, document number, etc.)

(Show reason for preparing this certificate, the evidence and detailed procedures used in establishing the corner positions and monumentation found or placed.)

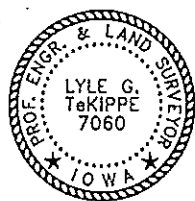
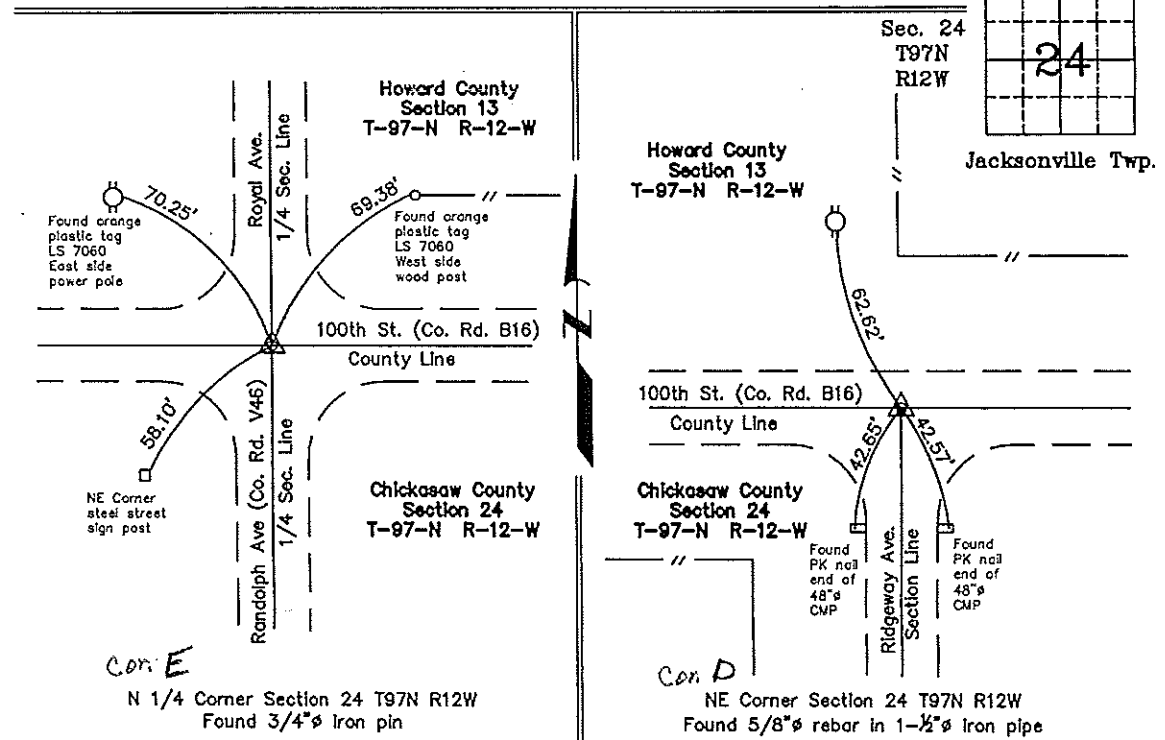
Monument Description and Remarks: N 1/4 Corner Section 24 T97N R12W: Found 3/4" ø iron pin.

NE Corner Section 24 T97N R12W: Found 5/8" ø rebar inside 1-1/2" ø iron pipe.

NOTE: This Section Corner Certificate corrects the name of the North/South street leading to the NE Corner Section 24-97-12.

PLAN - VIEW

(Show a minimum of three reference ties to durable physical objects, relevant monuments and physical conditions that will enable recovery of the corner.)



I hereby certify that this land surveying document was prepared and the related survey work was performed by me or under my direct personal supervision and that I am a duly licensed Land Surveyor under the laws of the State of Iowa.
Lyle G. TeKippe 4-21-03
 Lyle G. TeKippe Date
 License number 7060
 My license renewal date is December 31, 2004.
 Sheets covered by this seal: Individual

List Corners to be Indexed			
Corners	Section	Twp.	Range
N 1/4	24	97N	12W
NE	24	97N	12W

Entered 4-25-03
 X:\Section Corners\Sec. 24\24-97-12co.dwg

County Engineers
 Copies