

File 2003-0913
~~0909~~

Lampman & Associates Robert M. Lampman E750 Roberts Rd. De Soto, Wisconsin 54624 (608)648-2288

UNITED STATES PUBLIC LAND SURVEY CORNER CERTIFICATE OF

Land Survey Monuments situated in Section 24, Township 97 North, Range 12 West,
of the Fifth Principal Meridian, Chickasaw County, Iowa.

Previously recorded in no certificate on file in County Recorder's Office.
(book, page, document number., etc.)

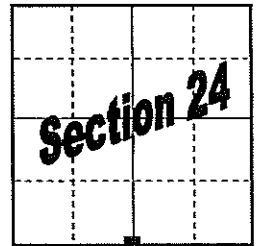
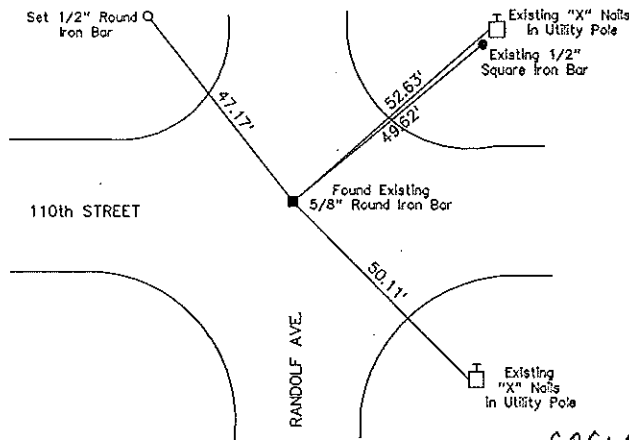
(Show reason for preparing this certificate, the evidence and detailed procedures used in establishing the corner positions and monumentation found or placed.)

Monument Description and Remarks:

Utilizing reference ties of record from the Chickasaw County Engineer's Office, found a 5/8" round iron bar at the corner location. Set additional reference tie in a Northwesterly direction to replace a reference monument that no longer existed.

PLAN VIEW

(Show a minimum of three reference ties to durable physical objects, relevant monuments and physical conditions that will enable recovery of the corner.)



Drawing not to scale.

cor. A

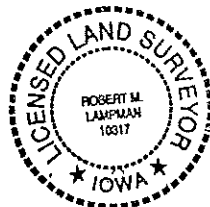
I hereby certify that the survey work was completed and this certificate was prepared by me or under my direct personal supervision and that I am a duly licensed land surveyor under the laws of the state of Iowa.

Signature: Robert M. Lampman
Robert M. Lampman

Date: 3-20-03 License No. 10317

My License Renewal Date Is:

12-31-04



SEAL

Corners	List Corners to Be Indexed		
	Section	Twp	Range
SQ COR	24	97 North	12 West

Filed 4-2-03