

Prepared by & Return to: Harold - Reicks Surveying, 10 East Main Street, New Hampton, IA 50659, Ph. 641-394-2725

UNITED STATES PUBLIC LAND SURVEY CORNER CERTIFICATE

Land Survey Monuments situated in Section 24, Township 97 North, Range 12 West of the Fifth Principal Meridian, Chickasaw County, Iowa. 1.) Not previously recorded in the County Recorder's office. 2.) Previously recorded in Doc. #2003-1207 in the County Recorder's office.

This certificate is being prepared in compliance with Iowa Code Chapter 355.11 because:



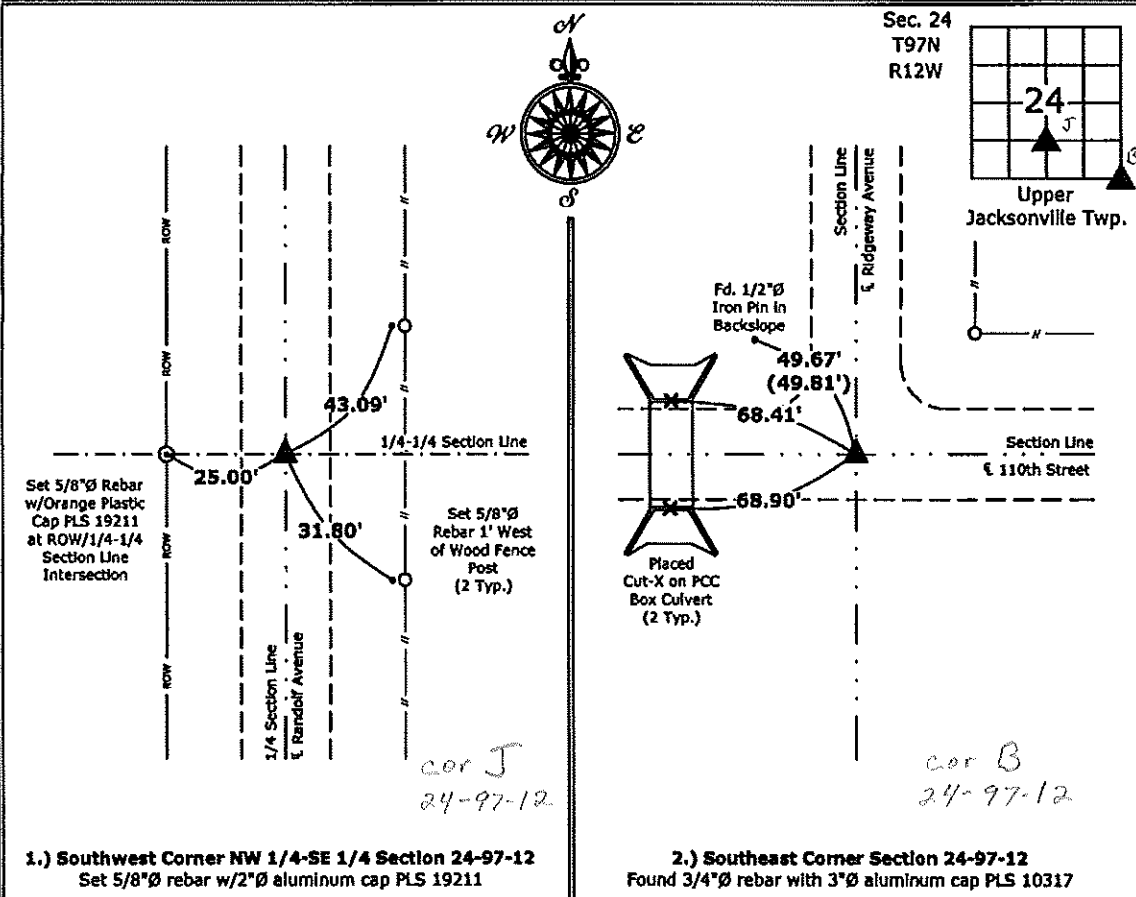
- 1 There is no certificate on file for this corner.
- 2 There are no longer three valid ties of record.
- There are changes to reference ties of record.
- There is change of monumentation of record.
- To clarify description of record monument (ties).

Monument Description and Remarks:

- 1.) **Southwest Corner NW 1/4-SE 1/4:** Set 5/8"Ø rebar with 2"Ø aluminum cap PLS 19211 equidistant and online between the South 1/4 Corner and Center of Section 24.
- 2.) **Southeast Corner:** Found 3/4"Ø rebar with 3"Ø aluminum cap PLS 10317 with information obtained from the previous Section Corner Certificate, two ties were missing, set new ties to update the corner.

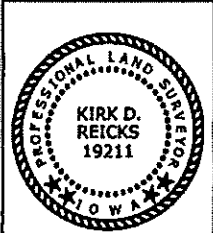
PLAN - VIEW

(Show a minimum of three reference ties to durable physical objects, relevant monuments and physical conditions that will enable recovery of the corner.)



1.) **Southwest Corner NW 1/4-SE 1/4 Section 24-97-12**
 Set 5/8"Ø rebar w/2"Ø aluminum cap PLS 19211

2.) **Southeast Corner Section 24-97-12**
 Found 3/4"Ø rebar with 3"Ø aluminum cap PLS 10317



I hereby certify that this land surveying document was prepared and the related survey work was performed by me or under my direct personal supervision and that I am a duly licensed Land Surveyor under the laws of the State of Iowa.
Kirk D. Reicks 3-14-12
 Kirk D. Reicks Date:
 License number 19211
 My license renewal date is December 31, 2014.
 Sheets covered by this seal: Individual sheet only

List Corners to be Indexed			
Corners	Section	Twp.	Range
SW-NW-SE	24	97	12
SE	24	97	12

Project Number: 2013-047
 FB: Chickasaw 5, Pgs. 34-37

File 2003-1207

Lampman & Associates Robert M. Lampman E750 Roberts Rd. De Soto, Wisconsin 54624 (608)648-2288

UNITED STATES PUBLIC LAND SURVEY CORNER CERTIFICATE

OF
Land Survey Monuments situated in Section 24, Township 97 North, Range 12 West,
of the Fifth Principal Meridian, Chickasaw County, Iowa.
Previously recorded in 2003-0912 in County Recorder's Office.
(book, page, document number, etc.)

(Show reason for preparing this certificate, the evidence and detailed procedures used in establishing the corner positions and monumentation found or placed.)

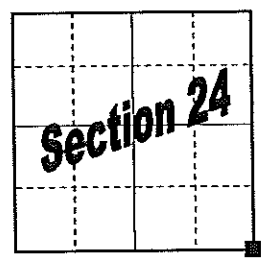
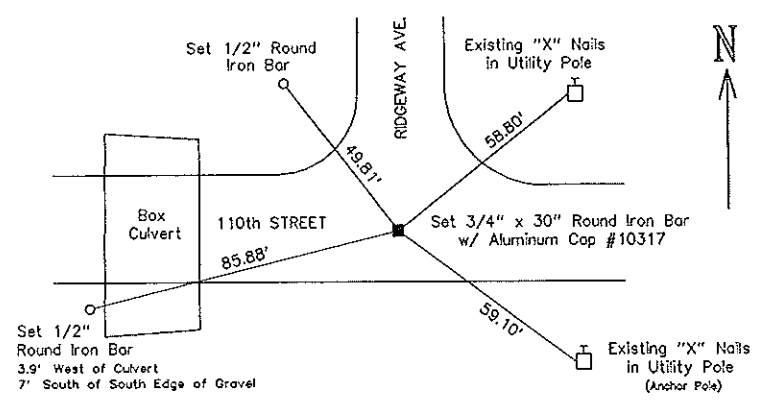
Monument Description and Remarks:

Reestablished the corner location from reference ties of record in the Chickasaw County Engineer's Office. (Ties utilized were "X" nails in utility poles as shown below.) Set 3/4" x 30" round iron bar at the corner location.

This certificate is being revised to note that an Aluminum Cap stamped with #10317 has been placed on the 3/4" x 30" iron bar set at the section corner.

PLAN VIEW

(Show a minimum of three reference ties to durable physical objects, relevant monuments and physical conditions that will enable recovery of the corner.)



Drawing not to scale.

cor. B

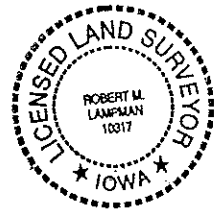
I hereby certify that the survey work was completed and this certificate was prepared by me or under my direct personal supervision and that I am a duly licensed land surveyor under the laws of the state of Iowa.

Signature: Robert M. Lampman
Robert M. Lampman

Date: April 17, 2003 License No. 10317

My License Renewal Date Is: 12-31-04

SEAL



Corners	List Corners to Be Indexed		
	Section	Twp	Range
SE COR	24	97 North	12 West