

Chickasaw Co. Recorder  
 Cindy Messersmith  
**Fee Book 2017-0792**  
 05/25/2017 @0230PM  
 SCC SEC COR CERT  
 Book: Page: # Pages: 1  
 Total Fees: \$7.00

Prepared by & Return to: Herold - Reicks Surveying, 10 East Main Street, New Hampton, IA 50659, Ph. 641-394-2725

### United States Public Land Survey Corner Certificate

27  
 Land Survey Monument situated in  
 Section **22**, Township **97** North, Range **12** West of the Fifth Principal Meridian, **Chickasaw** County, Iowa.  
 Not on file in the County Recorder's office.

This certificate is being prepared in compliance with Iowa Code Chapter 355.11 because:

- There is no certificate on file for this corner.
- There are no longer three valid ties of record.
- There are changes to reference ties of record.
- There is change of monumentation of record.
- To clarify description of record monument (ties).

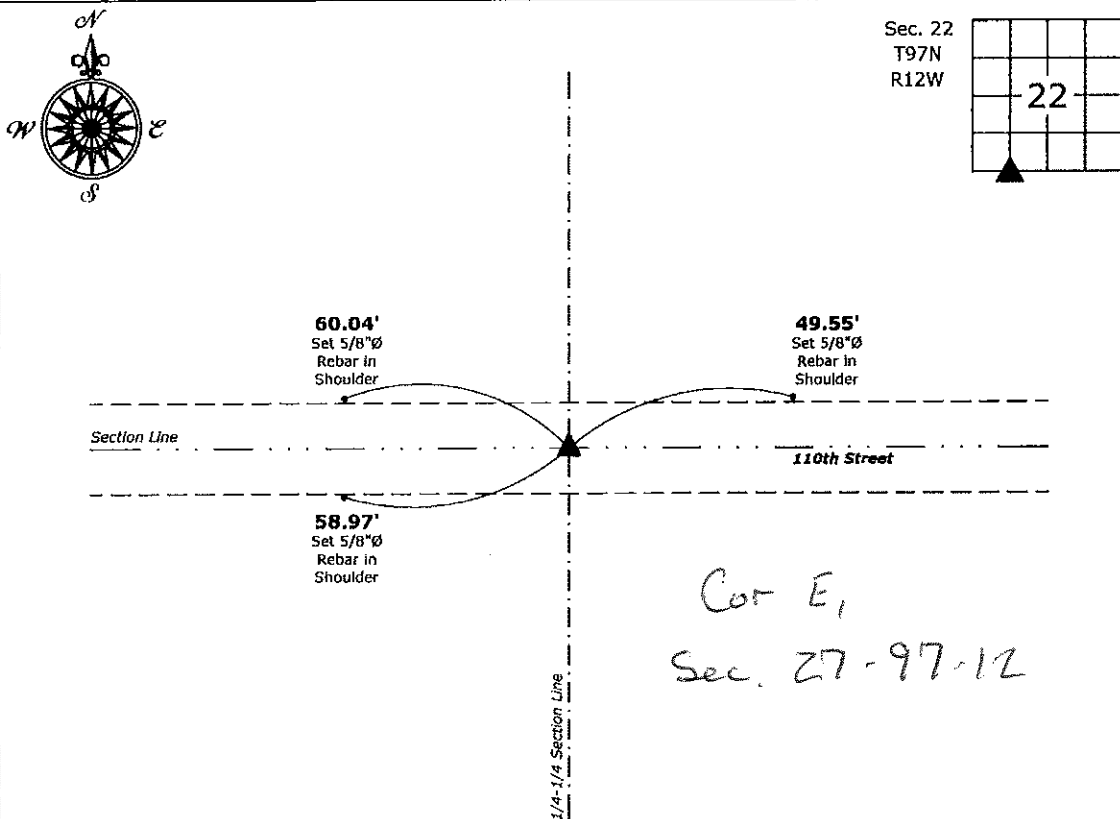
#### Monument Description and Remarks:

**Southeast Corner SW 1/4 - SW 1/4:** Set 5/8"Ø rebar w/2"Ø aluminum cap PLS 19211 equidistant and on line between the Southwest and South 1/4 Corners of said Section.

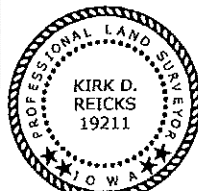
An extensive search of all of the records within the County offices was performed as part of the section corner recovery, No records were located of the perpetuation of a monument at this corner.

#### Plan View

(Show a minimum of three reference ties to durable physical objects, relevant monuments and physical conditions that will enable recovery of the corner.)



**Southeast Corner SW 1/4 - SW 1/4 of Section 22-97-12**  
 Set 5/8"Ø rebar w/2"Ø aluminum cap PLS 19211



I hereby certify that this land surveying document was prepared and the related survey work was performed by me or under my direct personal supervision and that I am a duly licensed Land Surveyor under the laws of the State of Iowa.  
*Kirk D. Reicks* 5-22-17  
 Kirk D. Reicks Date:  
 License number 19211  
 My license renewal date is December 31, 2018.  
 Sheets covered by this seal: Individual sheet only

List Corner to be Indexed			
Corner	Section	Twp.	Range
SE-SW-SW	22	97	12
Project Number: 2017-051			
FB: Chickasaw 7, Pgs. 9-10			

File: S:\\_C3D Projects\County Control Systems\CHICKASAW\CHICK-6\CHICK-6.dwg, 5/22/2017 8:58:31 AM